

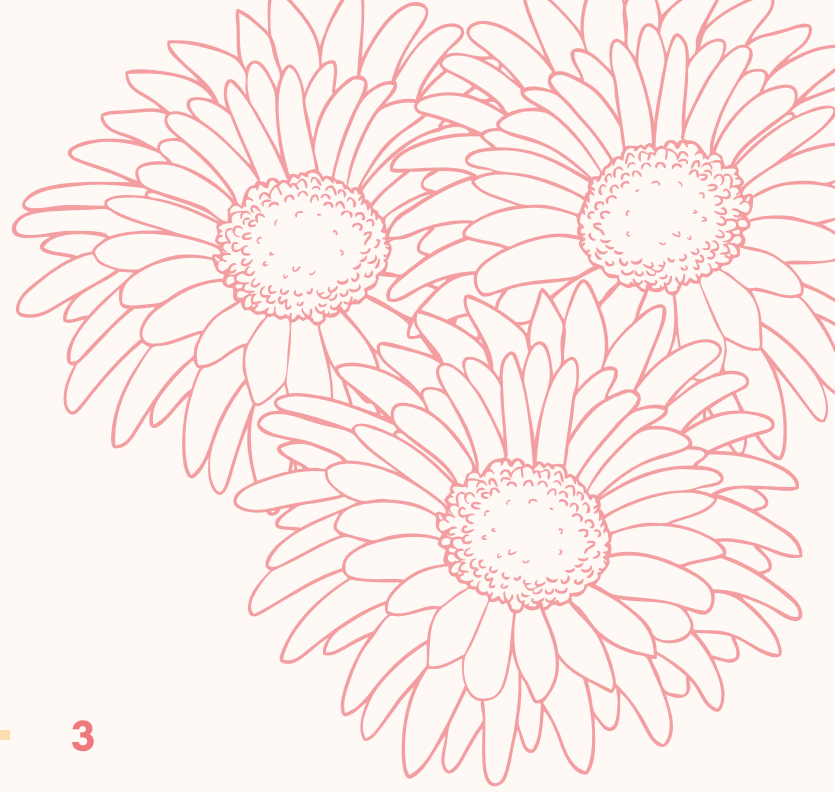


**2021**

**CRAWFORDSVILLE DISTRICT  
PUBLIC LIBRARY**

---

***Spring  
Activity  
Book***



# *Index*

|                           |           |
|---------------------------|-----------|
| <b>DOT TO DOT</b>         | <b>3</b>  |
| <b>VEGGIE CODEBREAKER</b> | <b>4</b>  |
| <b>CRYPTOGRAM</b>         | <b>5</b>  |
| <b>GARDEN SORT</b>        | <b>6</b>  |
| <b>FIND THE TOP</b>       | <b>7</b>  |
| <b>FOUR ACES</b>          | <b>9</b>  |
| <b>LOGIC PUZZLE</b>       | <b>11</b> |
| <b>MAZE</b>               | <b>12</b> |
| <b>REBUS</b>              | <b>13</b> |
| <b>SODOKU</b>             | <b>15</b> |
| <b>JIGSAW SODOKU</b>      | <b>17</b> |
| <b>CROSSWORD</b>          | <b>18</b> |
| <b>WORDSEARCH</b>         | <b>19</b> |
| <b>COLOR BY NUMBERS</b>   | <b>20</b> |
| <b>COLORING PAGES</b>     | <b>21</b> |





# CODEBREAKER (or CODEWORD, or CODE CRACKER) WORD PUZZLE

The number in each square corresponds to a letter. The same number represents the same letter.

Crack the code and fill the grid by determining which letter relates to which number.

To help you get started five word entries have picture clues, and four letters are already in place.

The crossword puzzle grid contains the following numbers in each square:

|    |    |    |    |    |    |    |    |    |    |    |    |    |    |    |    |    |    |
|----|----|----|----|----|----|----|----|----|----|----|----|----|----|----|----|----|----|
|    |    |    |    | 22 | 3  | 18 | 1  | 3  |    | 18 |    | 5  |    | 3  |    | 1  | C  |
|    |    |    |    | 4  | 12 | 5  | 7  | 2  | 1  | 11 | 1  | 11 | 14 | 19 | 3  | 2  | R  |
|    |    |    |    | 2  | 3  | 12 | 7  | 2  | 6  |    | 2  |    | 6  |    | 16 | 3  | E  |
|    |    |    |    | 8  |    | 5  |    | 2  |    | 4  | 8  | 11 | 6  | 3  | 18 | 8  | S  |
|    | 12 | 7  | 10 | 13 | 9  | 9  | 13 | 16 | 18 |    | 11 |    | 13 |    | 17 |    | S  |
| 7  |    | 4  |    | 1  |    | 7  |    | 8  | 16 | 2  | 2  | 3  | 18 | 8  |    | 16 |    |
| 10 | 11 | 1  | 1  | 15 | 13 | 18 | 13 |    | 8  |    | 13 |    | 12 | 2  | 13 | 18 | 6  |
| 11 |    | 16 |    | 16 |    | 8  |    | 19 | 3  | 7  | 18 | 4  |    | 3  |    | 13 |    |
| 2  | 3  | 8  | 7  | 20 | 3  |    |    |    |    |    | 12 | 13 | 2  | 7  | 4  | 16 | 9  |
| 3  |    | 4  |    | 3  | 9  | 22 |    |    |    |    | 2  |    | 8  |    | 18 |    |    |
|    | 4  |    | 7  |    | 3  |    |    |    |    |    | 19 | 11 | 4  |    | 12 |    | 15 |
| 1  | 7  | 19 | 19 | 7  | 12 | 3  |    |    |    |    | 5  | 16 | 8  | 7  | 8  | 16 |    |
| 3  | 9  |    | 17 |    | 17 | 7  | 2  | 6  | 4  |    | 3  |    | 11 |    | 2  |    | 2  |
| 19 | 7  | 4  | 4  | 16 |    | 2  |    | 11 |    | 8  | 7  | 6  | 5  | 16 | 9  | 3  | 4  |
|    | 6  |    | 4  | 5  | 13 | 18 | 7  | 1  | 15 |    | 4  |    | 4  |    | 13 |    | 3  |
| 8  |    | 4  |    | 11 |    | 3  |    | 8  | 16 | 16 | 8  | 15 | 5  | 13 | 1  | 20 |    |
| 21 | 3  | 3  | 6  | 9  | 3  | 4  | 4  |    | 18 |    | 21 |    |    | 16 |    |    |    |
| 13 |    | 23 |    | 3  |    | 8  | 1  |    | 16 | 14 | 7  | 8  | 16 |    |    |    |    |
| 12 | 2  | 3  | 3  | 18 | 22 | 9  | 17 |    | 2  |    | 2  |    | 18 |    |    |    |    |
| 4  |    | 18 |    | 8  |    | 17 |    | 7  | 4  | 13 | 6  | 3  |    |    |    |    |    |

|   |   |   |   |   |   |   |   |   |    |    |    |    |    |    |    |    |    |    |    |    |    |    |
|---|---|---|---|---|---|---|---|---|----|----|----|----|----|----|----|----|----|----|----|----|----|----|
| 1 | 2 | 3 | 4 | 5 | 6 | 7 | 8 | 9 | 10 | 11 | 12 | 13 | 14 | 15 | 16 | 17 | 18 | 19 | 20 | 21 | 22 | 23 |
| C | R | E | S |   |   |   |   |   |    |    |    |    |    |    |    |    |    |    |    |    |    |    |

ANSWER: 1-C, 2-R, 3-E, 4-S, 5-P, 6-D, 7-A, 8-T, 9-L, 10-Z, 11-U, 12-G, 13-I, 14-M, 15-H, 16-O, 17-Y, 18-N, 19-B, 20-K, 21-W, 22-F, 23-V.







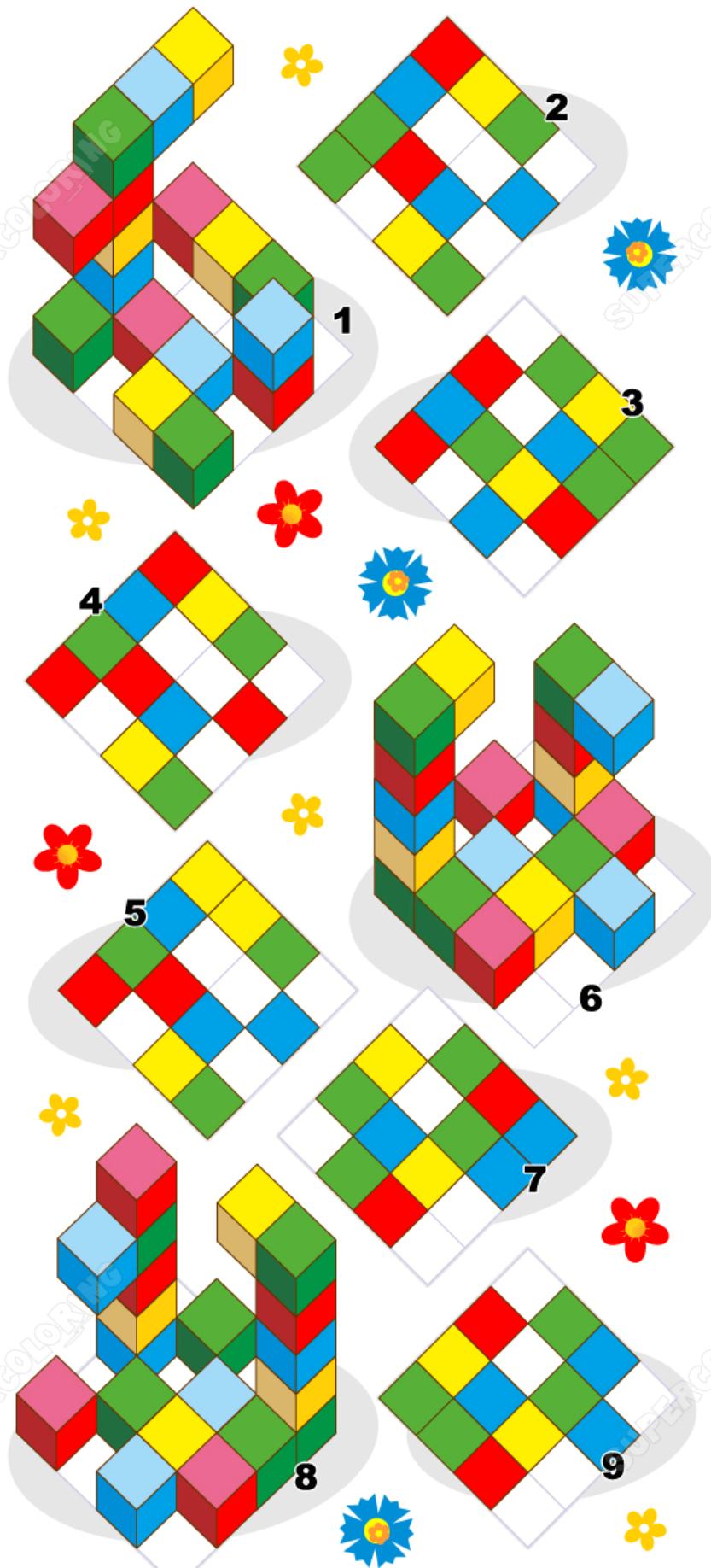
# *Garden Sort*

Use 3 straight lines to separate each of the flowers in the garden into their own area.



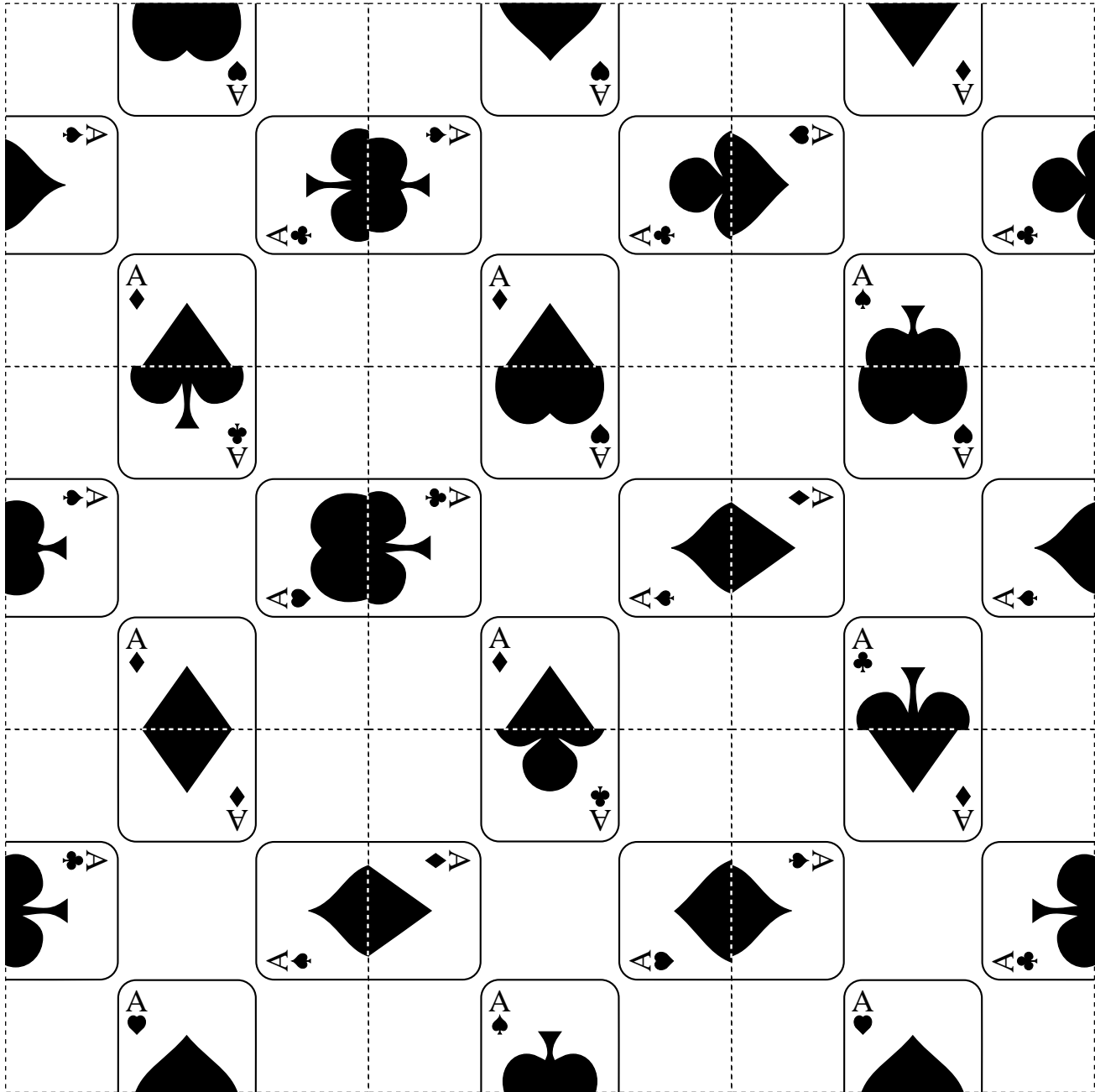


Find the top views that match the 3D blocks



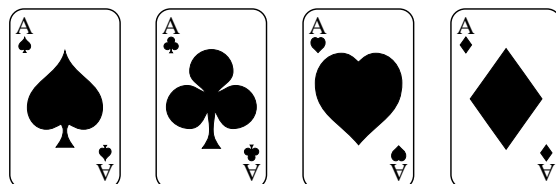


# The *FOUR ACES* Puzzle



## Instructions:

Cut out the 9 squares shown above by cutting along the dotted lines. The object of the puzzle is to take the 9 squares and arrange them into a 3 X 3 square. But there is one catch. The squares have half of a playing card on each edge. As you put one square next to another, you have to make sure that the two adjacent squares have compatible card halves. That is, one of the playing cards shown below must be created by adjacent squares. Good luck.







## New Wonders of the World - Logic Grid

In 2007, 7 monuments were chosen between a selection of 200 to be the New Wonders of the World. One year after, four women traveled individually to see a wonder. Which wonder did they see?

1. The woman who visited the Christ the Redeemer is either the woman who traveled in April or the doctor.
2. Sandra traveled sometime after the woman that traveled to Rio de Janeiro.
3. The doctor is either Sandra or the woman who traveled to see the Colosseum.
4. Gladys traveled one month after the musician.
5. Of Connie and the veterinarian, one visited the Christ the Redeemer and the other traveled in July.
6. Gladys is a veterinarian.
7. The musician traveled one month before the woman who traveled to Mexico.

|        |              | Wonder       |                     |           |           | Career |        |          |              | Month |       |      |      |
|--------|--------------|--------------|---------------------|-----------|-----------|--------|--------|----------|--------------|-------|-------|------|------|
|        |              | Chichen Itza | Christ the Redeemer | Colosseum | Taj Mahal | doctor | lawyer | musician | veterinarian | May   | April | June | July |
| Name   | Connie       |              |                     |           |           |        |        |          |              |       |       |      |      |
|        | Gladys       |              |                     |           |           |        |        |          |              |       |       |      |      |
|        | Ruth         |              |                     |           |           |        |        |          |              |       |       |      |      |
|        | Sandra       |              |                     |           |           |        |        |          |              |       |       |      |      |
| Month  | May          |              |                     |           |           |        |        |          |              |       |       |      |      |
|        | April        |              |                     |           |           |        |        |          |              |       |       |      |      |
|        | June         |              |                     |           |           |        |        |          |              |       |       |      |      |
|        | July         |              |                     |           |           |        |        |          |              |       |       |      |      |
| Career | doctor       |              |                     |           |           |        |        |          |              |       |       |      |      |
|        | lawyer       |              |                     |           |           |        |        |          |              |       |       |      |      |
|        | musician     |              |                     |           |           |        |        |          |              |       |       |      |      |
|        | veterinarian |              |                     |           |           |        |        |          |              |       |       |      |      |


| Name   | Wonder | Career | Month |
|--------|--------|--------|-------|
| Connie |        |        |       |
| Gladys |        |        |       |
| Ruth   |        |        |       |
| Sandra |        |        |       |

play more logic grid puzzles on [brainzilla.com/logic-grid-puzzles](http://brainzilla.com/logic-grid-puzzles)



# REBUS FOR YOU !

Can you solve these visual word puzzles? Let your mind explore and you are sure to find the answers. Good luck!

|   |   |
|---|---|
| 1.<br><b>FACE</b>   | 2.<br><b>EGG EGG</b><br><b>HAM</b>  |
| 3.<br><b>BUR</b>  | 4<br>THUMBS THUMBS<br>THUMBS THUMBS<br>THUMBS THUMBS...   |
| 5.<br>TEEF<br>FEET<br>TEEF  | 6.<br>FAMILY<br><br>SHEEP |
| 7.<br>po <b>FISH</b> nd   | 8.<br>ISSUE ISSUE ISSUE<br>ISSUE ISSUE ISSUE<br>ISSUE ISSUE ISSUE<br>ISSUE                                    |
| 9.<br><b>TIME</b><br>a b d e<br>f g h i j<br>k l m n o<br>p q r s t<br>u v w x y<br>z | 10.<br>DAYSALLWORK  |

# REBUS FOR YOU !

## SOLUTIONS

|                              |                              |
|------------------------------|------------------------------|
| 1. Red in the face           | 2. Green Eggs and Ham        |
| 3. Backrub                   | 4. All thumbs                |
| 5. Two left feet             | 6. Black sheep of the family |
| 7. Big fish in a little pond | 8. Tennis shoes              |
| 9. Long time, no see         | 10. All in a day's work      |



## Free Printable Sudoku Puzzles

Sudoku is easy to play and the rules are simple. Fill in the blanks so that each row, each column, and each of the nine 3x3 grids contain one instance of each of the numbers 1 through 9.

### Sudoku #769 (Easy)

|   |   |   |   |   |   |   |   |   |
|---|---|---|---|---|---|---|---|---|
|   |   |   |   | 1 | 6 |   |   | 8 |
| 2 | 3 |   |   |   | 4 |   |   | 1 |
|   |   |   |   |   | 2 |   |   |   |
|   | 2 | 9 | 7 | 8 |   | 5 |   |   |
| 7 |   |   |   |   |   | 8 | 6 |   |
|   |   | 5 |   |   |   |   | 1 | 2 |
|   |   |   |   | 4 | 3 | 9 |   |   |
| 5 | 8 |   |   | 6 |   |   | 3 |   |
|   | 9 |   |   |   |   |   |   |   |

### Sudoku #770 (Easy)

|   |   |   |   |   |   |   |   |   |
|---|---|---|---|---|---|---|---|---|
|   |   |   |   |   | 1 | 6 |   |   |
|   |   | 4 |   | 6 | 8 |   |   | 9 |
|   | 7 |   |   |   |   |   | 3 |   |
| 5 | 2 |   |   |   |   | 1 |   | 4 |
|   |   | 8 |   |   |   | 2 |   | 3 |
|   | 4 |   | 5 |   | 2 |   |   |   |
| 2 | 5 | 3 | 1 |   |   |   |   |   |
| 7 |   | 9 | 4 |   |   |   |   |   |
|   | 1 |   |   |   |   |   |   |   |

Additional Sudoku puzzles as well as the solution to these two puzzles can be found at the following web page: <https://www.puzzles.ca/sudoku>

## Free Printable Sudoku Puzzles

Sudoku is easy to play and the rules are simple. Fill in the blanks so that each row, each column, and each of the nine 3x3 grids contain one instance of each of the numbers 1 through 9.

### Sudoku #757 (Hard)

|   |   |   |   |   |   |   |  |   |
|---|---|---|---|---|---|---|--|---|
|   |   | 5 | 9 | 3 |   |   |  |   |
| 7 |   |   | 4 |   |   |   |  | 8 |
|   |   |   |   |   | 2 | 9 |  |   |
|   |   |   |   | 5 |   |   |  |   |
| 2 |   | 9 |   |   |   |   |  |   |
|   |   | 8 |   |   |   | 4 |  | 5 |
|   |   |   |   |   |   |   |  | 9 |
| 8 | 6 | 3 |   |   |   |   |  |   |
|   |   | 2 | 8 |   | 1 |   |  | 4 |

### Sudoku #758 (Hard)

|   |   |   |   |   |   |   |   |   |
|---|---|---|---|---|---|---|---|---|
|   |   |   | 3 |   |   |   |   |   |
| 9 |   | 7 | 5 |   |   |   |   | 3 |
| 2 |   | 5 |   | 8 |   |   | 6 |   |
|   |   |   | 8 |   |   |   | 3 |   |
| 6 | 9 |   |   |   | 7 | 2 |   |   |
| 3 |   |   |   | 1 |   |   |   | 4 |
|   |   | 1 |   |   |   |   |   |   |
|   |   |   |   |   | 4 | 5 | 2 |   |
|   |   |   | 2 |   |   |   |   |   |

Additional Sudoku puzzles as well as the solution to these two puzzles can be found at the following web page: <https://www.puzzles.ca/sudoku>

## Easy Jigsaw Sudokus from Puzzles to Print

### Set 1

|   |   |   |   |   |   |   |   |
|---|---|---|---|---|---|---|---|
| 5 | 8 |   | 4 | 1 |   | 7 | 6 |
| 1 |   |   | 7 |   |   |   | 8 |
|   |   |   | 3 | 4 |   |   |   |
| 8 |   | 5 |   |   | 4 | 6 | 3 |
| 4 | 6 | 8 |   |   | 7 |   | 2 |
|   |   |   | 8 | 6 |   |   |   |
| 2 |   |   |   | 3 |   |   | 4 |
| 3 | 5 |   | 6 | 8 |   | 2 | 7 |

|   |   |   |   |   |   |   |   |
|---|---|---|---|---|---|---|---|
| 8 |   | 3 |   | 7 |   | 2 | 1 |
| 2 |   | 5 | 6 |   | 7 |   |   |
|   | 2 |   |   |   |   | 5 | 6 |
| 6 |   |   | 2 | 1 |   | 7 |   |
|   | 3 |   | 8 | 2 |   |   | 7 |
| 1 | 5 |   |   |   |   | 3 |   |
|   |   | 2 |   | 6 | 3 |   | 5 |
| 3 | 8 |   | 4 |   | 1 |   | 2 |

Just as in a regular sudoku, the rows and columns must still contain one and only one of the digits. However, as you can see, instead of the usual regularly shaped subareas, known as nonets, the boxes are irregularly shaped. Just as in a standard sudoku, you may only put one of each of the digits in these subareas.

|   |   |   |   |   |   |   |   |
|---|---|---|---|---|---|---|---|
| 4 | 1 | 6 |   | 7 | 5 | 8 | 2 |
| 8 |   |   |   | 5 |   |   | 3 |
| 3 |   |   | 7 |   |   |   | 1 |
| 1 | 5 |   |   |   | 7 |   |   |
|   |   | 5 |   |   |   | 7 | 6 |
| 7 |   |   |   | 1 |   |   | 5 |
| 6 |   |   | 5 |   |   |   | 8 |
| 5 | 4 | 8 | 1 |   | 6 | 3 | 7 |

|   |   |   |   |   |   |   |   |
|---|---|---|---|---|---|---|---|
| 4 |   |   |   | 7 | 8 |   | 3 |
|   | 7 |   |   | 6 |   | 5 |   |
| 2 |   |   | 4 |   |   |   |   |
| 3 | 6 |   | 1 | 4 | 7 |   |   |
|   |   | 2 | 7 | 1 |   | 6 | 8 |
|   |   |   |   | 2 |   |   | 5 |
|   | 2 |   | 3 |   |   | 4 |   |
| 6 |   | 8 | 5 |   |   |   | 7 |

## ACROSS

- 1. The Big Orange
- 9. Author LeShan
- 10. The Fair City
- 11. Dig deep
- 13. Strict
- 15. The City of Music
- 20. Pint place
- 22. Something to bring home
- 24. The Grey City
- 28. Fish eggs
- 29. The Queen City

## DOWN

- 1. \_\_\_ Talk
- 2. College web ending
- 3. Product info spot
- 4. Singer's pride
- 5. "Presto!"
- 6. That girl
- 7. Nonexpert
- 8. Soup server
- 11. Patel of *Lion*
- 12. Moving vehicle
- 14. Palindromic family member

- 16. Largest penguin
- 17. Prefix for *natal* or *classical*
- 18. Airline that folded in 2001
- 19. Author Rand
- 20. Lhasa's land
- 21. Nearsighted cartoon Mr.
- 22. Yank Yogi
- 23. Bow or Barton
- 25. *Newhart* setting
- 26. Silent assent
- 27. Congressional vote

|    |   |    |    |    |  |    |  |    |    |    |    |    |
|----|---|----|----|----|--|----|--|----|----|----|----|----|
| 1  | 2 | 3  |    | 4  |  | 5  |  | 6  |    | 7  |    | 8  |
| 9  |   |    |    |    |  |    |  |    |    |    |    |    |
| 10 |   |    |    |    |  |    |  |    |    |    |    |    |
|    |   |    |    |    |  |    |  |    |    |    |    |    |
| 11 |   |    | 12 |    |  | 13 |  | 14 |    |    |    |    |
|    |   |    |    |    |  |    |  |    |    |    |    |    |
| 15 |   | 16 |    | 17 |  |    |  |    | 18 |    |    | 19 |
|    |   |    |    |    |  |    |  |    |    |    |    |    |
| 20 |   |    |    |    |  | 21 |  | 22 |    | 23 |    |    |
|    |   |    |    |    |  |    |  |    |    |    |    |    |
| 24 |   |    |    | 25 |  |    |  |    |    |    | 26 | 27 |
|    |   |    |    |    |  |    |  |    |    | 28 |    |    |
| 29 |   |    |    |    |  |    |  |    |    |    |    |    |

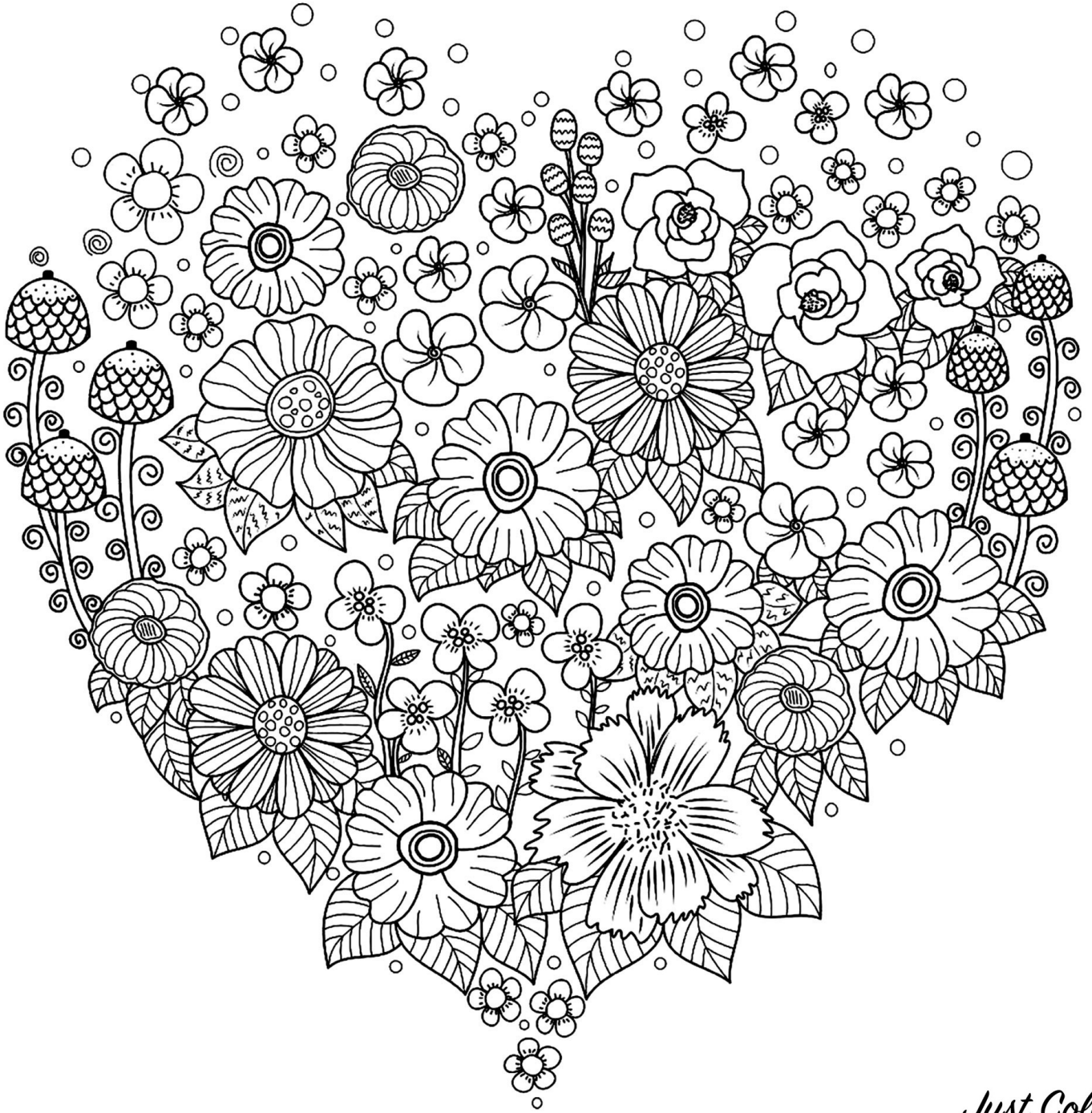
# Spring Challenge



- |                  |                |           |              |          |
|------------------|----------------|-----------|--------------|----------|
| April            | chick          | fog       | Memorial Day | spring   |
| April Fool's Day | Children's Day | garden    | nest         | sprout   |
| Arbor Day        | Cinco de Mayo  | gosling   | Passover     | stem     |
| awaken           | cloud          | grass     | picnic       | storm    |
| baby             | cocoon         | green     | piglet       | sunshine |
| baseball         | colt           | grow      | plant        | thaw     |
| bee              | daffodil       | hatch     | puddle       | thunder  |
| bird             | dandelion      | insect    | rainbow      | tulip    |
| bloom            | dig            | iris      | raincoat     | umbrella |
| blossom          | duckling       | kite      | rainy        | violet   |
| bug              | earth          | lamb      | roots        | warm     |
| bulb             | Earth Day      | leaf      | season       | water    |
| bunny            | Easter         | lightning | seed         | weather  |
| butterfly        | egg            | lilac     | shovel       | weed     |
| calf             | emerge         | March     | shower       | wind     |
| caterpillar      | flower         | May       | soil         | worm     |







*Just Color*



*Just Color*