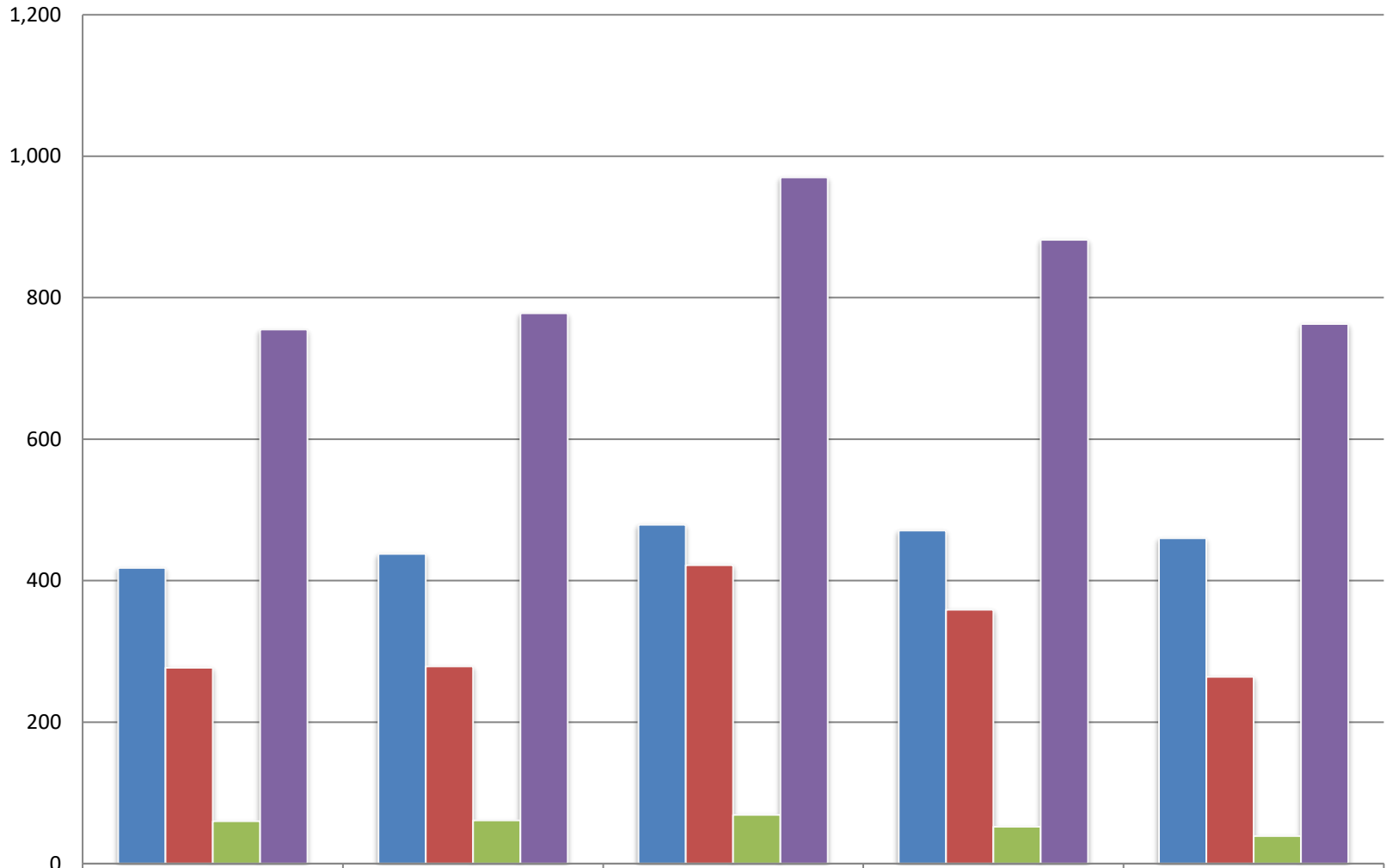


CDPL/CMMC Programs Five Year Comparisons: 2015-2019



| | 2015 | 2016 | 2017 | 2018 | 2019 |
|------------------|------|------|------|------|------|
| Youth Programs | 418 | 438 | 479 | 471 | 460 |
| Adult Programs | 277 | 279 | 422 | 359 | 264 |
| General Programs | 60 | 61 | 69 | 52 | 39 |
| Program Totals | 755 | 778 | 970 | 882 | 763 |