

**SURVEYOR'S RECORD
BOOK**

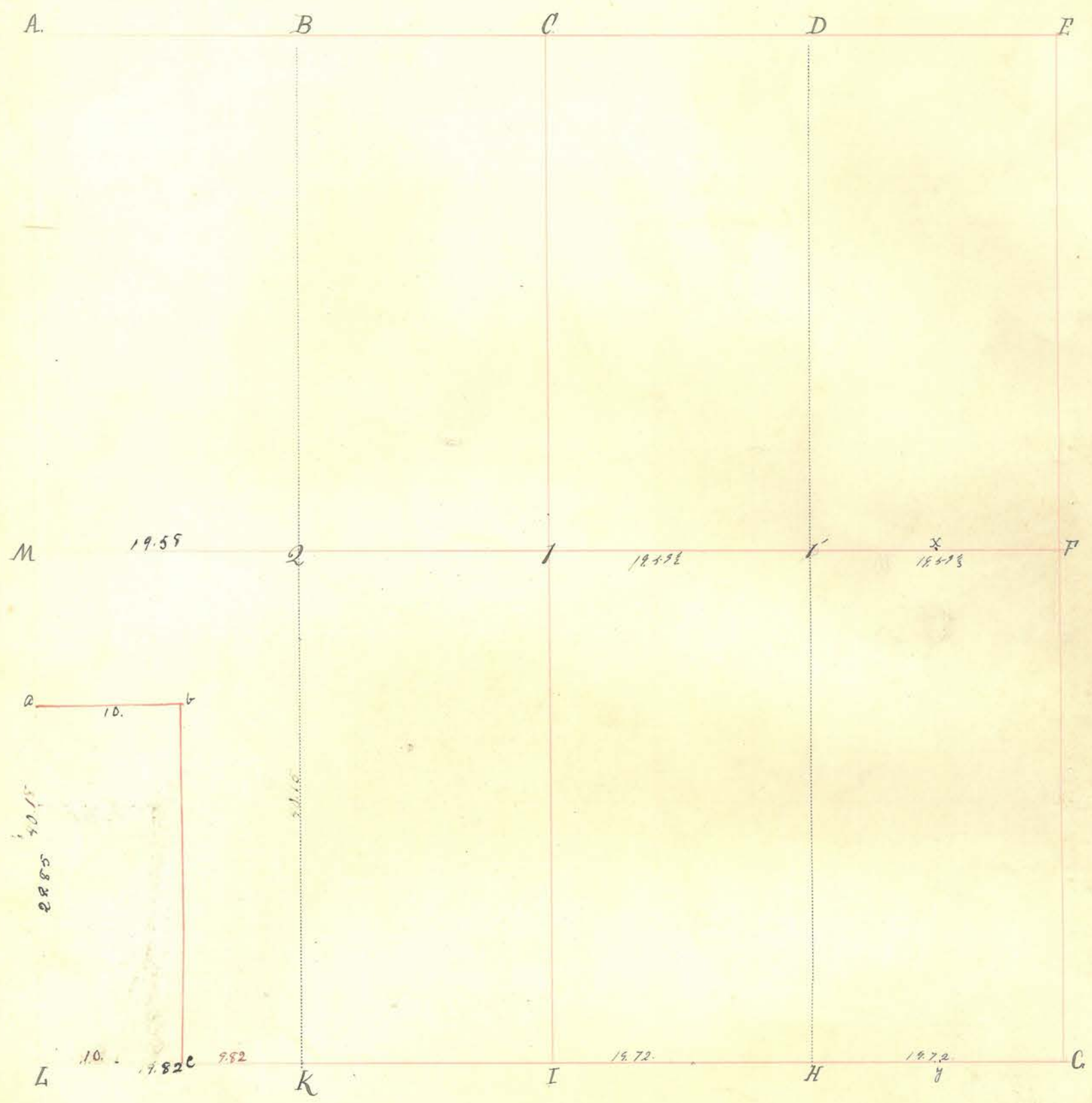
**Montgomery County
Indiana**

No 5

T17N – R4W

SCOTT

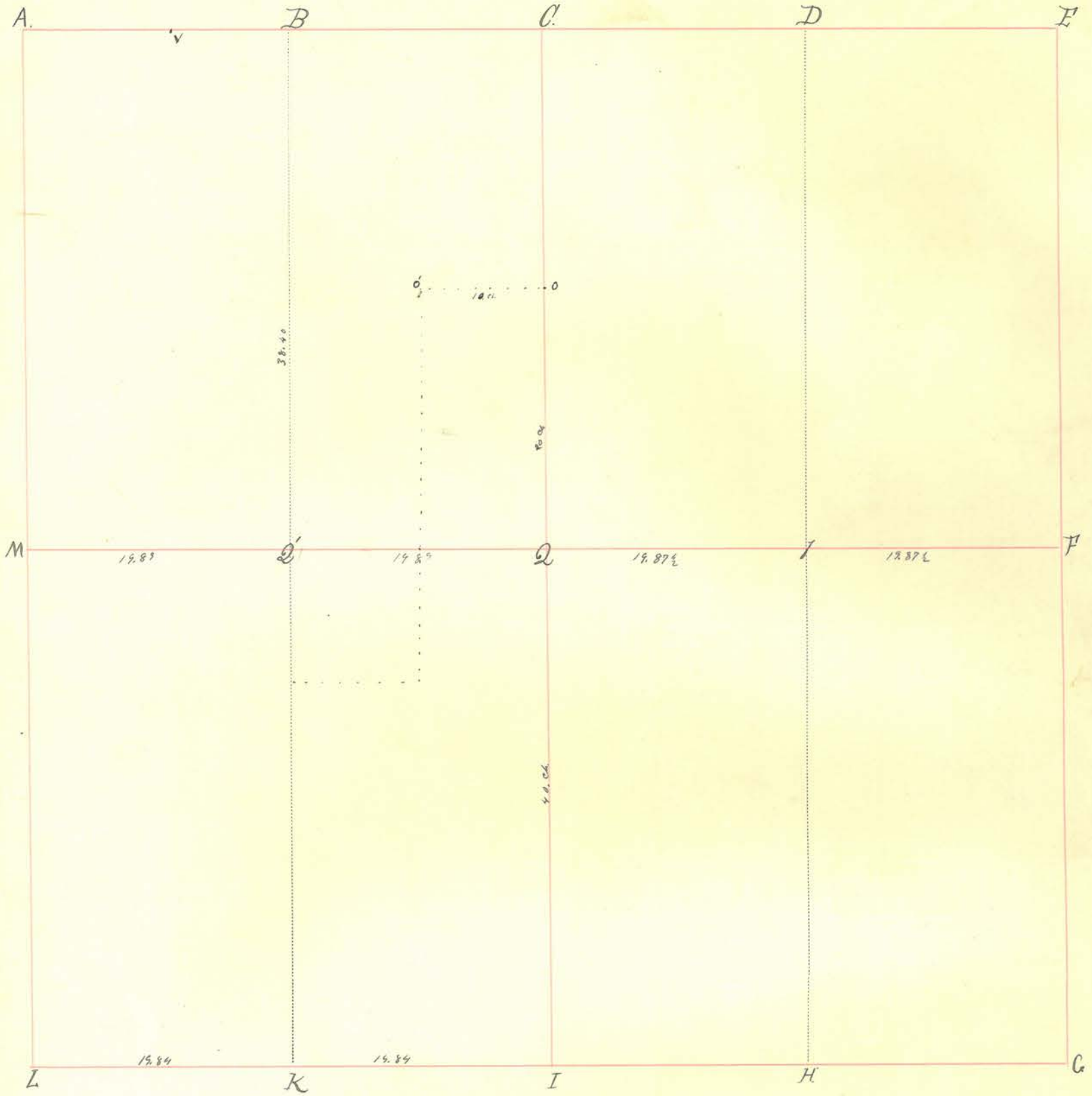
Section 7 Township 17 North, Range 4 West.



INDEX.	CORNERS.	SIZE.	MARKS.	WITNESSES.	SIZE.	DIRECTION.	DISTANCE.	MARKS.
A.								
B.								
C.								
D.								
E.								
F.								
G.								
H.				Sugar Ash.	2" 12"	S. 29° W N. 89° E.	12.	
I.								
K.	Stone							
L.	Stone							
M.	Stone							
1.				in road	48"	N. 61° W	30.	
1'				White Oak.	24"	N. 82° E	36.	
1''				Gray Ash.	20"	S. 60° W	29.	
2.	Stone			Beech Beech	14"	N. 81° E.	39.	

INDEX.	CORNERS.	SIZE.	MARKS.	WITNESSES.	SIZE.	DIRECTION.	DISTANCE.	MARKS.
x. y.				Red Oak Ash. Elm.	30" 14" 6"	N 67° W N 81° E S 16° E	53 15 45	(Back)
				March 1831 W ¹ / ₂ of S.E. qr. for Henry Kenny and Charles Harvey. Plat. filed. Sketch. Vide "Old Record"				
a b c	Stake " "			March 17, 1889 W ¹ / ₂ of S.W. qr for Matthias Frantz & Hirs Jas. A. Harding Co. S. Red Oak	8"	N 80° E	8 1/2	

Section 2 Township 17 North, Range 4 West.



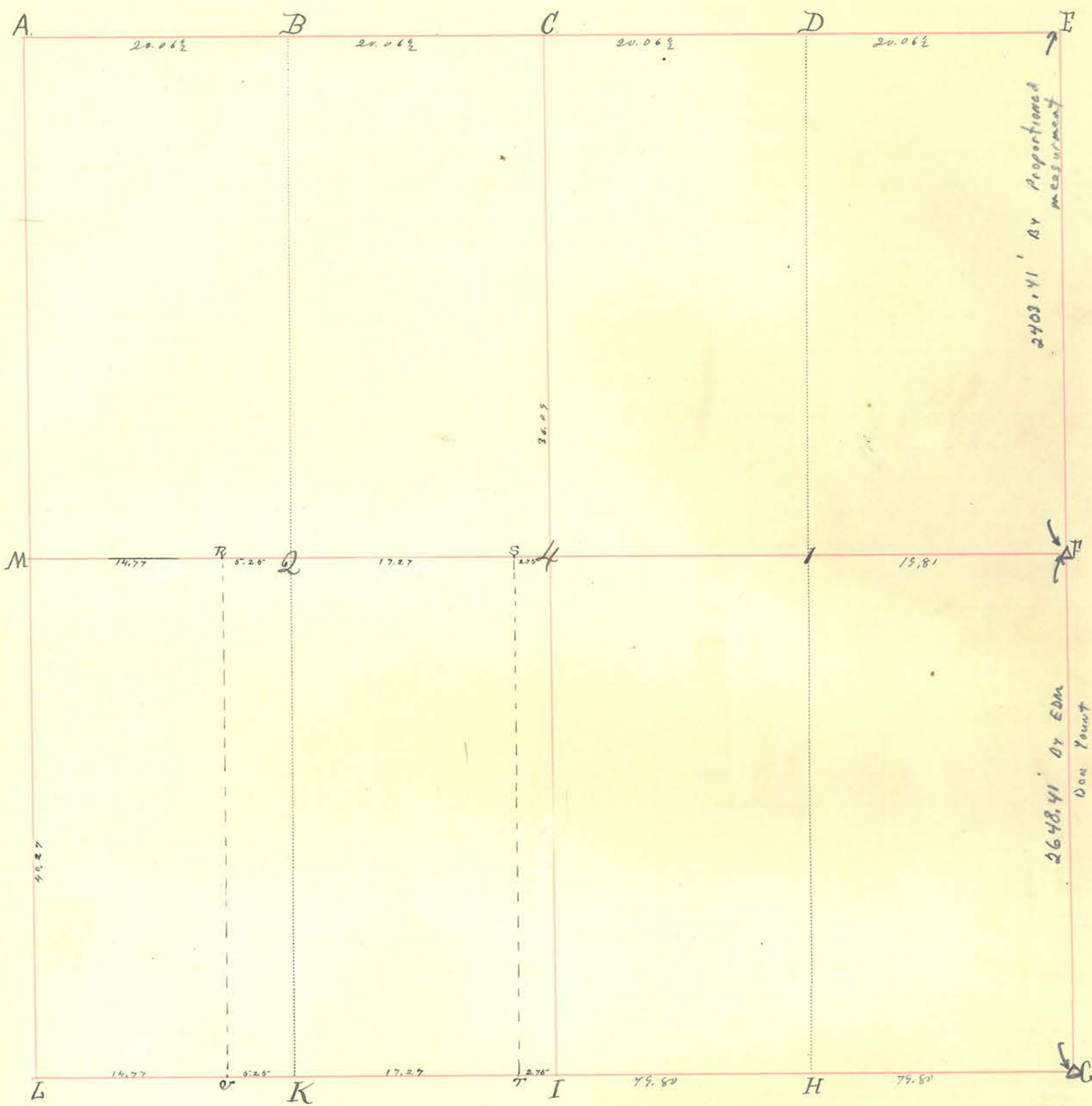
INDEX.	CORNERS.	SIZE.	MARKS.	WITNESSES.	SIZE.	DIRECTION.	DISTANCE.	MARKS.
A.	Stone							
B.				Black Oak.	18"	N. 47° W.	5.	
C.	Stone			Hickory.	18"	S. 12° E.	39.	
D.								
E.								
F.								
G.								
H.								
I.								
K.				Hickory	23"	N. 70° W.	19.	
L.				Sugar.	8"	N. 44° E.	14.	
M.								
Q.	Stone			Elm.	24"	N. 45° W.	40. m. 04.	Buck.
R.								
X.	Stone							
Y.	Stone							

Section 9 Township 17 North, Range 4 West.

INDEX.	CORNERS.	SIZE.	MARKS.	WITNESSES.	SIZE.	DIRECTION.	DISTANCE.	MARKS.
0				Asst.	14"	S. 3° W.	41.	
0				White Oak.	33"	S. 21° E	68.	
				" " " "	34"	North	40.	700.249/1879.
				February 28 th 1833.				
				E.E. gr. for Isaac Halsey. E ¹ / ₂ of S.W. for W ^m Hillman. & W ¹ / ₂ for James Hoops.				
				Plats filed for Halsey and Hillman.				
								Ketchum Co.
				N.B. The Meeting House lot. is N. and S. 4 chains East W. 4 chains 1/4 given by Hillman and 3/4 by Halsey.				
								Vide "Old Record"

INDEX.	CORNERS.	SIZE.	MARKS.	WITNESSES.	SIZE.	DIRECTION.	DISTANCE.	MARKS.
	<i>filed.</i>		<i>March 12th 1833.</i>	<i>S.E. cor for George Watkins S.W. cor for Daniel Watkins.</i>				<i>S. plat-</i>
							<i>Keetchum C.S.</i>	

Section 4 Township 17 North, Range 4 West.



INDEX.	CORNERS.	SIZE.	MARKS.	WITNESSES.	SIZE.	DIRECTION.	DISTANCE.	MARKS.
A.								
B.								
C.	Stone.			Ash. Black Oak.	7" 1 1/2"	S. 18° E. N. 52° W.	10. 36.	
D.	Stone.			Beech. Sugar.	26" 14"	S. 11° E. N. 38° W.	23. 37.	
E.	Stone.							
F.	Stone.							
G.	Stone							
H.	Stone			B W al	12	S 3 W	38 1/2	1-4-1878
I.	Stone							
K.	Stone							
L.	Stone	large boulder						
M.	Stone							
N.	Stone							
O.	Stone			Poplar, White Oak.	20" 14"	Dr. 5° E. S. 14° S	4 20	(Buck)
P.	Stone							
Q.	Stone							

INDEX.	CORNERS.	SIZE.	MARKS.	WITNESSES.	SIZE.	DIRECTION.	DISTANCE.	MARKS.
--------	----------	-------	--------	------------	-------	------------	-----------	--------

E $\frac{1}{2}$ of N.E. qr. for Hezekiah Melkinnon, by George Harland. Brothers. W $\frac{1}{2}$ for Wm. D. Gray.
 S.E. qr. for Hoggie. and N.W. qr. for — January 25th 1831.
 Plots filed Ketchum
 November 17th 1858.
 W $\frac{1}{2}$ of N.E. qr. to David Pown. W $\frac{1}{2}$ of S.E. qr. same.

1-4-1898

Due notice having been given by Elizabeth J Mercer corners were established at
 R. S. T. V.
 Harvey E Wynkoop.

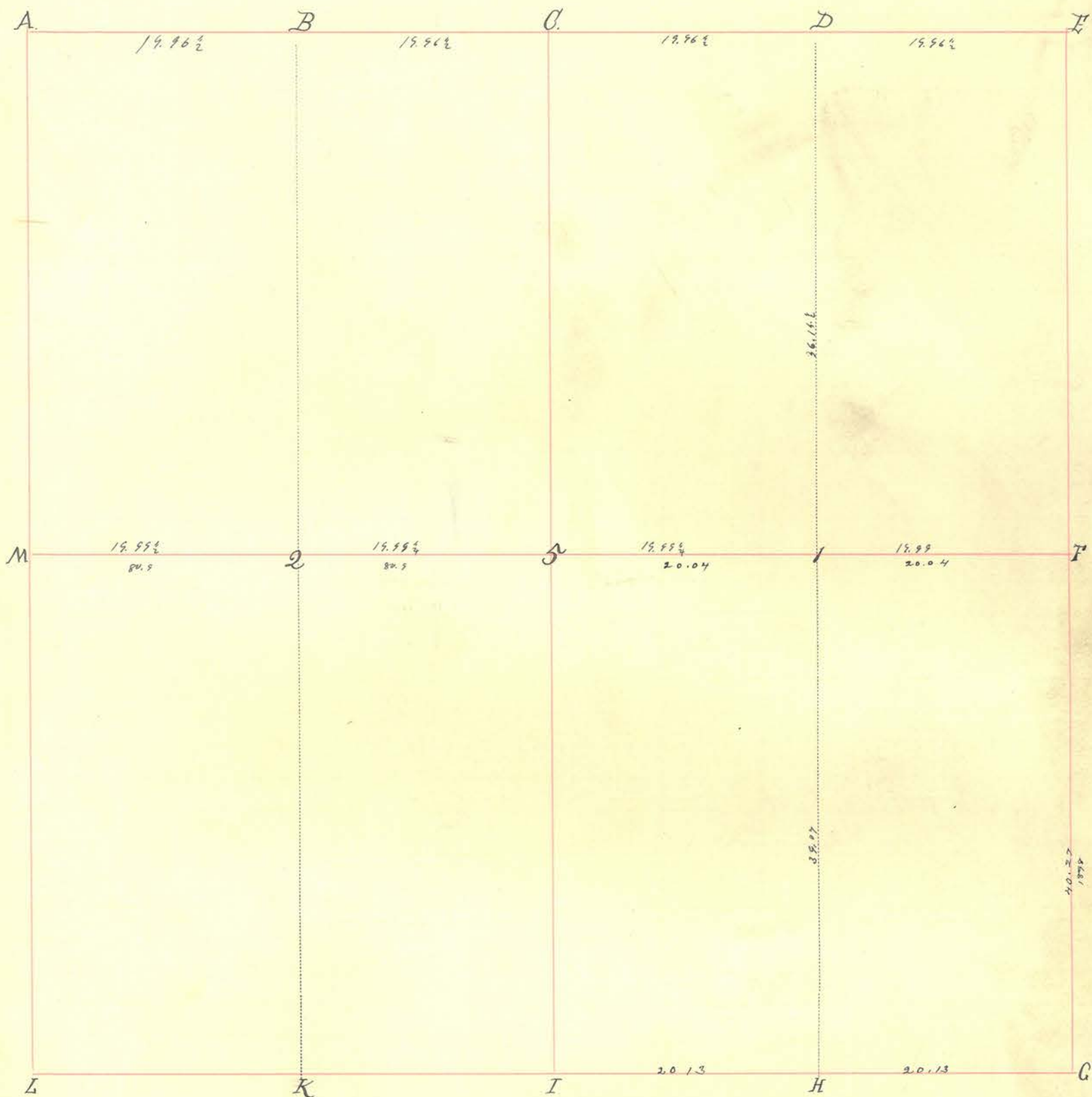
1-4-1898

Due notice having been given corners were established at S. & M
 by Mary K White, Nancy A White, Wm G White, Ethel S White, Lucretia White guardian
 Harvey E Wynkoop
 Co Surveyor.

- R Stone
- S Stone
- T Stone
- V Stone

Wm Engle, Louis Watkins & Chaimen - srow-

Section 5 Township 17 North, Range 4 West.

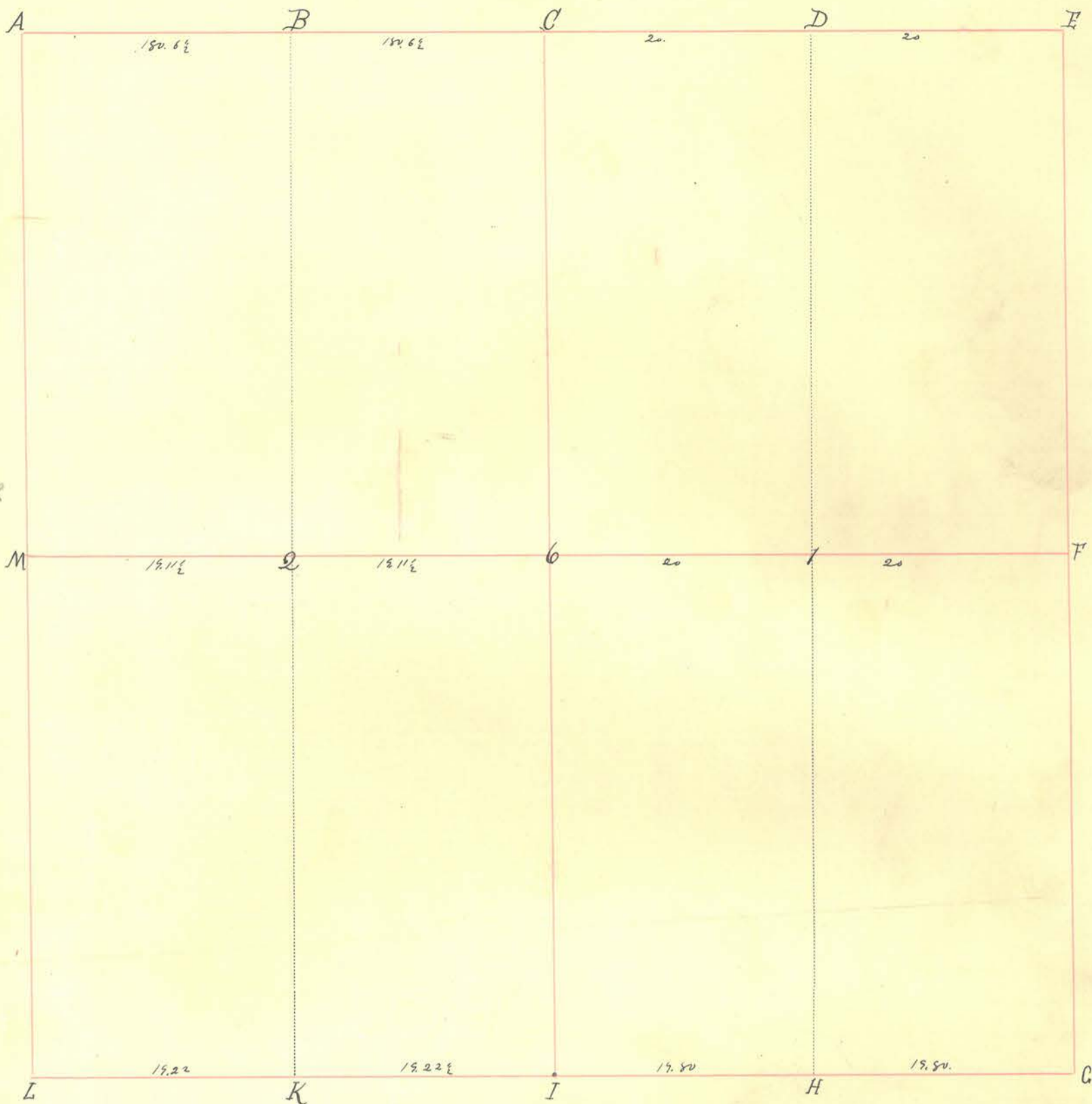


INDEX.	CORNERS.	SIZE.	MARKS.	WITNESSES.	SIZE.	DIRECTION.	DISTANCE.	MARKS.
A.				Beech	18"	S. 71° W	33.	
B.				" "	15"	N. 39° E.	35.	
C.				White Oak.	14"	S. 48° E.	7.	
D.				Hickory.	24"	N. 31° W	28.	
E.								
F.	Stone							
G.	Stone							
H.	Stone		Other stone is in north edge of the grade of road	Hickory	10	N 32 W	46 3/4	
I.	Stone			B Wal	10	N 65 W	54 3/4	1-5-1898
K.	Stone.							
L.	Stone							
M.	Stone. in Gravelly R.R.							
J.	Post.			Chickasaw	30	N 45 E	6 1/2	
1.	Stone			Sugar	12	S 62 W	37 1/2	Recorded May 1875. Buckles.
2.	Stone.			Hickory	18"	S. 65° E.	10	
				D. B. do.	20"	N. 41° W.	5 1/2	

Section 5 Township 17 North, Range 4 West.

INDEX.	CORNERS.	SIZE.	MARKS.	WITNESSES.	SIZE.	DIRECTION.	DISTANCE.	MARKS.	
				January 26 th 1830. Plat of N.W. cor for Frank Redenbaugh. E. for Thomas Bewel. S.W. cor. also for Redenbaugh. and the N.E. for Daniel Kelcey. Plat filed (Kelcey C.S.)					
1-5-1897.				Due notice having been given by John M. Jobe corners were located at H. 501 Harvey E. Wijnkoop Es. Surv.					
5-	Set by Ireland's Re-witnessed	Chickpea witness tree Re-witnessed	sugar sugar		18 18	N 44 1/2 E N 19 E	41 1/4 44 3/4		
				Wm Engle, Louis Watkins } Chamber sworn				1-5-1898	

Section 6 Township 17 North, Range 4 West.



INDEX.	CORNERS.	SIZE.	MARKS.	WITNESSES.	SIZE.	DIRECTION.	DISTANCE.	MARKS.
A.	Stone							
B.				Ironwood	14"	S. 30° E.	9	
C.				" "	10"	dr. 42° W	18.	
D.				Black Walnut	26"	dr. 63° E	23.	
E.				White Birch.	6"	N. 86° W.	32.	
F.				White Walnut.	20"	dr. 84° W	41	
G.				White Elm.	20"	S. 24° W.	34	
H.				White Oak	10"	S. 12° W.	31	
I.				Beech.	12"	dr. 63° E.	37½	
K.				Beech.	24"	dr. 11° W.	29	
L.				" "	12"	S. 11° W.	15	
M.	Stone			Beech.	16"	dr. 41° E	8	
6.				" "	15"	S. 2° W.	34½	
1.				Beech.	18"	S. 70° W	5-	
2.				" "	19"	N. 68° W	27	
				Sugar	20"	S. 39° W	13.	
				" "	14"	N. 30° W.	8.	
				Elm.	30"	N. 6° E.	21	
				Beech	10"	S. 81½ W.	4.	

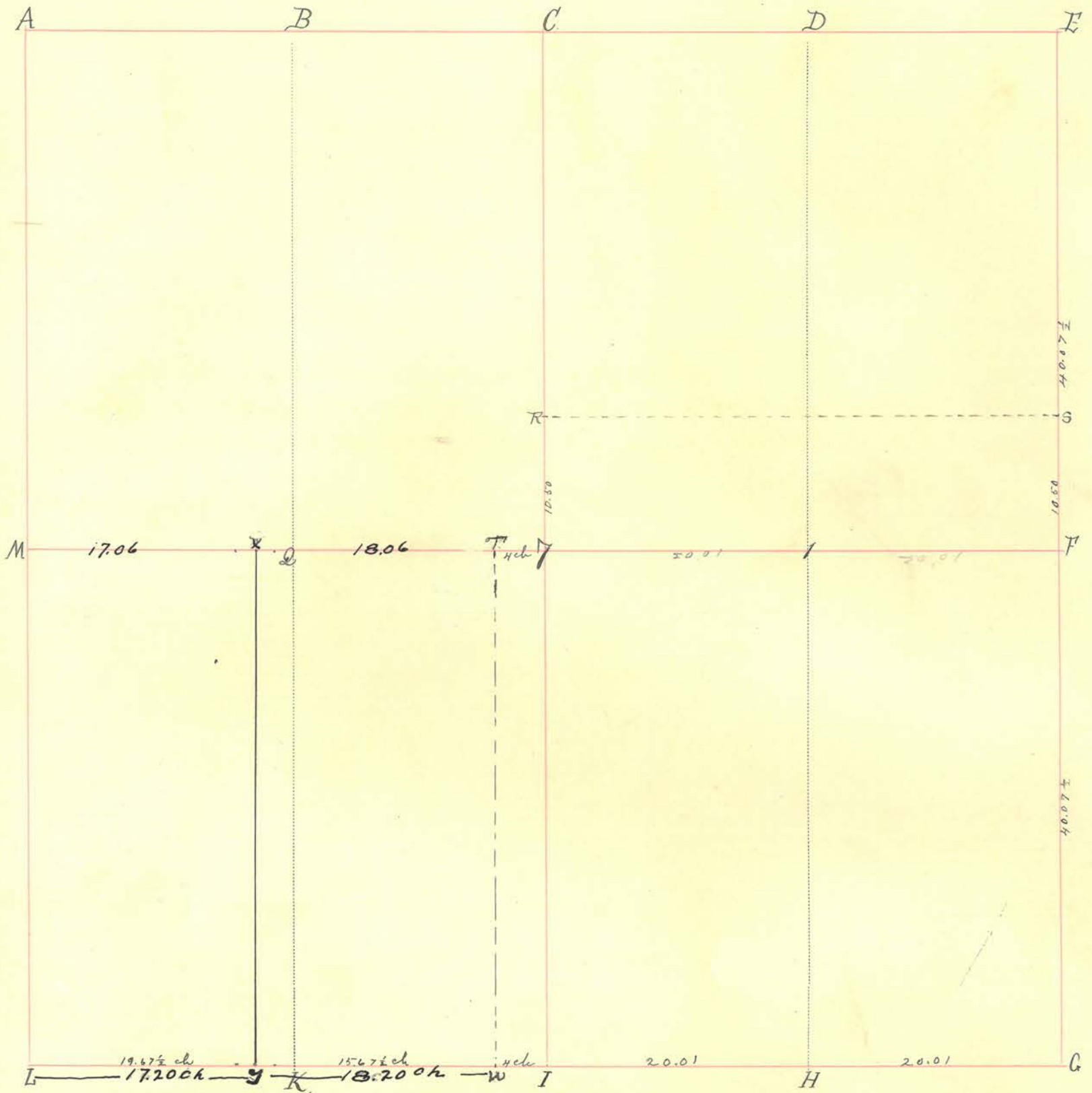
May 1865 Buck.

Section 6 Township 17 North, Range 4 West.

INDEX.	CORNERS.	SIZE.	MARKS.	WITNESSES.	SIZE.	DIRECTION.	DISTANCE.	MARKS.
--------	----------	-------	--------	------------	-------	------------	-----------	--------

Surveyed November 15th 1881.
 E $\frac{1}{2}$ of N.E. and E $\frac{1}{2}$ of S.E. qr. for Fred Redenbaugh. W $\frac{1}{2}$ of N.W. and
 W $\frac{1}{2}$ of S.W. qr. for Joseph White. E $\frac{1}{2}$ of S.W. qr. for Daniel Halsey. and W $\frac{1}{2}$ of S.E. qr. for
 Benjamin Ellord.
 Plat filed, Hatchew C.S.

Section 7 Township 17 North, Range 4 West.



INDEX.	CORNERS.	SIZE.	MARKS.	WITNESSES.	SIZE.	DIRECTION.	DISTANCE.	MARKS.
A.				Stone 30x12x9 north of corner				
B.								
C.	Stone							
D.								
E.	Stone							
F.	Stone	30x12x9	+					
G.	Stone							
H.								
I.	Stone							
K.	Stone							
L.	Stone							
M.	Gas pipe							
Y.	Stone			Ash & Wal	24 14	N 67W S 51E	51 29	
T.								
2.								
T	Stone							
W	Stone			B Wal	20	S 8 1/2 W	26 3/8	

INDEX.	CORNERS.	SIZE.	MARKS.	WITNESSES.	SIZE.	DIRECTION.	DISTANCE.	MARKS.
K	Staw							
g	Staw							
x	Stone							
y	Stone							
<p>Feb 19th 1913. Survey made to establish the line between Winnie Hinkle and Armstrong Heirs set stones at 'x' on north and 'y' on south.</p>								
<p>M. S. Harding Deputy Surveyor A.C.</p>								

INDEX.	CORNERS.	SIZE.	MARKS.	WITNESSES.	SIZE.	DIRECTION.	DISTANCE.	MARKS.
X	Stone, Grinnell Road.							
7	Stone.							
2				Red Oak.	10"	N. 44 1/2 W.	21.	Back, C.S.
<p>Surveyed January 22nd 1833. N.W. qr. for Wm. Lovv. E 1/2 of N.E. qr. for Robert Olddole. E 1/2 for old Mr. Inlow. W 1/2 of S.W. qr. for James Jones. E 1/2 of S.W. qr. and W 1/2 of S.E. for Wm. Lovv. E 1/2 of S.W. qr. and W 1/2 of S.E. qr. for Joseph Allen. Plats drawn. (Description mixed)</p> <p>February 14th 1866. S 1/2 of E 1/2 of N.W. qr. also 1/4 acre of South end W 1/2 of N.W. qr. to William Swindler.</p>								
s	Stone							

Section 9 Township 17 North, Range 4 West.

INDEX.	CORNERS.	SIZE.	MARKS.	WITNESSES.	SIZE.	DIRECTION.	DISTANCE.	MARKS.
--------	----------	-------	--------	------------	-------	------------	-----------	--------

February 10th 1854.

Certified D.A. Shannon Dep. Surveyor for John Buck. C.S.M.C
File "Old Record".

12-30-1897.

Due notice having been given by George W White Corners were established at F, S, II
Projected line 90M to F also Projected line 10 F in sec 10 back to M of sec 10 or F of sec 9
then having been staves at 9, M of sec 9, and 10, F of sec 10, and thereby located F of sec 9

Harvey E Wynkoop.
Co Surveyor.

- S Stone
- II Stone
- W Stone
- X Stone

scintressed

Boulder

13 Walnut

N 5 E

S 3 W

2 5/8

98 1/8

12-30-1897

1-4-1898

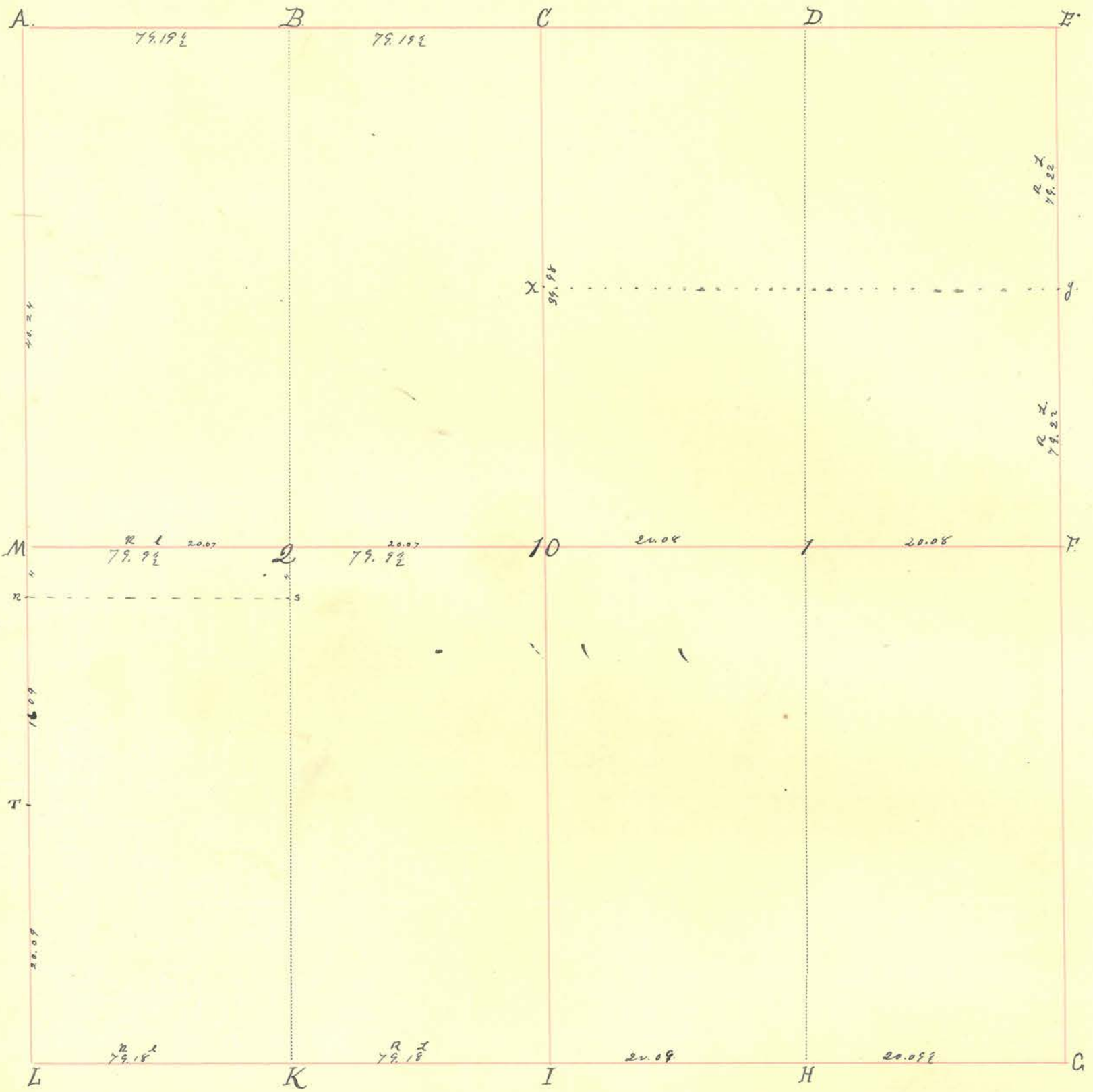
1-3-1898

1-3-1898

Louis Watkins, Wm Engle & Chamberlain sworn

Harvey E Wynkoop.
Co. S.

Section 10 Township 17 North, Range 4 West.



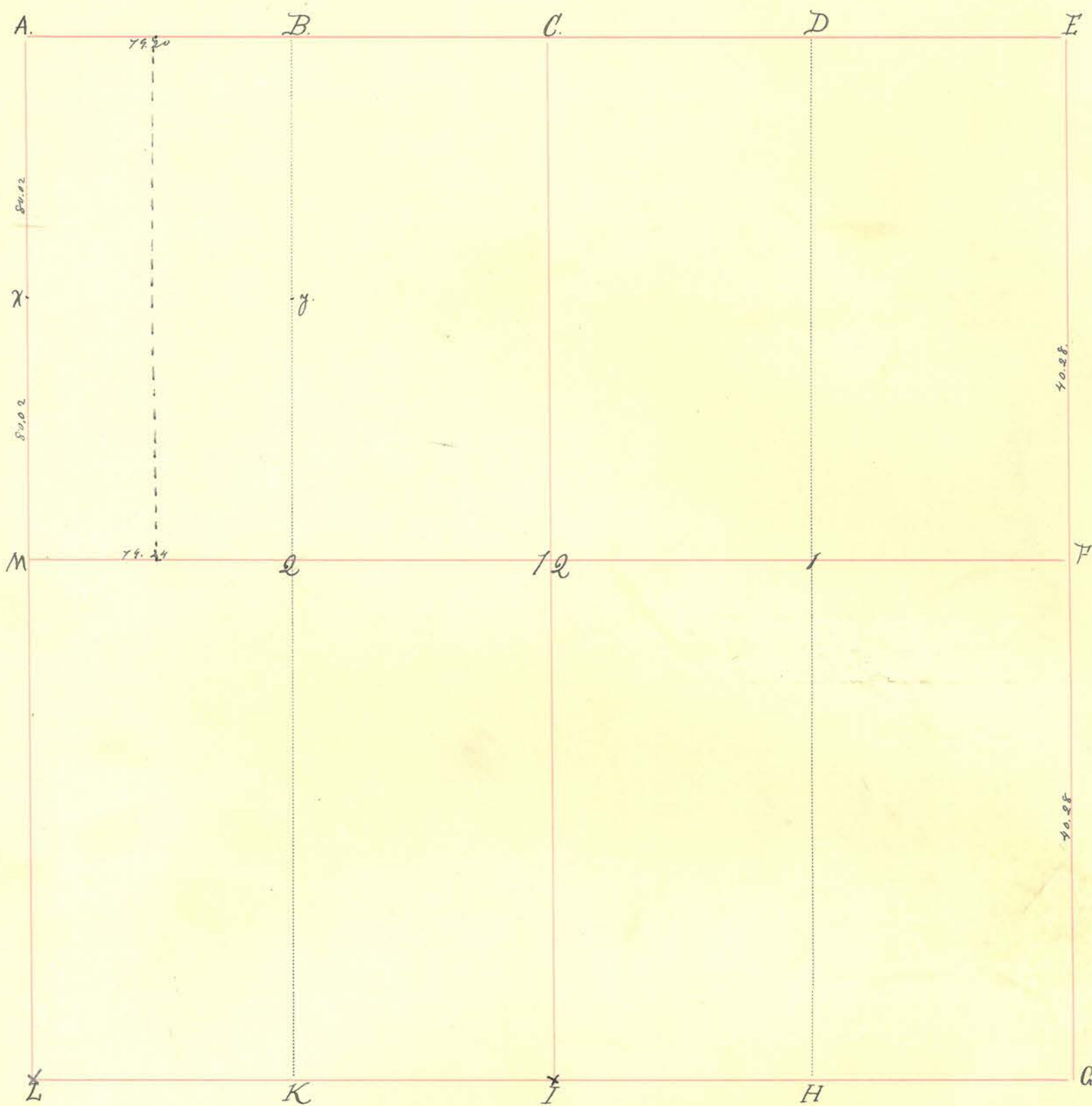
INDEX.	CORNERS.	SIZE.	MARKS.	WITNESSES.	SIZE.	DIRECTION.	DISTANCE.	MARKS.
A.	Stone			Maple	10	S 37 W	60	12-29-1897
B.	Stone.			Burr Oak Red Oak. Beech.	12 20"	S 58 W S. 66 W N. 62 E.	62 9 1/2 39.	
C.				Beech-	15"	N 22 E.	7.	
D.	Stone			" "	18"	S. 30 E.	36.	
E.								
F.	Stone.							
G.								
H.	Stone.			Black. Walnut Beech	26" 28"	S. 58 E. S. 54 W.	20. 34.	
I.	Stone.							
K.	Stone.			White Oak. Hickory	36" 5"	N. 45 E. N. 60 1/2 W.	14 1/2 27 1/2	
L.								
M.	Stone Line			Boulder Sugar. Beech.	20" 14"	S 70 E. N. 32 W. S. 63 E.	28 1/2 3 24.	12-30-1897
10.	Stone			Beech.	14"	S. 41 E.	17.	
1.	Stone			" "	15"	N. 69 W.	12.	
2.	Stone. Boulder very large			Sug	18	N 13 3/4 E	50 3/4	12-30-1897

Section 10. Township 17. North, Range 4. West.

INDEX.	CORNERS.	SIZE.	MARKS.	WITNESSES.	SIZE.	DIRECTION.	DISTANCE.	MARKS.	
7				Hickory. Hickory Sugar	18" 5" 30"	N. 67 1/2 W. N. 60 1/2 W. N. 34 W.	16. 27 1/2 15 1/2	(Buck)	
<p>Surveyed November 12th 1834. W 1/2 of N.E. qr for Riley Harrison. Plat filed for B. Harrison. (Buck) L. A. Litcher, C.S.</p> <p>December 7th & 8th 1833. W 1/2 of N.W. qr for W. White. E 1/2 for Leonard Graves. N 1/2 of W 1/2 of N.E. qr. for Richard Graves. S 1/2 for William Mounts. N 1/2 of E 1/2 of N.E. qr. for J. Graves. S 1/2 and E 1/2 of S.E. qr. for Samuel Graybill. W 1/2 for Joseph S. Wright. and E 1/2 of S.W. qr. Same. John Buck C.S., M.C.</p>									
<p>12-29-1897. Due notice having been given by M. Johnsons Corners were located at A, B, C & S Harry E. Weynekoop C. Surv.</p>									
R	Stone	lime stone		B. Ash	12	N 34 1/2 E	41 3/8		12-30-97
S	Stone	Boulders		B. Ash Eben	6 4	S 64 1/2 E N 80 1/2 E	9 1/2 6		12-30-1897
T	Stone	lime stone							
<p>W M 40.12, M R 4 ch, RT 16.09 ch, TL 20.09, M 2 20.04 ch, 2,10 20.04 ch H.C.W</p> <p>- W^m Engle, Louis Watkins & Chasmen sworn</p>									

INDEX.	CORNERS.	SIZE.	MARKS.	WITNESSES.	SIZE.	DIRECTION.	DISTANCE.	MARKS.
x y	Stone Stone.			Surreyed November 11 th 1834.				
				E $\frac{1}{2}$ of S.W. qr. for Hudson Harmon. W $\frac{1}{2}$ of S.E. for John Keeny. N.E. qr. for John W. Graves. E $\frac{1}{2}$ of S.E. qr. also for W th Graves. N.W. qr. in applicant. Plats filed for Harmon and Keeny.				Hatchens C.S.
o m	Stake "			March 16, 1849				W $\frac{1}{2}$ of S.E. qr. for Matthias Frantz Heas Jas. A. Harding Co. S.

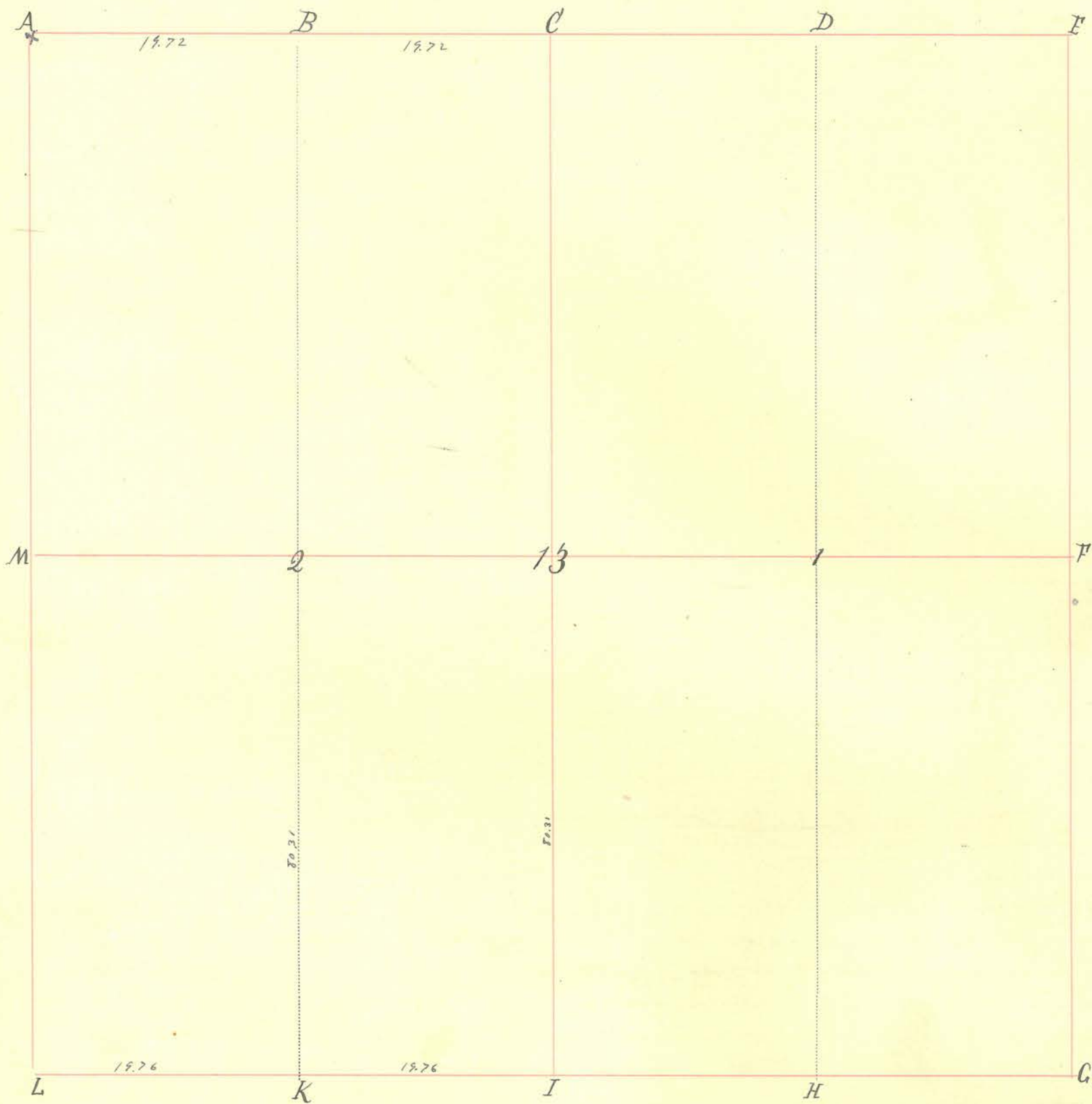
Section 12 Township 17 North, Range 4 West.



INDEX.	CORNERS.	SIZE.	MARKS.	WITNESSES.	SIZE.	DIRECTION.	DISTANCE.	MARKS.
A.	Stone							
B.	Stone							
C.								
D.								
E.								
F.								
G.	Stone			White Oak	36"	S. 1° E.	151	
H.								
I.	STONE	12/17/35						
K.								
L.	STONE	12/17/35						
M.	Stone							
10.								
J.								
Q.	Stone							

INDEX.	CORNERS.	SIZE.	MARKS.	WITNESSES.	SIZE.	DIRECTION.	DISTANCE.	MARKS.
x	Stone.							
y.	Stone.							
				G. James M. Wright. S.M.C. Aug 21 st 1883.				

Section 13 Township 17 North, Range 4 West.



INDEX.	CORNERS.	SIZE.	MARKS.	WITNESSES.	SIZE.	DIRECTION.	DISTANCE.	MARKS.
A.	Stone.							
B.	Stone.							
C.	Stone.							
D.								
E.	Stone (Waugh).	granite.	+					
F.								
G.	Stone	granite.	+	W. Oak stump.	3 ft.	N 58 W.	19 ft.	
H.				Buckeye Black Oak.	20" 18"	N. 28° W S. 71° E.	32 46	
I.								
K.				Hickory Burr Oak	16" 12"	N. 19° W. N. 72° E.	37 54	
L.	Stone.							
M.								
13.				Hickory	20"	S. 87½ W.	64	
1.				Elm. Ironwood.		S. 11° W N. 36° E.	18 37.	
2.	Slake in R.R.			Ironwood. Hickory.	6" 30"	S. 83° W S. 46° E.	21. 15.	(Back)

Section 13. Township 17. North, Range 4. West.

INDEX.	CORNERS.	SIZE.	MARKS.	WITNESSES.	SIZE.	DIRECTION.	DISTANCE.	MARKS.
--------	----------	-------	--------	------------	-------	------------	-----------	--------

Jan 20th 1832.

E. J. W. Jr. surveyed for Price by Crawford. and I surveyed the W. 1/2 for E. F. Harmon and established the corner of the lots A B.

Plats filed for Harmon.

Ketchum.

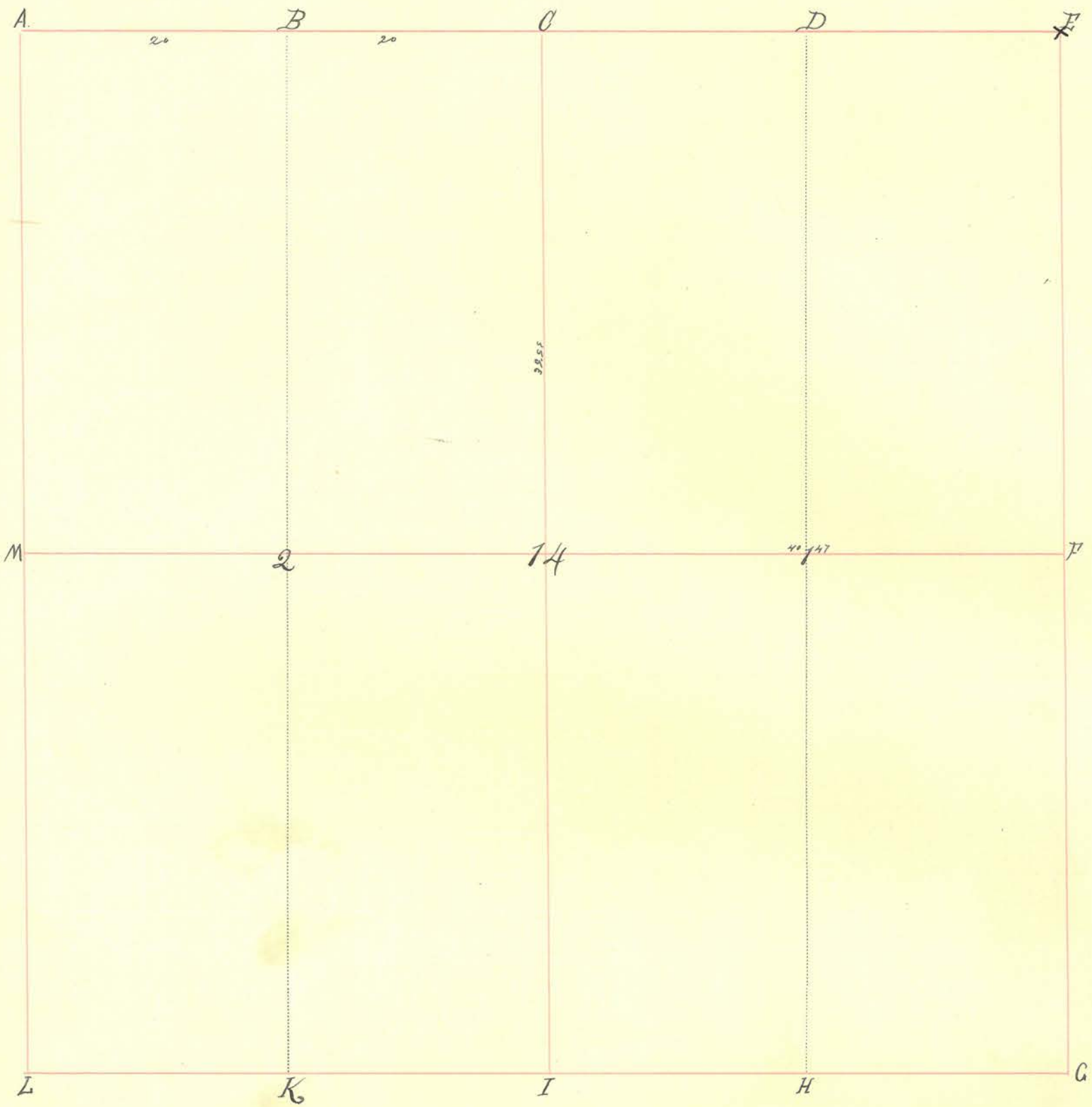
May 1st 1878. For J. F. Hyer and John Graybill. Line established from N. 1/2 B.

June 6. 1900.

Ten days having been given Hughes Wilson. I surveyed the line E. - S. for Taylor Bell. set a stake at F. 2.03 chains north of a stone at "M". (18-17-3).

Chas. Harding. Dep. S. M. Co.

Section 14 Township 17 North, Range 4 West.



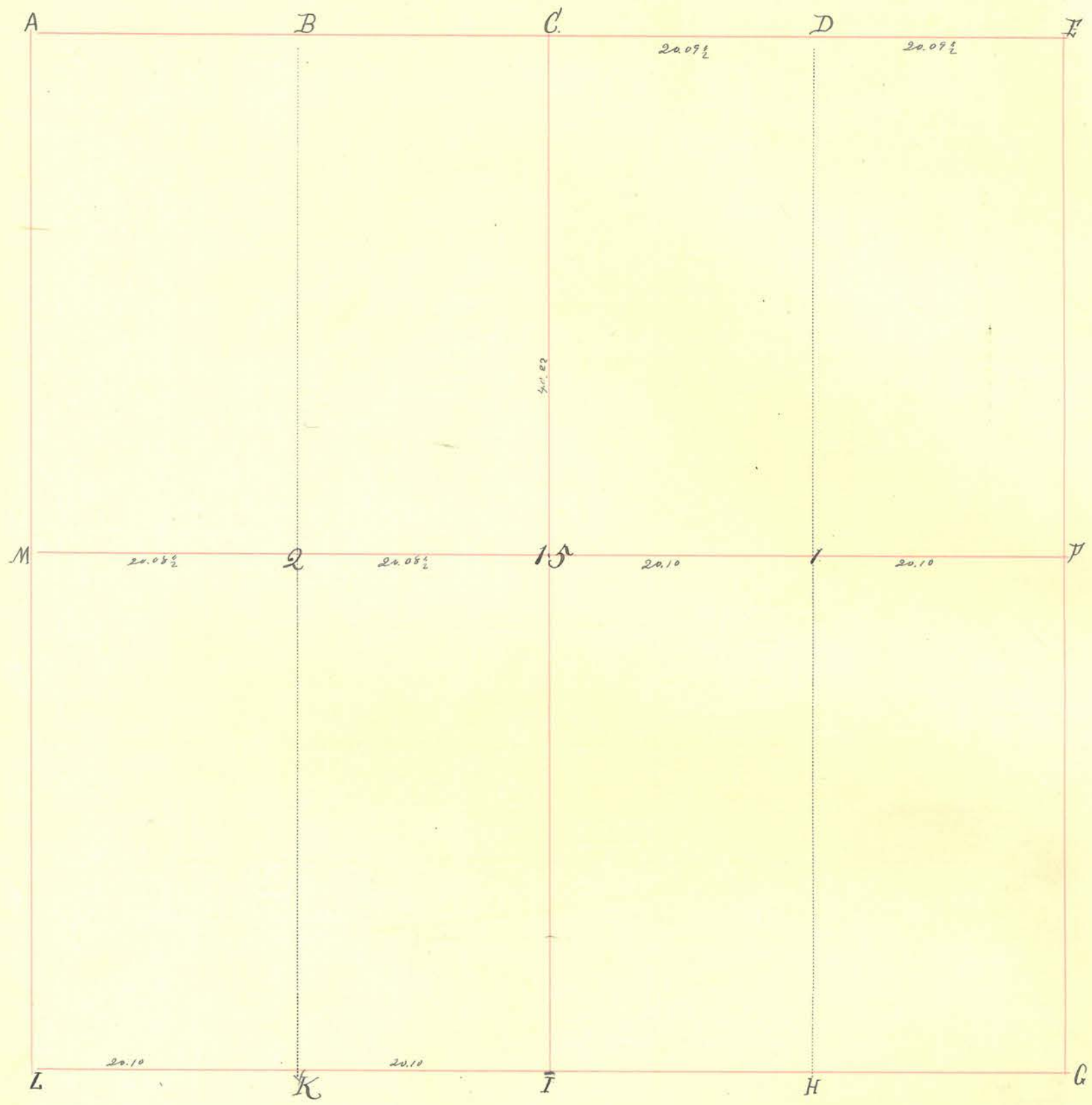
INDEX.	CORNERS.	SIZE.	MARKS.	WITNESSES.	SIZE.	DIRECTION.	DISTANCE.	MARKS.
A.					18"	N. 5° E.	18.	
B.				Elm. Buck.	12"	N. 73° W.	30.	
C.								
D.				Black Walnut Buck.	26" 28"	S. 58° E. S. 54° W.	20 34.	
E.	STONE 12/18/35							
F.								
G.								
H.								
I.	Stone		Fd. by St. Hwy.	477.6' S. of POT & 234 (Boat Spike)				
K.								
L.								
M.								
14.								
1.				Inwood, Sugar, Sugar, White Walnut	9" 26" 14" 26"	N. 14° W. S. 60° E. S. 10° W. N. 82° W.	12 30 31 31	
2.				Buck. Buckery	14" 20"	S. 6° E. N. 30° W.	15. 42.	(Buck)

Section 14 Township 17 North, Range 4 West.

INDEX.	CORNERS.	SIZE.	MARKS.	WITNESSES.	SIZE.	DIRECTION.	DISTANCE.	MARKS.
--------	----------	-------	--------	------------	-------	------------	-----------	--------

Surveyed May 23rd 1832.
 N.E. cor for Daniel Sharp. Plat delivered to A. Dimes, who paid for the survey with money deposited by Judge Dimes.
 E. 1/2 S.E. cor for Chas. F. H. Horn, the W. 1/2 for Joshua Harrison
 January 20th 1832. Plat for Horn and Harrison.
 E. 1/2 N.W. cor for Hudson Harrison. Plat filed for H. Harrison.
 (Ketchum C.S.)

Section 15 Township 17 North, Range 4 West.



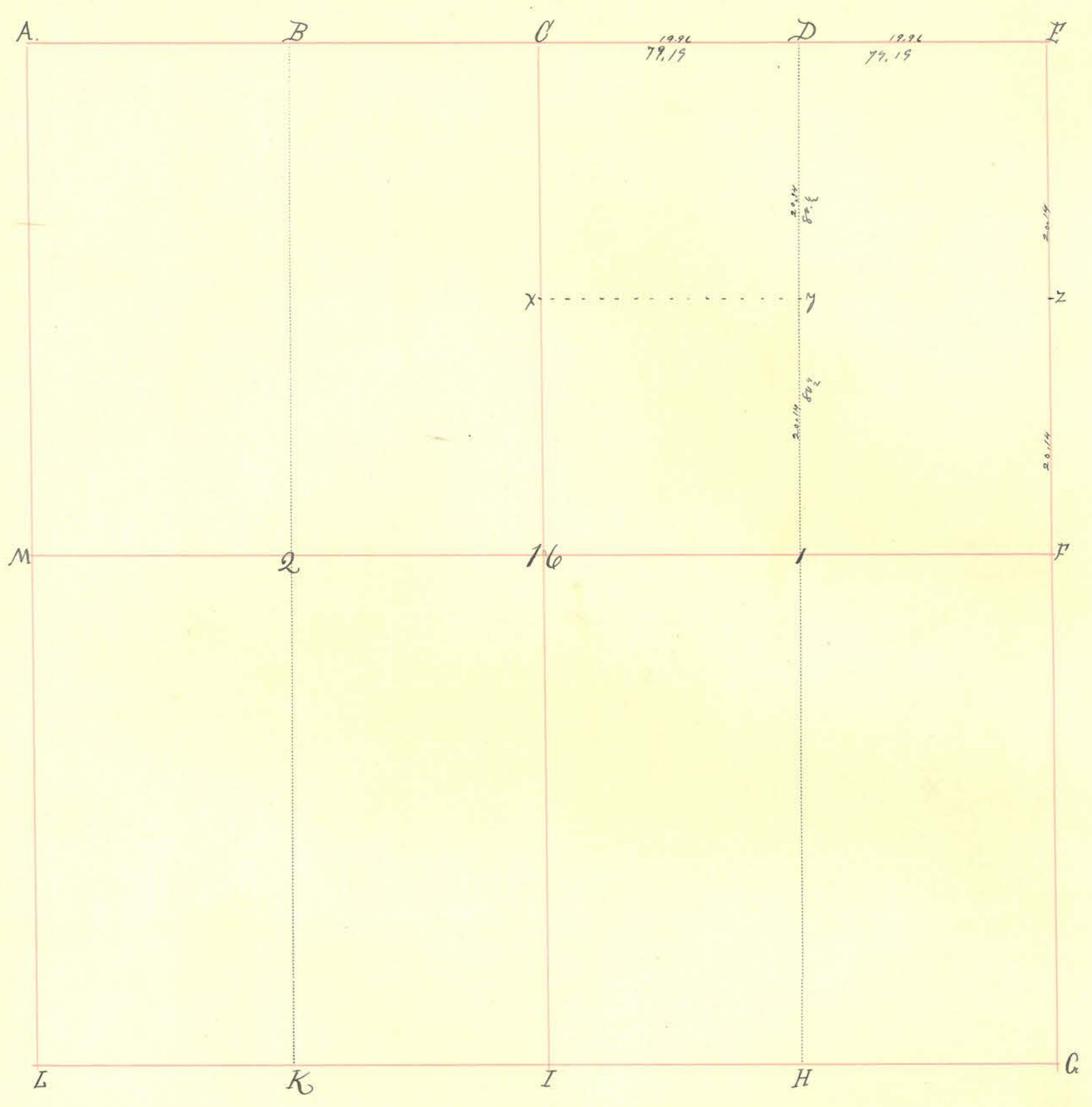
INDEX.	CORNERS.	SIZE.	MARKS.	WITNESSES.	SIZE.	DIRECTION.	DISTANCE.	MARKS.
A.								
B.								
C.								
D.				Black Walnut.	26"	S. 58° E.	20.	
E.				Beech.	28"	S. 44° W.	31.	
F.								
G.								
H.								
I.	STONE			5 1/2' - 38. K.M. LAURIMORE - C.S.		Center of Rd.		
K.				G. FITZPATRICK Asst.				
L.								
M.								
15.								
1.				Sugar.	14"	S. 1° W.	31.	
2.				White Walnut.	26"	N. 32° W.	31.	
				Beech.	14"	S. 6° E.	14.	
				Hickory	24"	N. 30° W.	42.	Back.

Section 15 Township 17 North, Range 4 West.

INDEX.	CORNERS.	SIZE.	MARKS.	WITNESSES.	SIZE.	DIRECTION.	DISTANCE.	MARKS.
--------	----------	-------	--------	------------	-------	------------	-----------	--------

Surveyed May 23rd 1892.
 E 1/2 of N.E. qr for Mr Jacob. Ashtunum. W 1/2 for John Kuey
 Jr. S.E. qr for Grant Kuey sen. W 1/2 of S.W. qr for Peter Warbillion. E 1/2 for Richard
 Bourke.
 Plat filed for Ashtunum Bourke and Warbillion.
 L. Hitchcock CS }

Section 16 Township 17 North, Range 4 West.



INDEX.	CORNERS.	SIZE.	MARKS.	WITNESSES.	SIZE.	DIRECTION.	DISTANCE.	MARKS.
A.	Stone							
B.	Stone							
C.	Stone							
D.	Stone							
E.	Stone							
F.	Stone							
G.								
H.								
I.								
K.								
L.								
M.								
16.	S. Elm							
1.	Stone							
2.								

Stone at D is not correct in SW of true corner.

Bench

30

S 55 W

39 1/2

Section 17 Township 17 North, Range 4 West.

INDEX.	CORNERS.	SIZE.	MARKS.	WITNESSES.	SIZE.	DIRECTION.	DISTANCE.	MARKS.
--------	----------	-------	--------	------------	-------	------------	-----------	--------

State of Indiana }
 County of Montgomery } S.S.
 Survey in S. W. 1/4 Sec. 17-17-4 for Charles Service, April 7, 1892

E. A. Cunningham }
 Lewis M. Browning } chairmen duly sworn

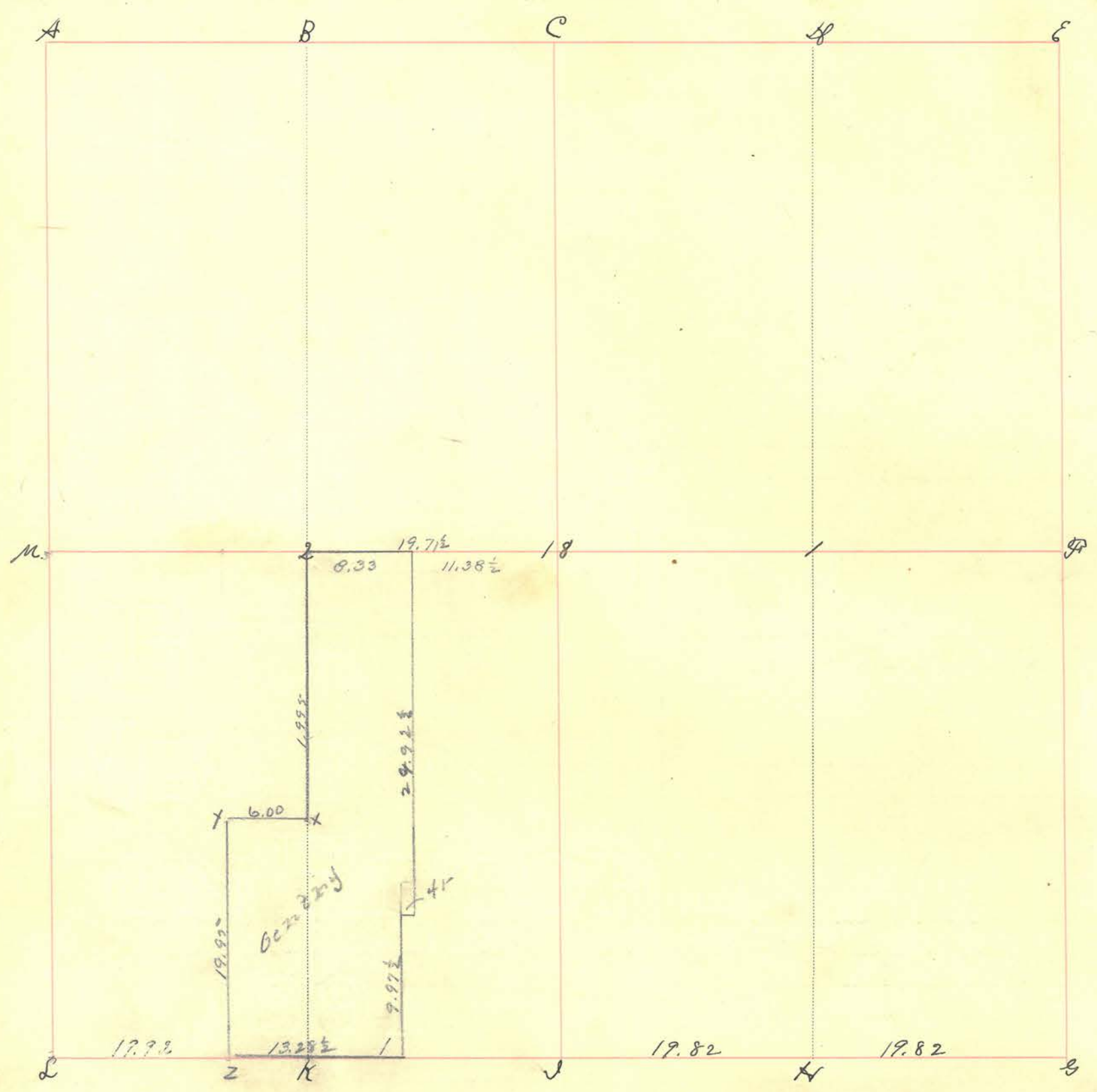
Stones at 'I' and 'K'. West from Stone at 'I' 19.95 chains to stone at 'K'
 at 'L' stone blue 20x15x12 ^{var. 3°15' E} _{to mark} 10 bearing true near.

Thence North from 'L' var 3°50' E. 14.75 chains, thence North 4.75 chains, Charles Service and
 Mrs. Frances corner in gravel road set stone Black Granite 12x9x6 unmarked. Thence East from
 said stone ^{and} parallel with south line of said quarter Sec. 16.87 1/2 chains (67 1/2 rods) set stone
 13x10x8 at Mrs. Frances N.E. corner.

William F. Hunt Surveyor M. Co. Clerk

C.S. of N. 1/4 of S.E. 1/4 to Daniel Cox.
 By Shuman. no Date.

Section 18 Township 17 North, Range 4 West.



1483
1328
1043

INDEX.	CORNERS.	SIZE.	MARKS.	WITNESSES.	SIZE.	DIRECTION.	DISTANCE.	MARKS.
A	STONE			MIDDLE OF FENCE. WEST SIDE OF ROAD GOES EAST.				
B				Buck.	12"	East	3	
C				" "	7"	S. W	42	
D				Sugar	20"	N. 66° E	48	
E	stone							
F	" yellow	14X12X6	marked					
G	STONE	SEE 1892 Survey						
H	Stone							
I	STONE			15 FT. SOUTH FENCE				
J								
K								
L								
M								
N								
O								
P								
Q								
R								
S								
T								
U								
V								
W								
X								
Y								
Z	stone							

Section 18 Township 17 North, Range 4 West.

INDEX.	CORNERS.	SIZE.	MARKS.	WITNESSES.	SIZE.	DIRECTION.	DISTANCE.	MARKS.
	State of Indiana } County of Montgomery } ss.			April 8-1892 Set corner at 'H' for David Vandelin E.A. Cunningham } Lewis M. Browning } chairmen duly sworn.				
				East from stone at 'G' 39.84 chains to stone at 'I' set stone at 'H' on straight line between G and I and at proportionate distances A Yellow Granite 14x12x6				

Wm. P. Hunt, Surveyor.

☞ Vide "Old Record"

State of Indiana } ss.
County of Montgomery } d.d. Aug 14 1911

Survey made for Browning, Bentley and Sanders to establish the
lines and corners of Z-Y-X-Z as on plat
Set stones at - X
" " at - Y
" " at - Z

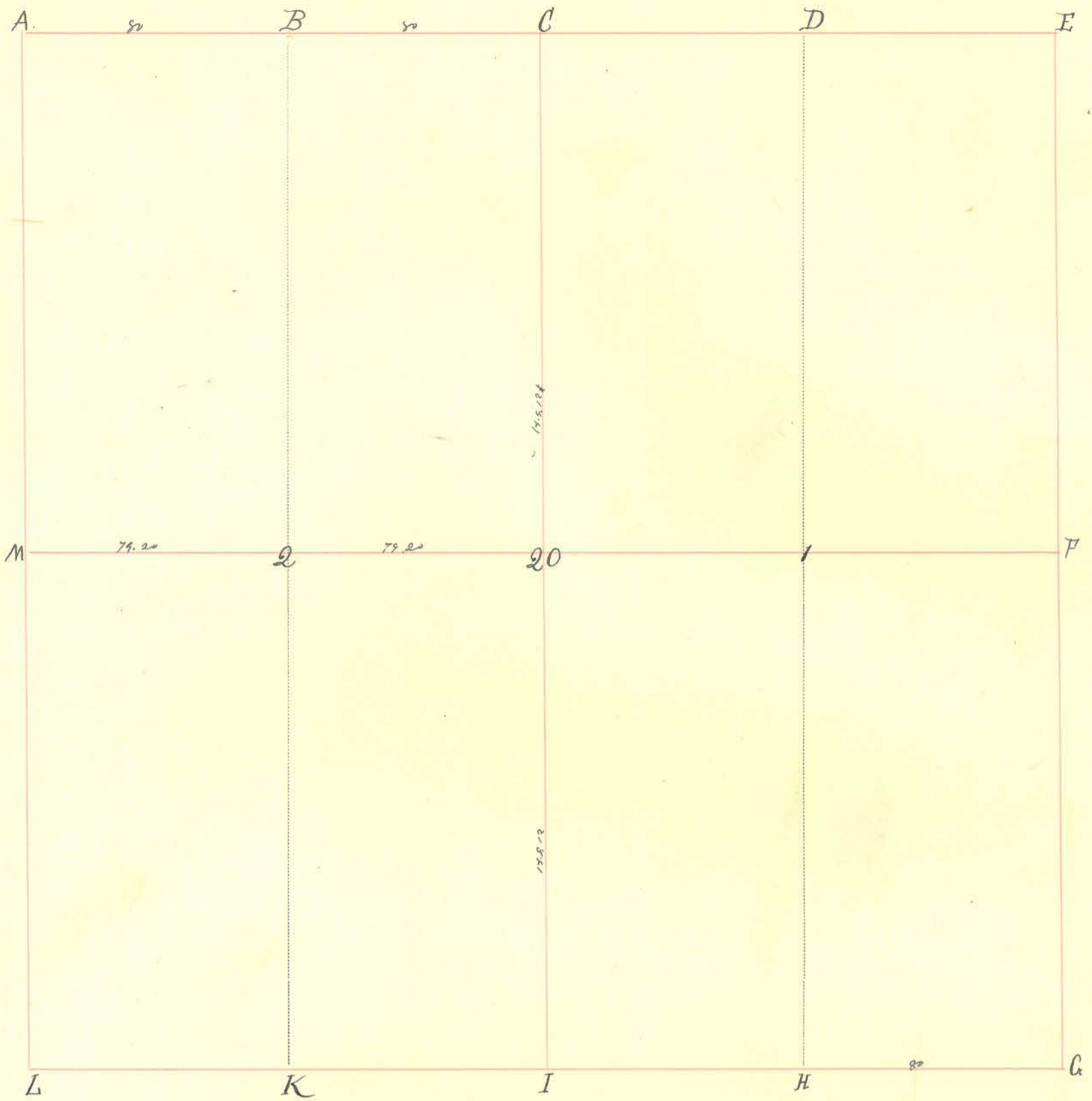
M. S. Rice Surveyor.

L. B. Shick }
W. S. Hardaway } chairmen

Section 19. Township 17. North, Range 4. West.

INDEX.	CORNERS.	SIZE.	MARKS.	WITNESSES.	SIZE.	DIRECTION.	DISTANCE.	MARKS.
	<p>Surveyed November 11th 1831. N.W. qr for W^m. Hedder. N.E. qr for Samuel Plinger. S.E. qr for David Van Cleave. S.W. qr for James Hedder. Plots filed. E division of E¹/₂ of N.E. qr for Malvina Pollinger (widow of David Pollinger) H. Johnson. E. McCord & A. Gilliland. Commissioners under authority of Probate Court.</p>							

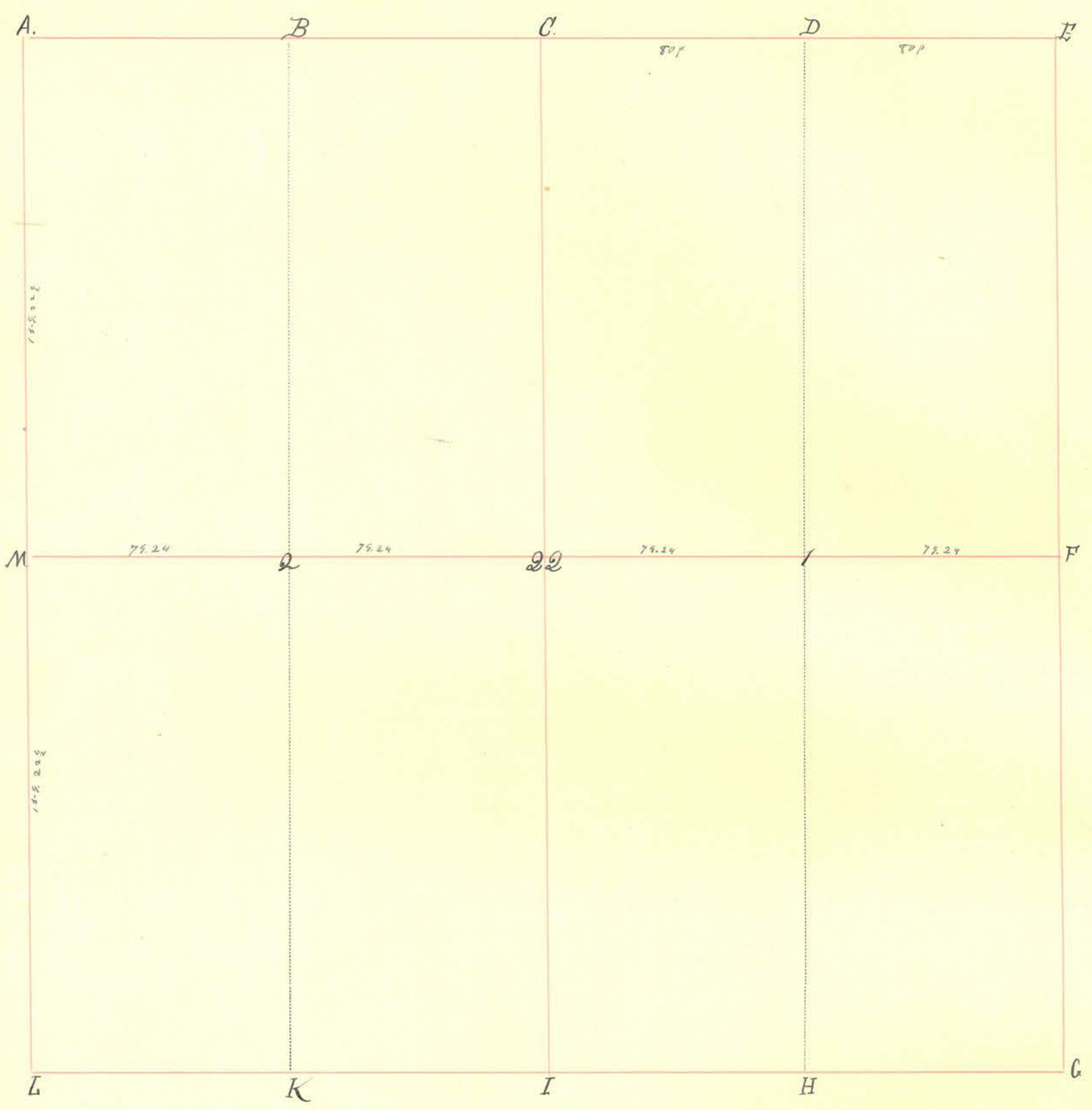
Section 20 Township 17 North, Range 4 West.



INDEX.	CORNERS.	SIZE.	MARKS.	WITNESSES.	SIZE.	DIRECTION.	DISTANCE.	MARKS.
A.	Stone.							
B.	Stone.							
C.	Stone.							
D.								
E.								
F.								
G.								
H.								
I.								
K.								
L.	Stone in Grencaelli Road.							
M.	Stone in Grencaelli Road.							
Q.	Stake.							
1								
2.	Stake.			Ash " "	2" 5"	S. 80° W. N. 30° E.	28 20 1/2	

Round Dec. 13th 1863. Buck CS.

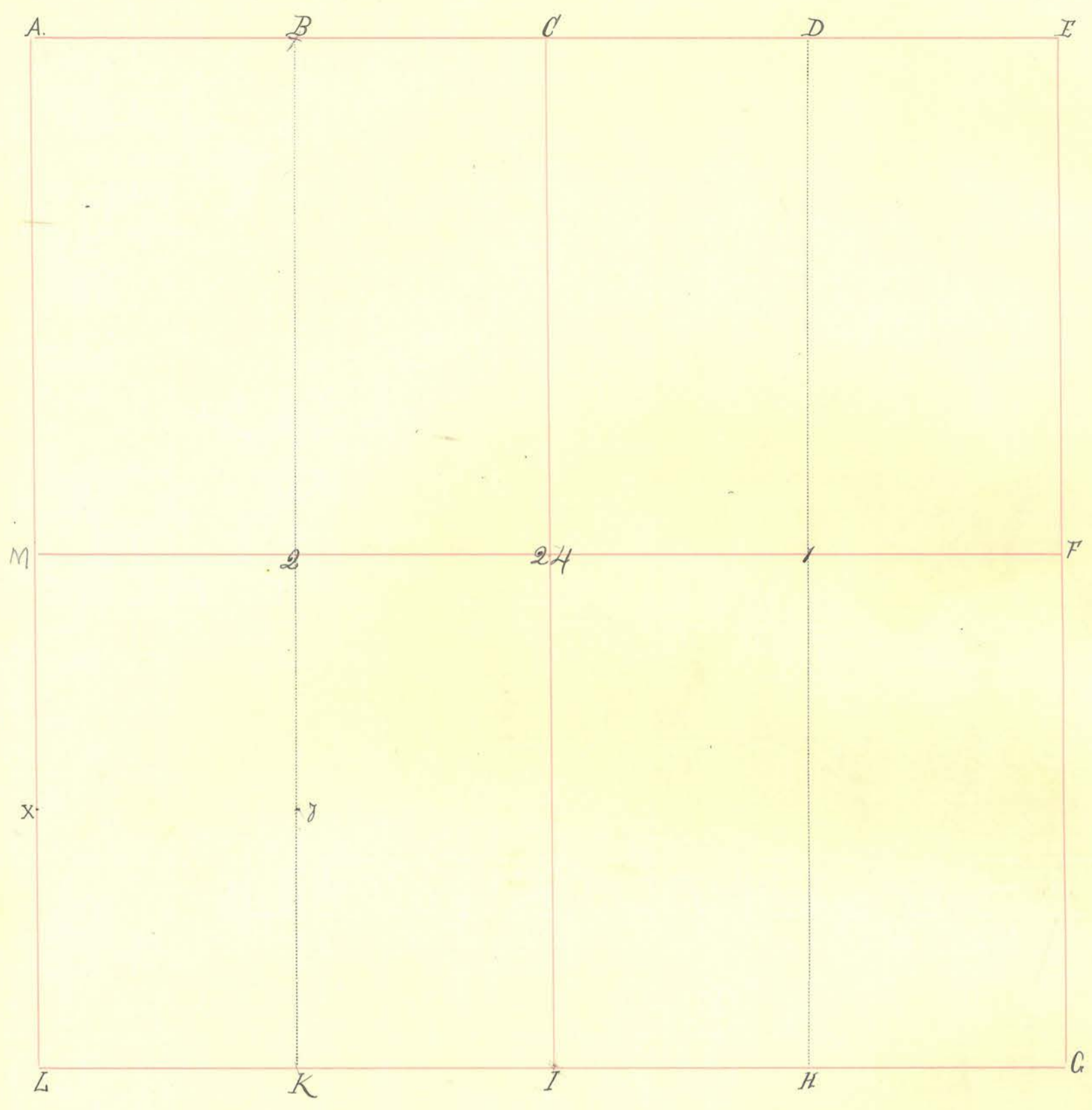
Section 22 Township 17 North, Range 4 West.



INDEX.	CORNERS.	SIZE.	MARKS.	WITNESSES.	SIZE.	DIRECTION.	DISTANCE.	MARKS.
A.	Stone							
B.								
C.	Stone							
D.	Stone							
E.	Stone							
F.	Stone							
G.								
H.								
I.	Stone +							
K.								
L.								
M.	Post							
22.	Stone							
1.								
2.	Stone							

(Nitchum 051)

Section 24 Township 17 North, Range 4 West.

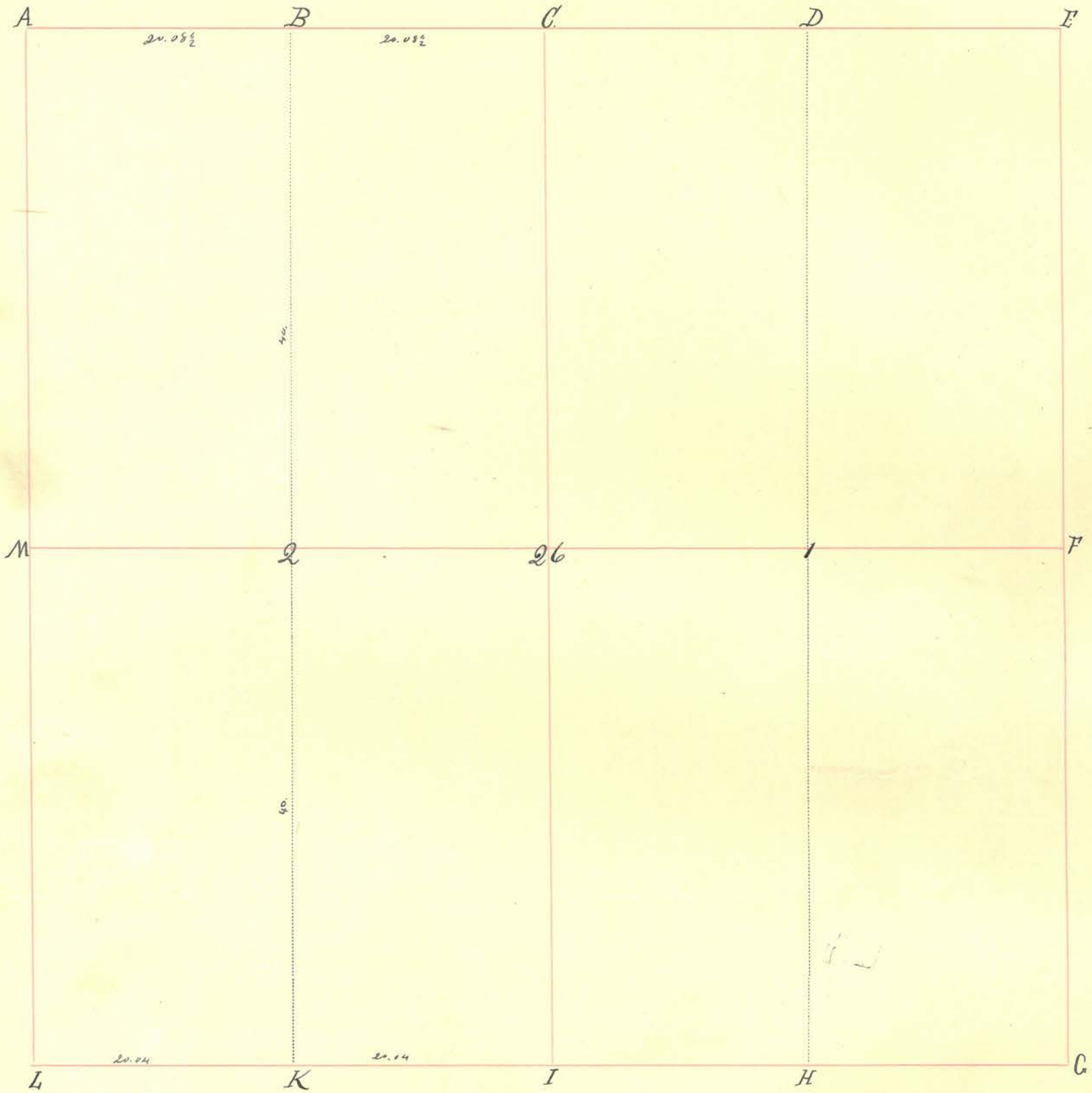


INDEX.	CORNERS.	SIZE.	MARKS.	WITNESSES.	SIZE.	DIRECTION.	DISTANCE.	MARKS.
A.								
B.								
C.								
D.								
E.								
F.								
G.								
H.				White Oak	36"	N. 39° W.	27	
I.								
K.								
L.								
M.								
24.				Ash. White Oak	8" 24"	N. 24½° E. S. 10° E.	21 46.	
1.				Ash.	8"	S. 17½° E.	40.	
2.				Hickory. Elm.	14" 8"	N. 60° W. S. 11° E.	24. 15.	

Section 24 Township 17 North, Range 4 West.

INDEX.	CORNERS.	SIZE.	MARKS.	WITNESSES.	SIZE.	DIRECTION.	DISTANCE.	MARKS.
x y				Buckeye Elm. Sugar White Oak	12" 16" 18" 30"	S. 27° E. N. 6° W. S. 33° E. N. 66° W.	19. - -	(Buck)
N 3/4 of W 1/2 of S. 1/4 of Sec. 24 for Charles Keeney.				Plat filed for Keeney. (Stephen C.S)				

Section 26 Township 17 North, Range 4 West.



INDEX.	CORNERS.	SIZE.	MARKS.	WITNESSES.	SIZE.	DIRECTION.	DISTANCE.	MARKS.
A								
B				White Oak	20"	N. 28° W.	7 1/2	
C				Elm.	12"	S. 8° W.	30.	
D								
E								
F								
G								
H								
I								
K				Sugar	18"	N. 21° E.	40 1/2	
L				Elm.	17"	S. 78° E.	44 1/2	
M								
26	Stone							
1								
2				Hickory	14"	S. 72° E.	14.	
				Red Oak	5"	N. 40° E.	8.	(Druck)

Section 26 Township 17 North, Range 4 West.

INDEX.	CORNERS.	SIZE.	MARKS.	WITNESSES.	SIZE.	DIRECTION.	DISTANCE.	MARKS.
--------	----------	-------	--------	------------	-------	------------	-----------	--------

Surveyed May 29th 1832.
S.E. qr. and E $\frac{1}{2}$ of S.W. for Abraham Boyd. N.E. and
E $\frac{1}{2}$ of N.W. qr. Samuel Boilla. W $\frac{1}{2}$ of S.W. qr. for John Myers.
3 Plats filed

Section 27 Township 17 North, Range 4 West.

INDEX.	CORNERS.	SIZE.	MARKS.	WITNESSES.	SIZE.	DIRECTION.	DISTANCE.	MARKS.
--------	----------	-------	--------	------------	-------	------------	-----------	--------

March 3rd 1914 - Surveyed a part of the NE^{1/4} of Sec. 27 - T17N-R4W
 and a part of the NW^{1/4} SE^{1/4} 27 " "

for Dr. W. H. Wheeler
 Survey made to determine distances and
 acreage only inside of fences.

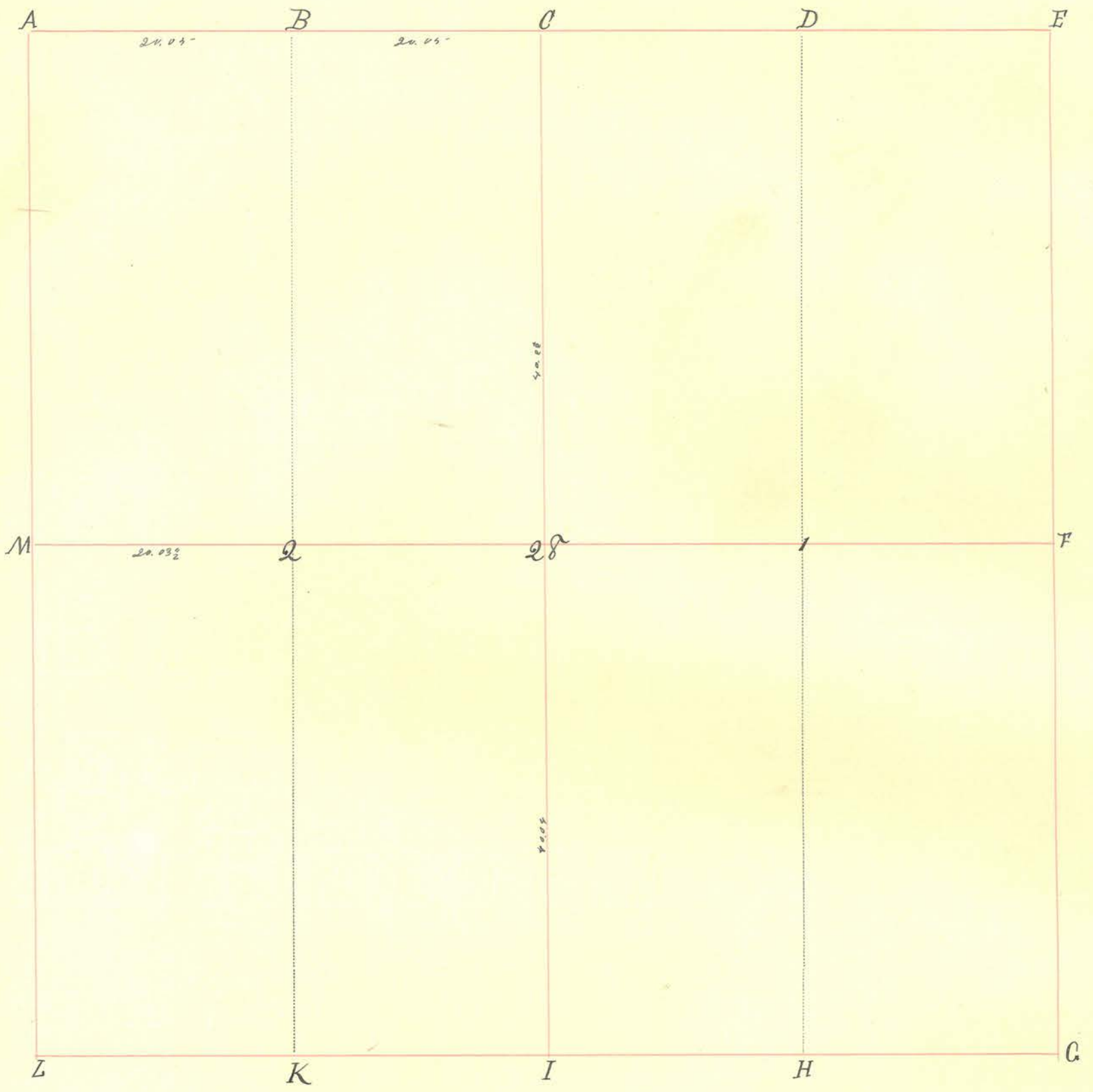
M. L. Wheeler }
 W. S. Harding } Chairman

A part of the northwest quarter of section 27, township 17, north, range 4 west, described as follows: Beginning at a point 5.36 chains east of the southwest corner of said northwest quarter, and running thence east 35.14 chains to the southeast corner of said quarter, thence north 20.425 chains to a post, thence west 17.84 chains to a post, thence north 19.92 chains to the north line of said section 27, thence west on said north line 17 chains to a point 5.36 chains east of the northwest corner of said quarter section, thence south 40.31 chains to place of beginning, containing 104.33 acres, more or less.

The west line of the above described tract being 5.36 chains east of and parallel with the west line of above described quarter section, and 25 feet west of barn.

Also, a part of the northwest quarter of the southeast quarter of section 27, township 17 north, range 4 west, described as follows: Beginning at the northwest corner of said northwest quarter of southeast quarter, and running thence east 14.50 chains, thence south 17° east 4.90 chains to a point in the middle of road, thence north 83° west 5 chains to point in center of road, thence north 80° west 10.69 chains to west line of said quarter, thence north 1.95 chains to place of beginning, containing 5.07 acres, more or less.

Section 28 Township 17 North, Range 4 West.



INDEX.	CORNERS.	SIZE.	MARKS.	WITNESSES.	SIZE.	DIRECTION.	DISTANCE.	MARKS.
A.								
B.								
C.								
D.								
E.								
F.								
G.								
H.								
I.								
K.								
L.								
M.								
28.								
1.								
2.								
				Red Oak. Hickory.	12" 12"	S. 5° W. S. 83° E.	18. 26.	
				Buck. Sugar.	4" -	N. 38° E. S. 23° W.	12. 20.	
				Sugar. Hickory	20" 10"	East N. 46° W.	3 28½	(Buck)

Section 28 Township 17 North, Range 4 West.

INDEX.	CORNERS.	SIZE.	MARKS.	WITNESSES.	SIZE.	DIRECTION.	DISTANCE.	MARKS.
				<p>Surveyed August 31st 1832.</p> <p>N. 3/4 N.W. qr for John A. Lord. E. 3/4 for Henry Gooden.</p> <p>S.W. qr for Robert Hazlett. N.W. qr for William Swank. S.E. qr for Jacob Swank.</p> <p>All Plats filed and 2 delivered to Swanks.</p> <p style="text-align: right;">Stephen C. S. M.C.</p>				

Section 29 Township 17 North, Range 4 West.

INDEX.	CORNERS.	SIZE.	MARKS.	WITNESSES.	SIZE.	DIRECTION.	DISTANCE.	MARKS.
--------	----------	-------	--------	------------	-------	------------	-----------	--------

April 30th 1832.

NE 1/4 for Frank Iron and E 1/2 of S.E. 1/4 and W 1/2 for John Crawford. W 1/2 of Sec for Wm. Frame.
 Plats filed for Iron and Crawford. Aug 14th Plat filed for Frame.
 (Ketchum C.S.M.C.)

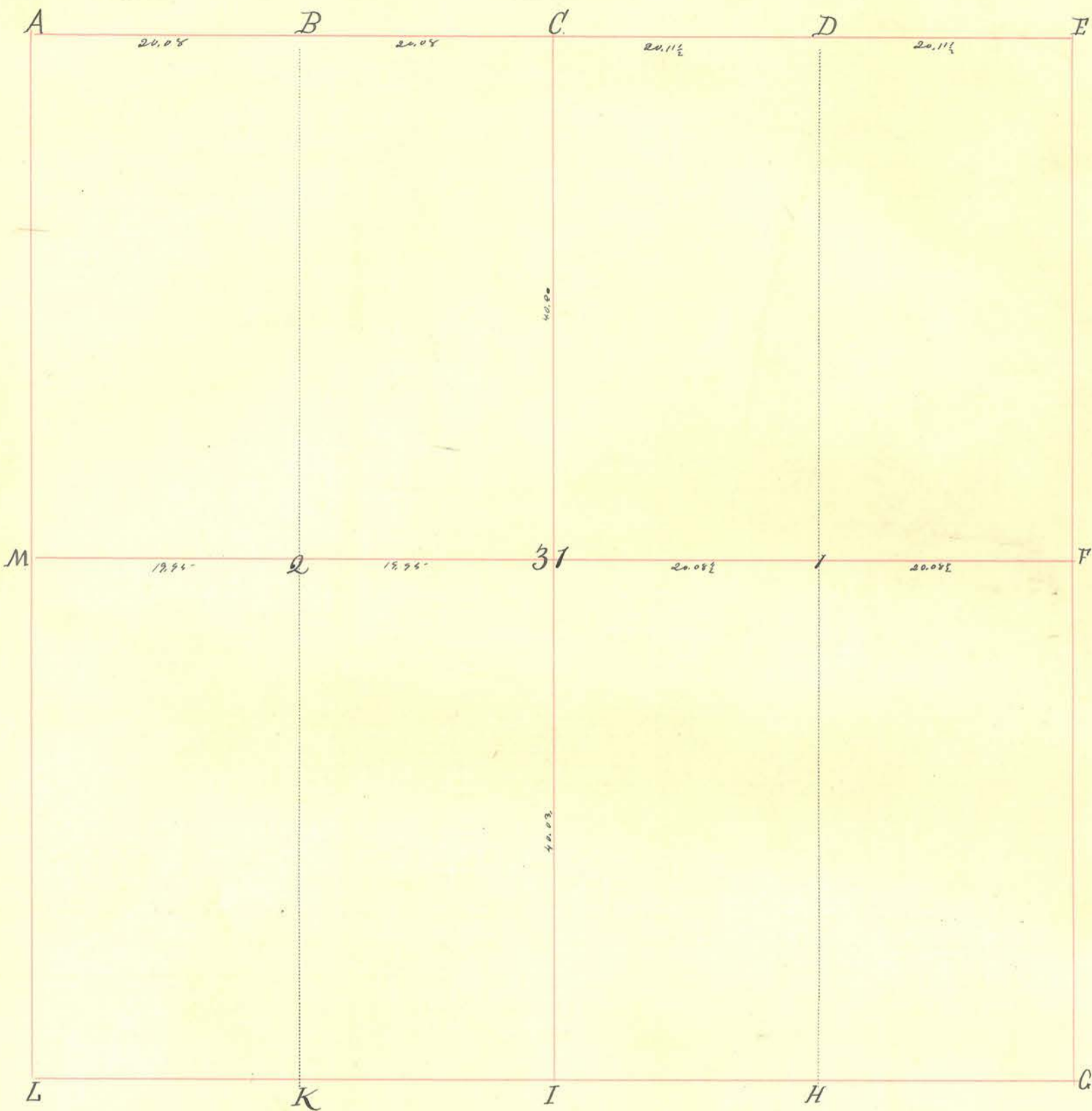
7	Iron Pin							
5	Iron Pin							
7	Iron Pin			13 Walnut	7	N 18 3/4 W	31 3/8	
29	Stone			6 Ash	12	N 58 3/4 W	43 3/8	

Jan 8th 1919

Survey made of the NW 1/4 of Sec 29 to determine the number of acres. from A. to M - distance 40.17 1/2 chains, distance from M to 79 - 40.10 chains, distance from 29 to C. 40.17 chains, distance from C to A 40.11 chains, containing 160.15+ acres.

William S. Harding S. M. Co.
 Sam D. Squires Assistant Chainman.

Section 37 Township 17 North, Range 4 West.



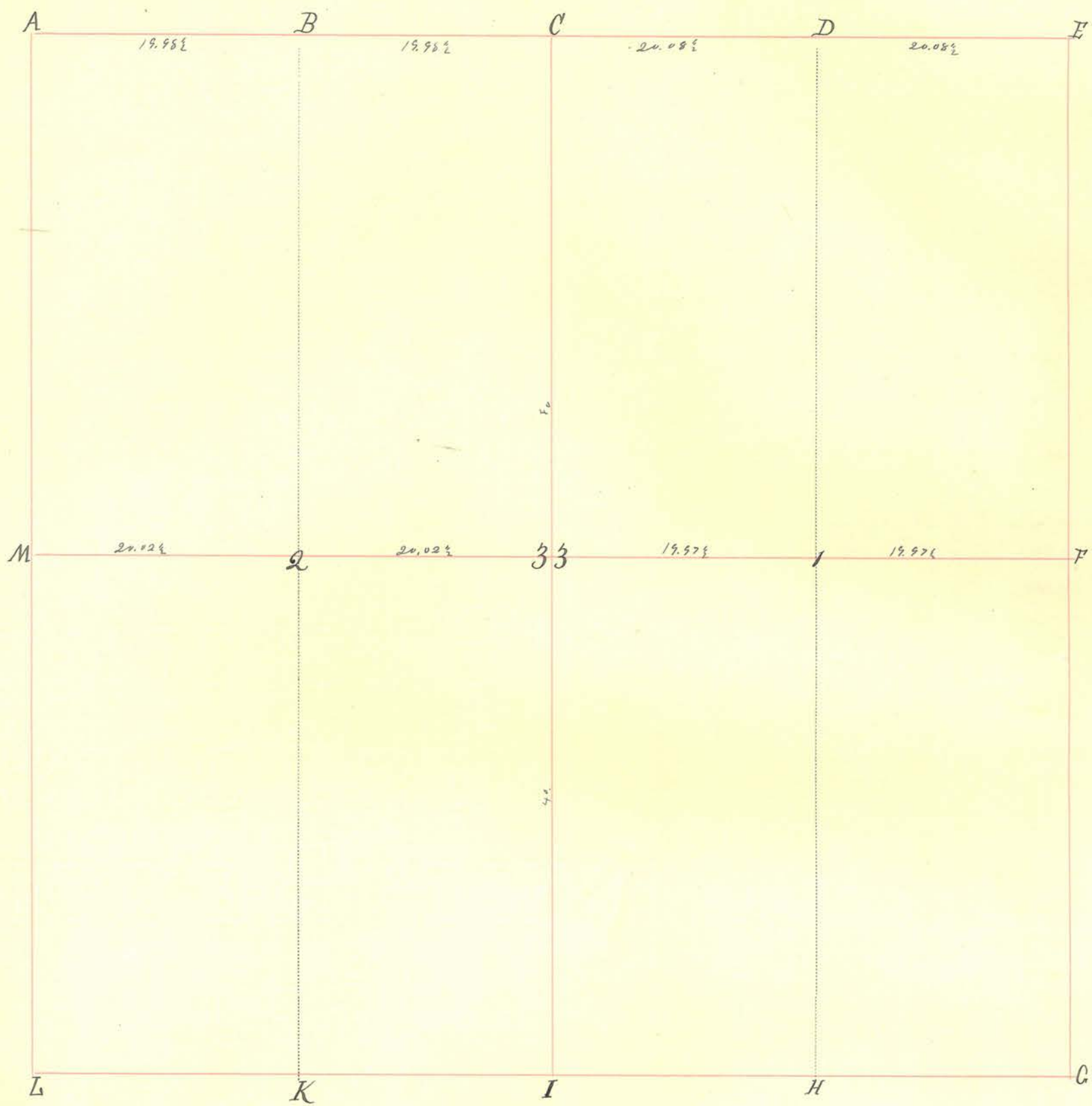
INDEX.	CORNERS.	SIZE.	MARKS.	WITNESSES.	SIZE.	DIRECTION.	DISTANCE.	MARKS.
A.				Red Oak	40"	N. 13° E.	23	
B.				Sugar	14"	N. 70° W.	13 1/2	
C.				Buck	10"	34 E.	17	
D.				Buck	24"	N. 55 E.	7	
E.				Hickory	18"	East	8	
F.				elm.		S. 43° W.	24	
G.								
H.								
I.								
K.								
L.								
M.				Glickory	9"	N. 61° E.	19.	
37				Spruce	14"	S. 82° W.	11.	
1.				Buck	3"	N. 22° E.	7.	
2.				Spruce	10"	S. 86 1/2° W.	23.	
				Buck	24"	S. 69° W.	13.	
				Buck	9"	N. 87 1/2° E.	23.	
				Buck	1"	S. 36° W.	69 or 6	
				Ironwood	6"	S. 9° E.	19.	

(Backs)

Section 31. Township 17. North, Range 4. West.

INDEX.	CORNERS.	SIZE.	MARKS.	WITNESSES.	SIZE.	DIRECTION.	DISTANCE.	MARKS.
				<p>Surveyed September 10th 1832. Wgr for Charles Nicholas. E³/₄ of N. Wgr. for Jacob Schuck. W³/₄ for John Doumen. W³/₄ of N. Wgr for Robert Baruhill. and E³/₄ for Benjamin Leaman. 4. Plats filed. (Maryhem C.S.)</p>				

Section 33 Township 17 North, Range 4 West.



INDEX.	CORNERS.	SIZE.	MARKS.	WITNESSES.	SIZE.	DIRECTION.	DISTANCE.	MARKS.
A.								
B.				Ironwood.	10"	N. 71° W.	16.	
C.				Beech.	14"	S. 66° E.	23 1/2	
D.				Sugar.	24"	S. 2° W.	24.	
E.				" "	15"	N. 28° E.	28.	
F.								
G.								
H.								
I.								
K.								
L.								
M.								
33.				White Walnut	12"	S. 61 1/2° W.	26	
1.				Elm.	17"	S. 67 1/2° E.	27	
2.				White Oak.	11"	S. 62 1/2° W.	14.	
				Beech.	12"	S. 66° E.	32.	
				Beech.	14"	S. 1° E.	33.	
				Sugar	15"	N. 10 1/2° E.	38.	

(Book P.S.)

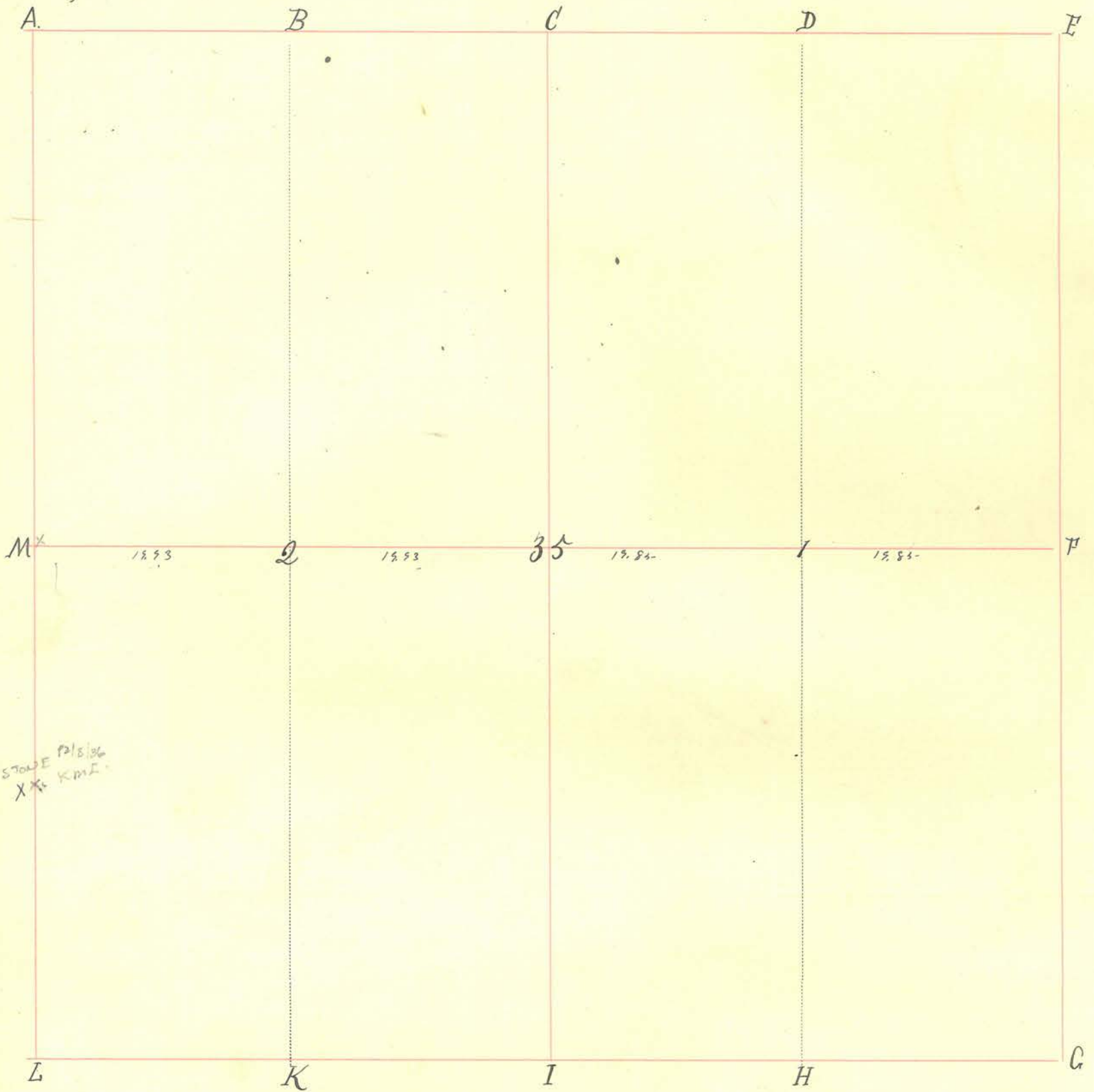
Section 33. Township 17. North, Range 4. West.

INDEX.	CORNERS.	SIZE.	MARKS.	WITNESSES.	SIZE.	DIRECTION.	DISTANCE.	MARKS.	
				<p>August 31st 1832.</p> <p>W¹/₂ of N.W. qr for Joseph Coline. E¹/₂ and W¹/₂ of N.E. for Abraham</p> <p>Ashby. E¹/₂ of N.E. for John Swank. and S.W. qr for John Springton.</p> <p>4. Plats filed.</p>					(Attest) C.S.

Section 34 Township 17 North, Range 4 West.

INDEX.	CORNERS.	SIZE.	MARKS.	WITNESSES.	SIZE.	DIRECTION.	DISTANCE.	MARKS.
<i>R</i>	<i>Stow</i>							

Section 35 Township 17 North, Range 4 West.



INDEX.	CORNERS.	SIZE.	MARKS.	WITNESSES.	SIZE.	DIRECTION.	DISTANCE.	MARKS.
A.								
B.								
C.								
D.								
E.								
F.								
G.								
H.								
I.								
K.								
L.								
M.	Stone			DK 12/8/36 K.M.S.				
35.								
1.								
2.								
X	STONE			12/8/36 K.M.S.				

Section 3rd Township 17 North, Range 4 West.

INDEX.	CORNERS.	SIZE.	MARKS.	WITNESSES.	SIZE.	DIRECTION.	DISTANCE.	MARKS.
				<p data-bbox="564 302 976 346">November 14th 1831.</p> <p data-bbox="231 355 1916 464">James Egerton. No corners put ad. for corner see Sec. 26.</p> <p data-bbox="1289 449 1511 502">Plats filed</p> <p data-bbox="1613 449 1887 502">(Ketchum.)</p>				

