

← 1 mile to Road 234 →

New Ross Gravel Road

← Ladoga 4 miles

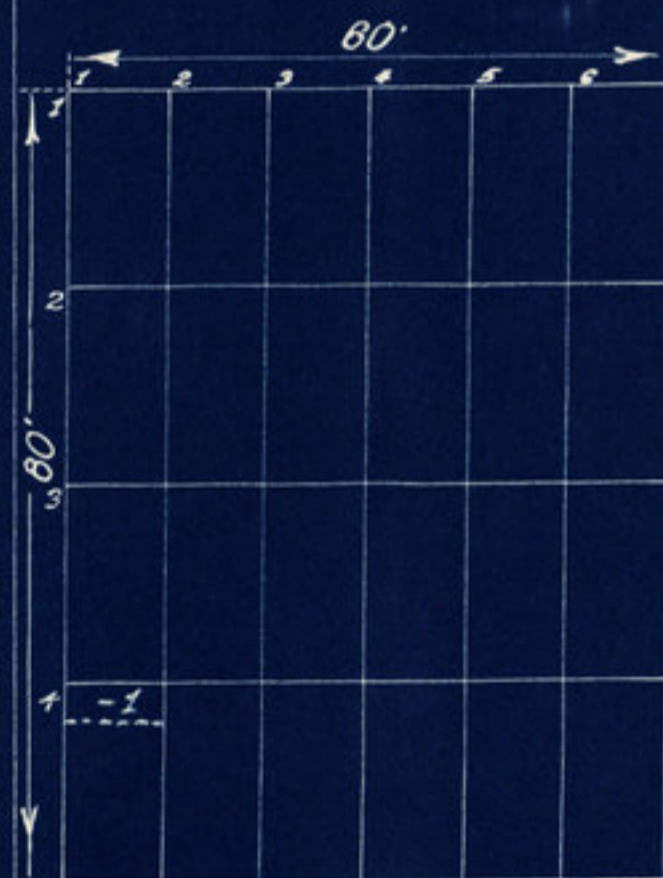
Jamestown 6 miles →

*Peffley Cemetery.  
Clark Twp. Montgomery County.  
Pt. N.W. 1/4, S.W. 1/4, Sec. 11, Twp 17N, 3W.  
Scale 20' - 1"  
Drawn 1940*



2 miles to Ladoga →

Ladoga-Roachdale Black-Top



← 1/4 mile →

← 1/4 mile to corner →

Bob Hicks Gravel Road

Haw Creek Road

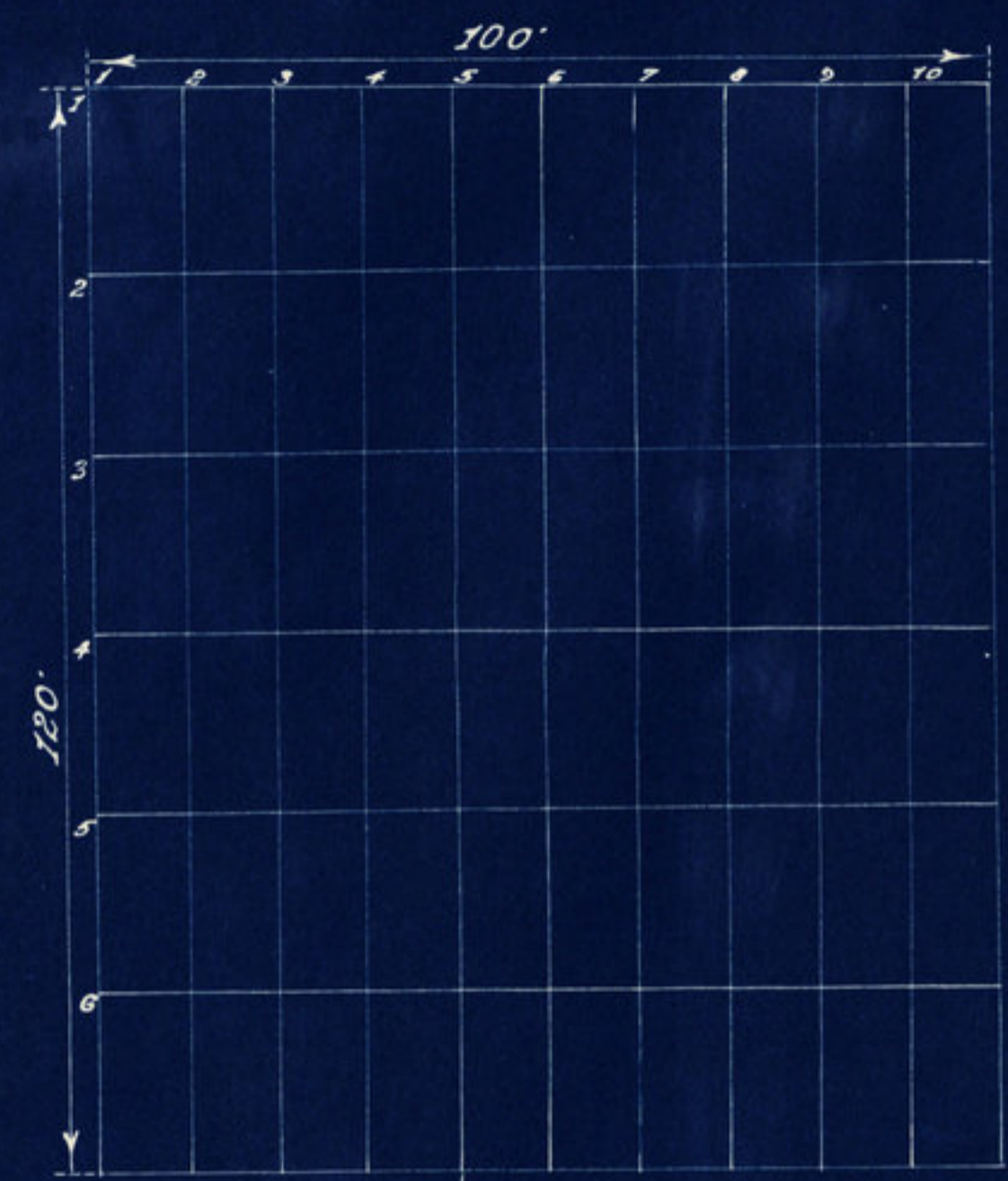
← 4 miles to Black-Top

*Bly Cemetery.  
Clark Twp. Montgomery County.  
Pt. N.E. 1/4, Sec. 34, Twp 17, R. 3.  
Scale 20' - 1"  
Drawn 1940*



Ladoga 2 miles

Ladoga - Roachdale Black-Top Road



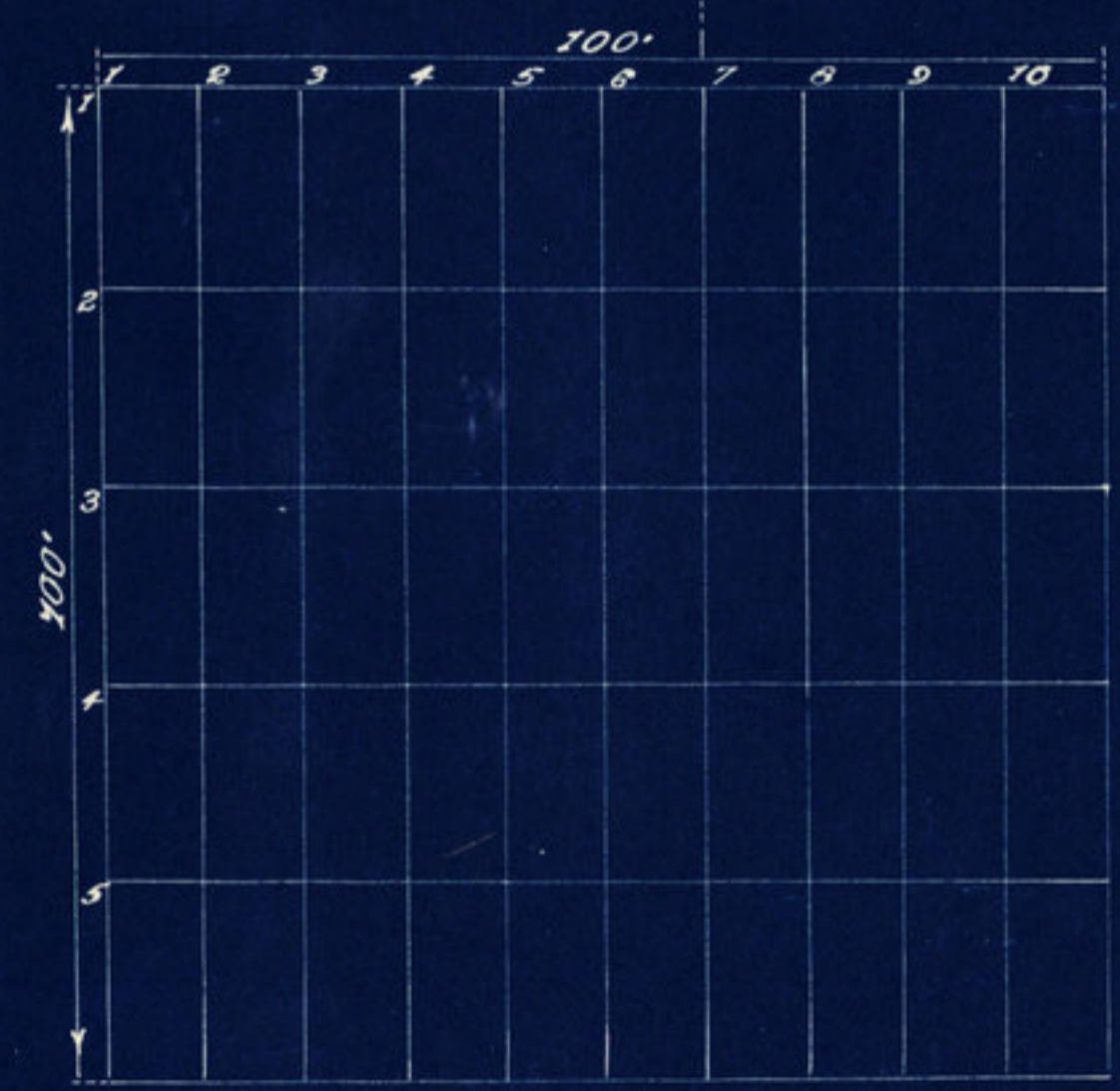
3 1/2 miles

Clark Cemetery.  
 Clark Twp. Montgomery County.  
 Pt. S.E. 1/4, S.E. 1/4, Sect. 26, T. 17N., R. 3W.  
 Scale 20'-1"  
 Drawn 1940.



Ladoga - Roachdale Black-Top Road Ladoga 2 miles

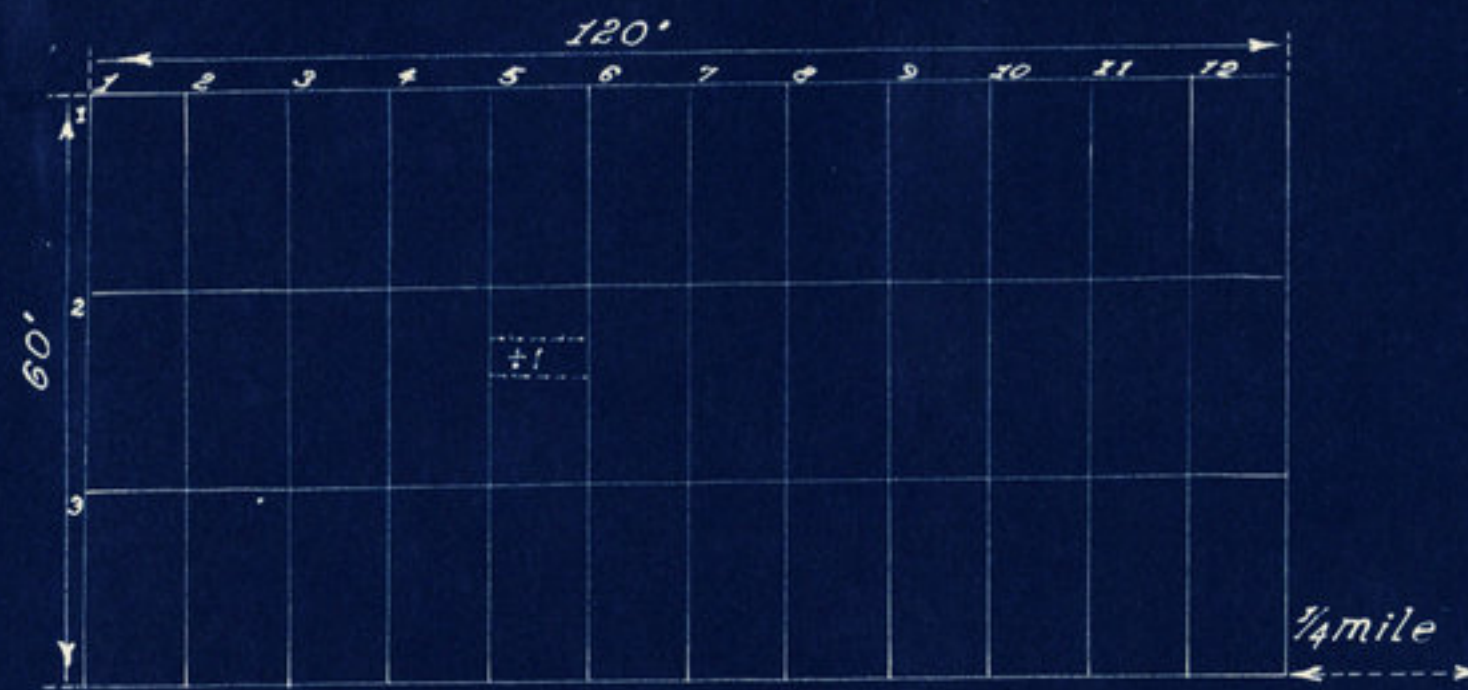
Black-Top 1 mile



Ford Cemetery.  
 Clark Twp. Montgomery County.  
 Pt. S.E. 1/4, N.W. 1/4, Sect. 32, T. 17N., R. 3W.  
 Scale 20'-1"  
 Drawn 1940.



Ladoga-North Salem Black-Top Road



Harshberger-Owens Gravel Road

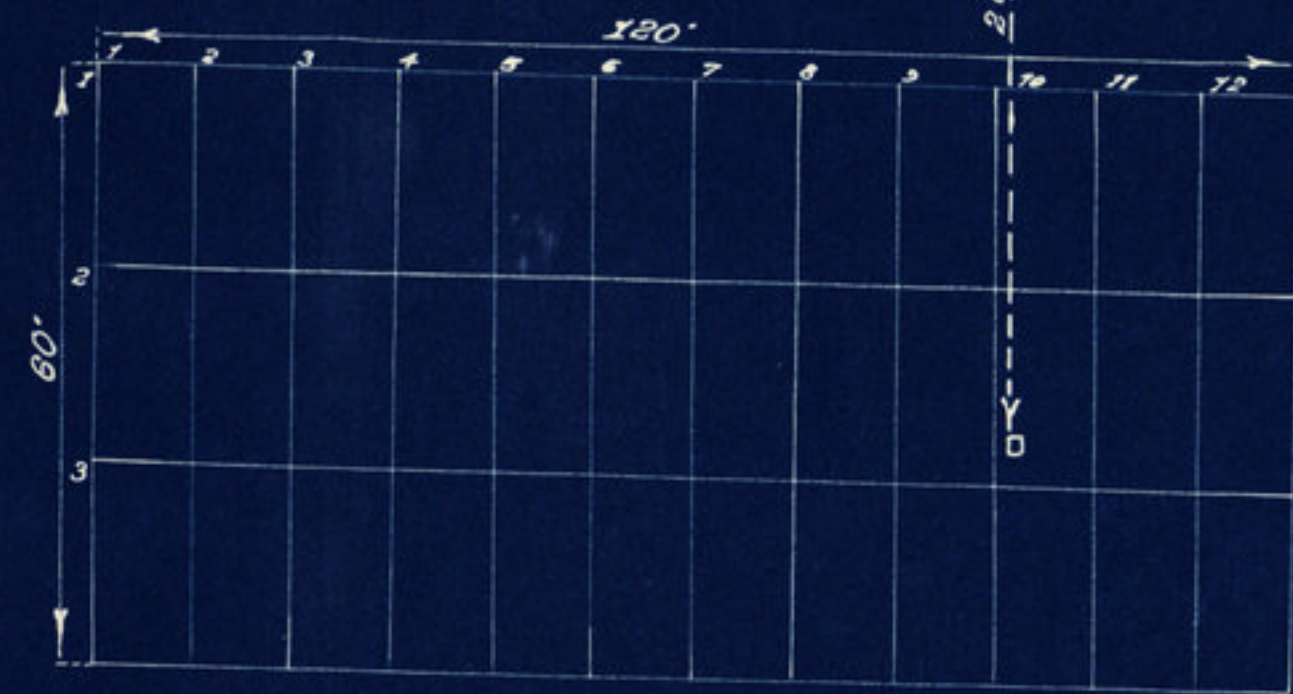
Owen Cemetery  
 Clark Twp. Montgomery County.  
 Pt. NE 1/4, Sect. 25, Twp 17N, R. 3W.  
 Scale 20'-1"  
 Drawn 1940



Ladoga 1 mile

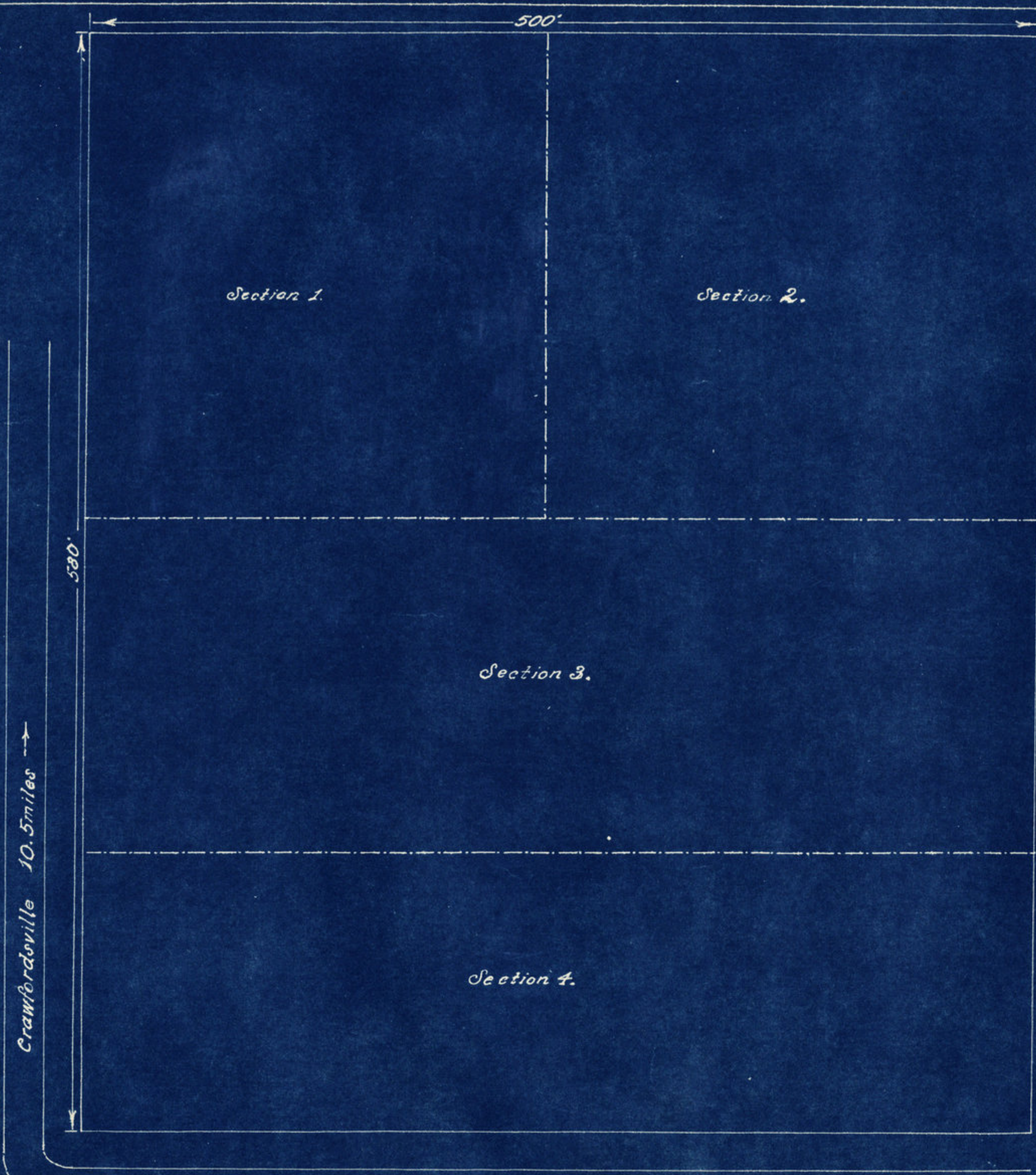
Ladoga-North Salem Black-Top Road

2.25 miles



Ladoga-Roachdale Black-Top Road

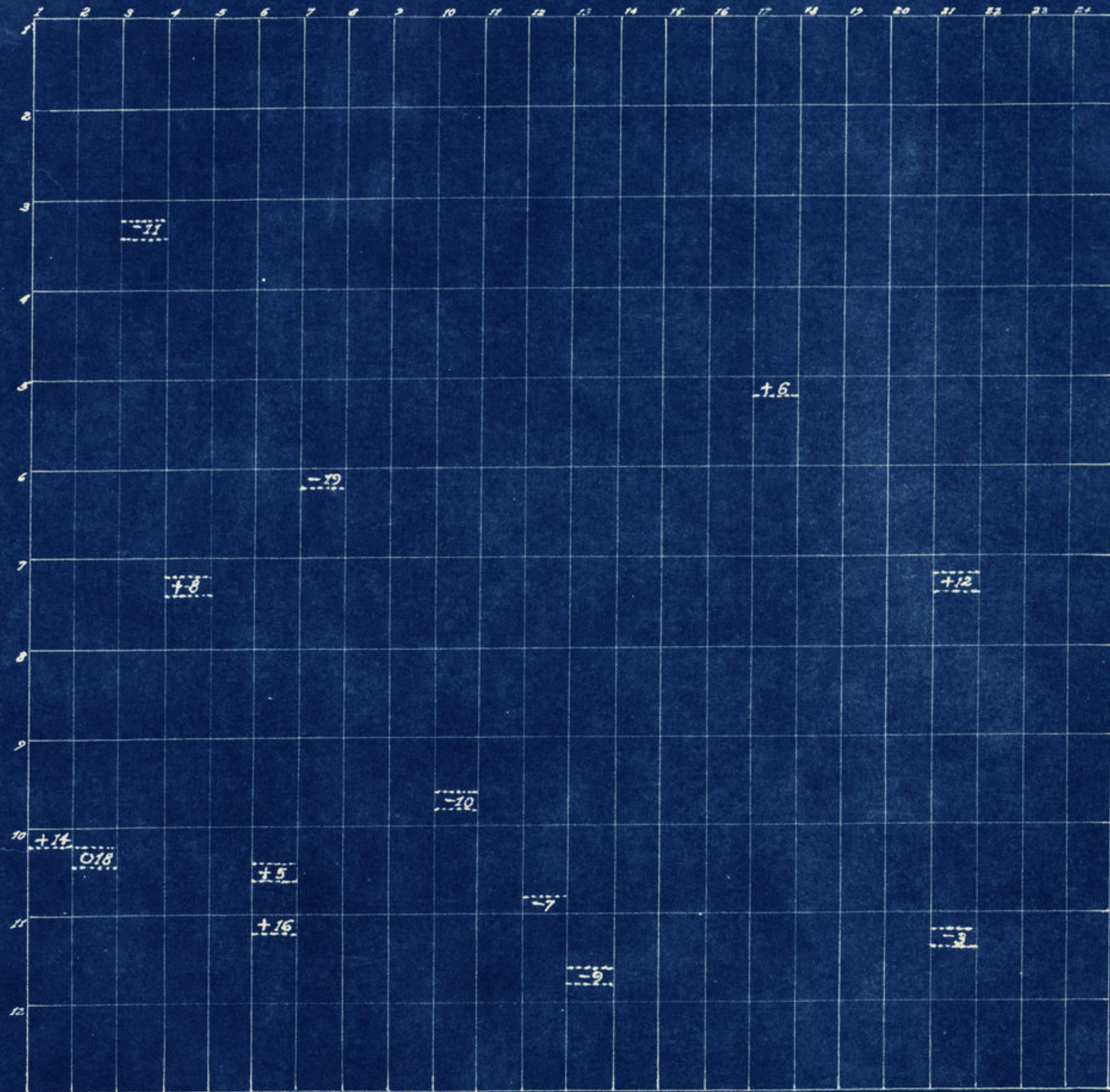
Harrison Cemetery.  
 Clark Twp. Montgomery County.  
 Pt. SW 1/4, NE 1/4, Sect. 28, T17N, R. 3W.  
 Scale 20'-1"  
 Drawn 1940.



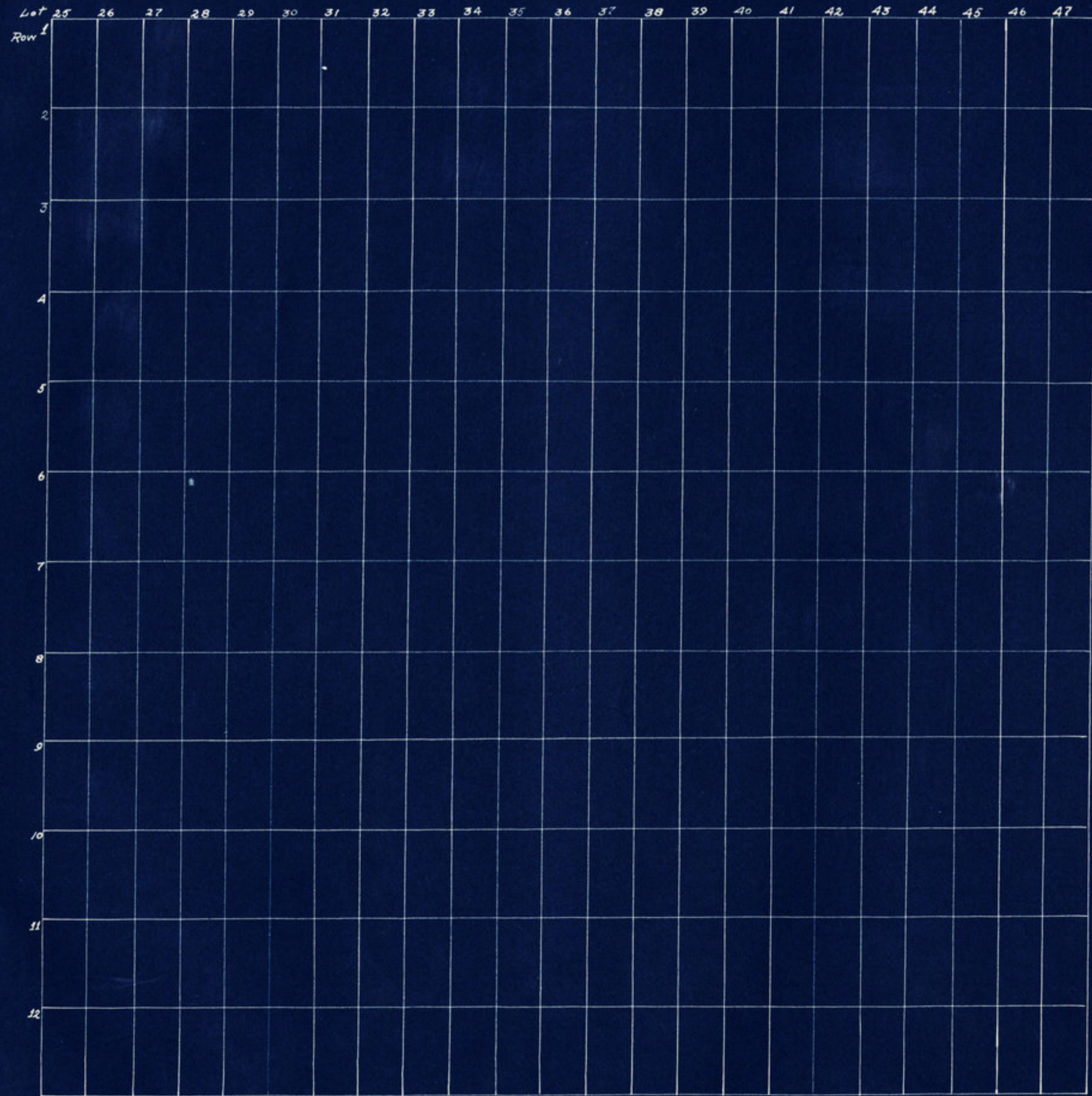
Crawfordsville 10.5 miles →

Ladoga-Crawfordsville Road

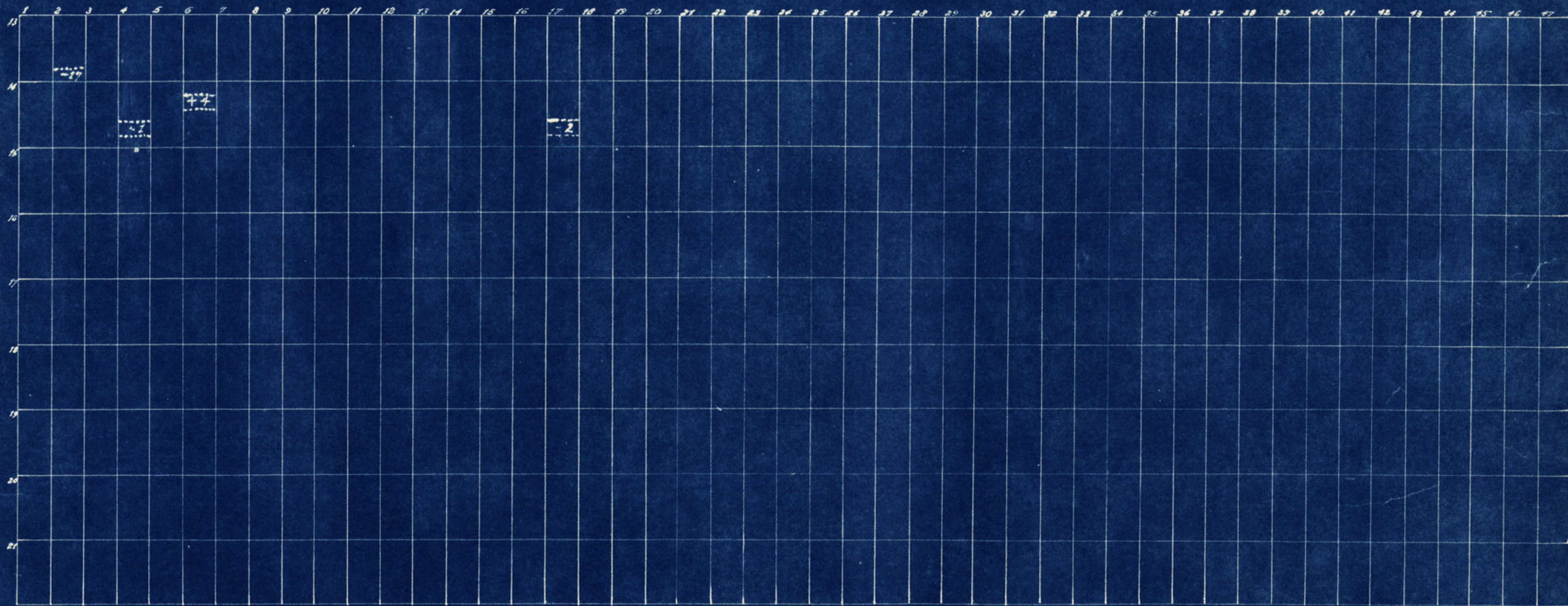
Harshbarger Cemetery.  
Clark Twp. Montgomery County.  
Pt. S.E. 1/4, N.W. 1/4, Sect. 6, T. 17, R. 3.  
Scale 40' = 1"  
Drawn 1940.  
Sheet 1 of 5.



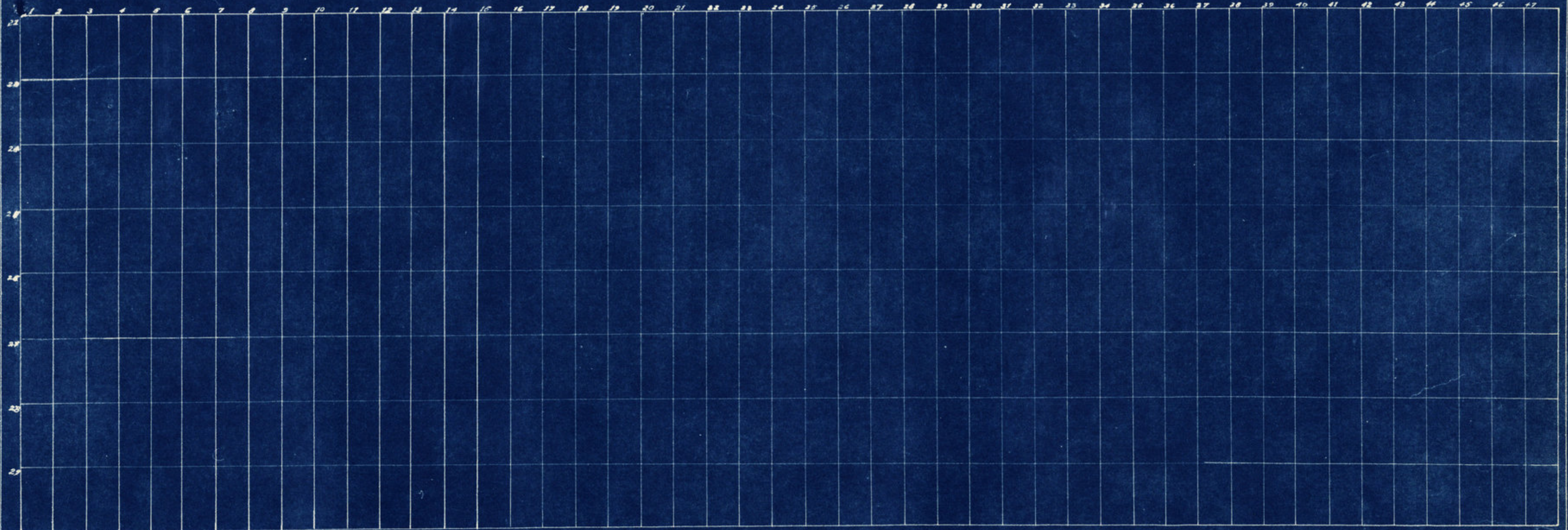
Harshbarger Cemetery.  
Section 1.  
Scale 20'-1"  
Drawn 1940.  
Sheet 2 of 5.



Harshbarger Cemetery  
Section 2.  
Scale 20'-1"  
Drawn 1940  
Sheet 3 of 5.

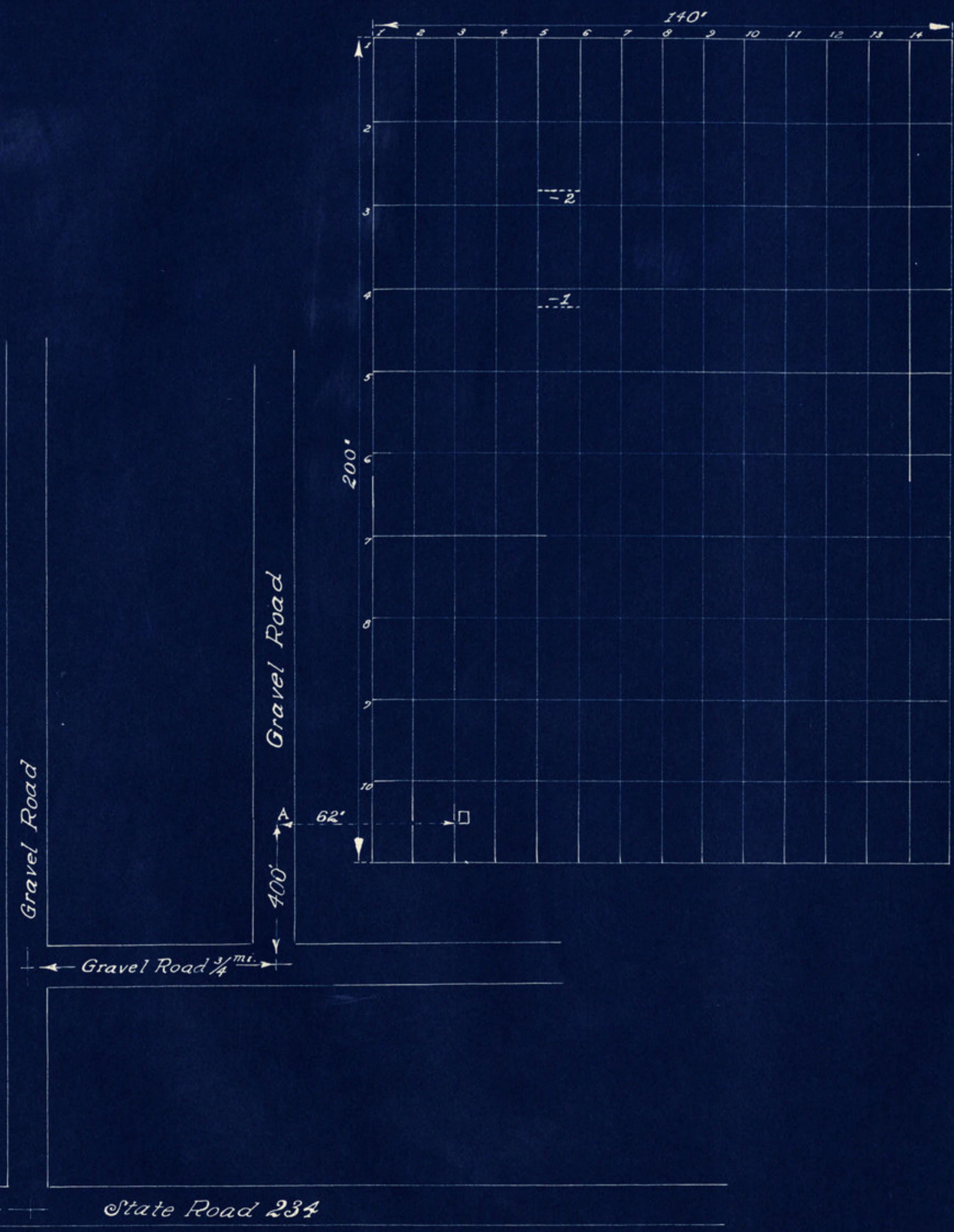


Harshbarger Cemetery,  
Section 3.  
Scale 20'-1"  
Drawn 1940.  
Sheet 4 of 5.

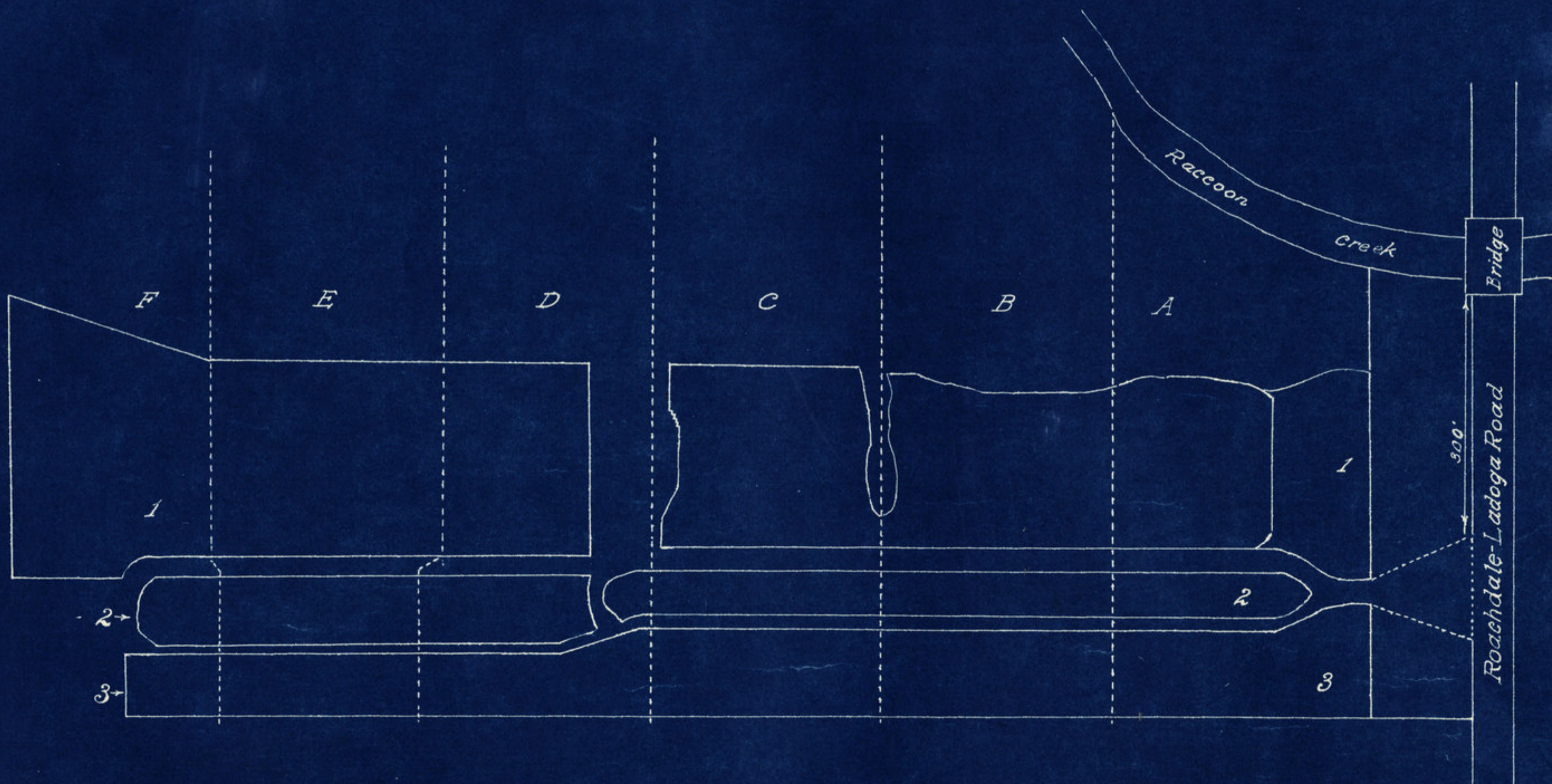


*Harshbarger Cemetery  
Section 4  
Scale 20' = 1"  
Drawn 1940.  
Sheet 5 of 5.*

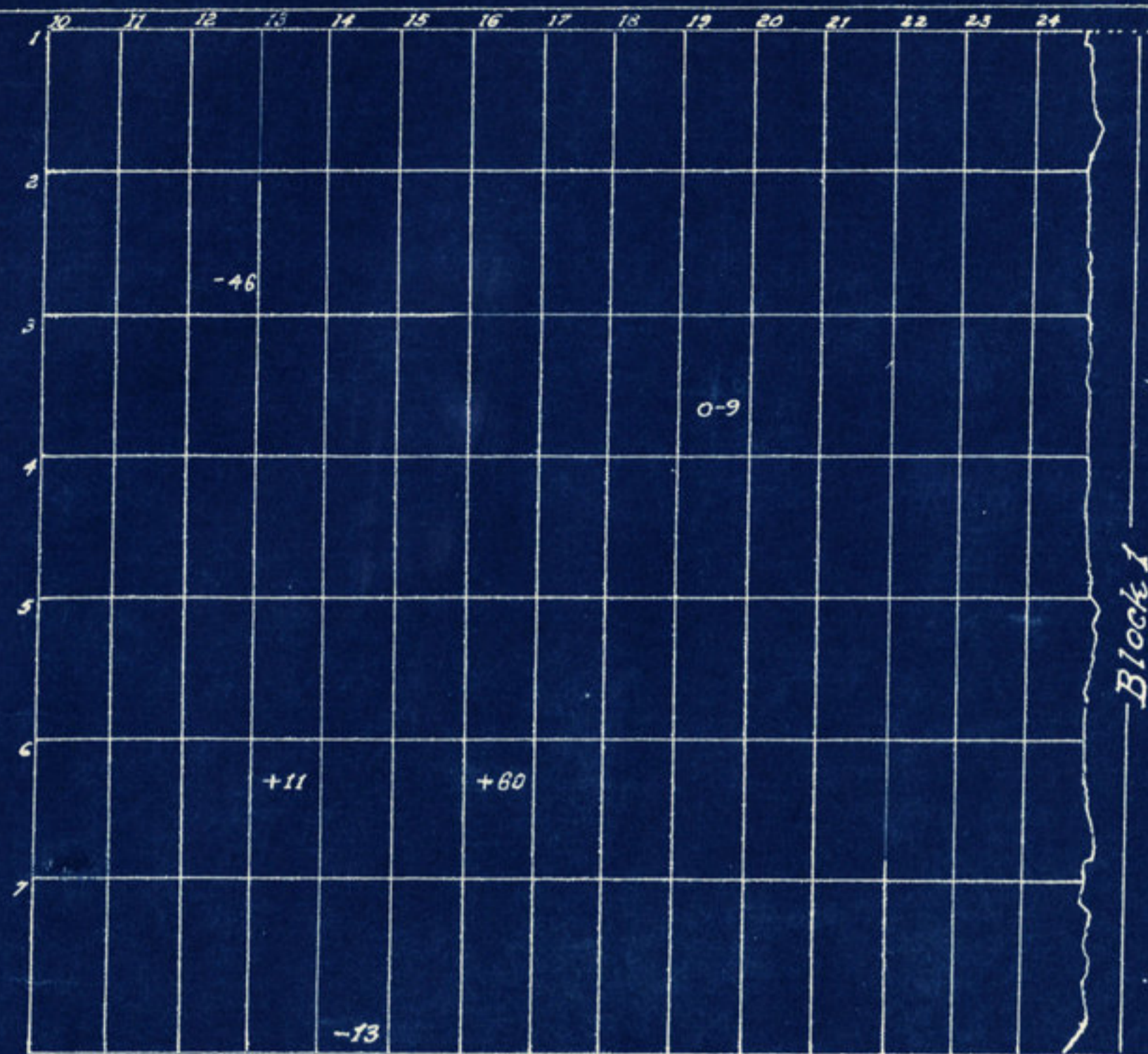




*Inlow Cemetery.  
Clark Twp. Montgomery County.  
Pt. S.W. 1/4, N.W. 1/4, Sec. 9, Twp. 17N. R. 3W.  
Scale 20'-1"  
Drawn 1940.*



Ladoga Cemetery.  
Clark Twp. Montgomery County.  
N.W. 1/4, Sect. 19, Twp 17, Range 3.  
Scale 80'-1"  
Drawn 1940  
Sheet 1 of 10.



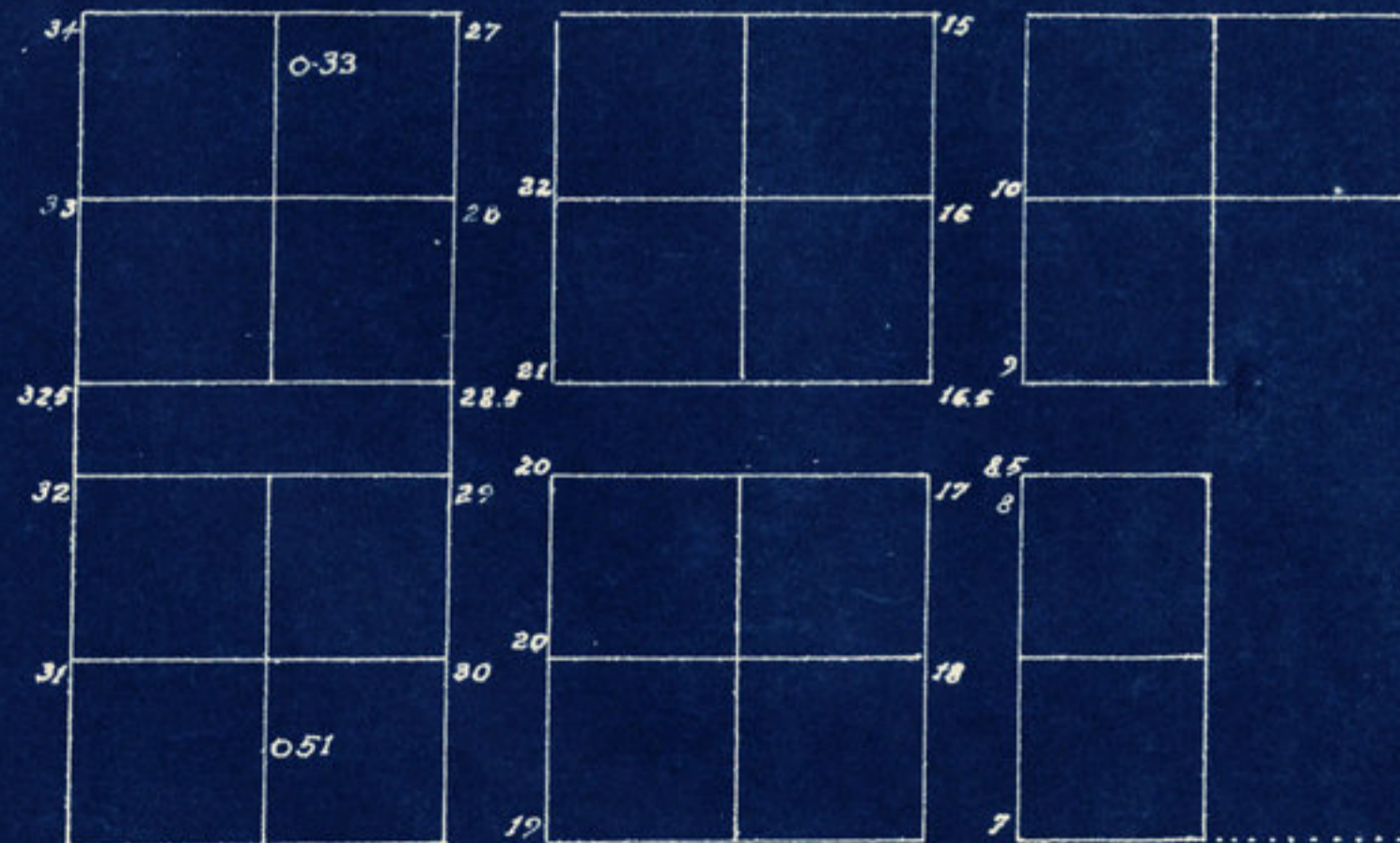
Block 1

North Drive



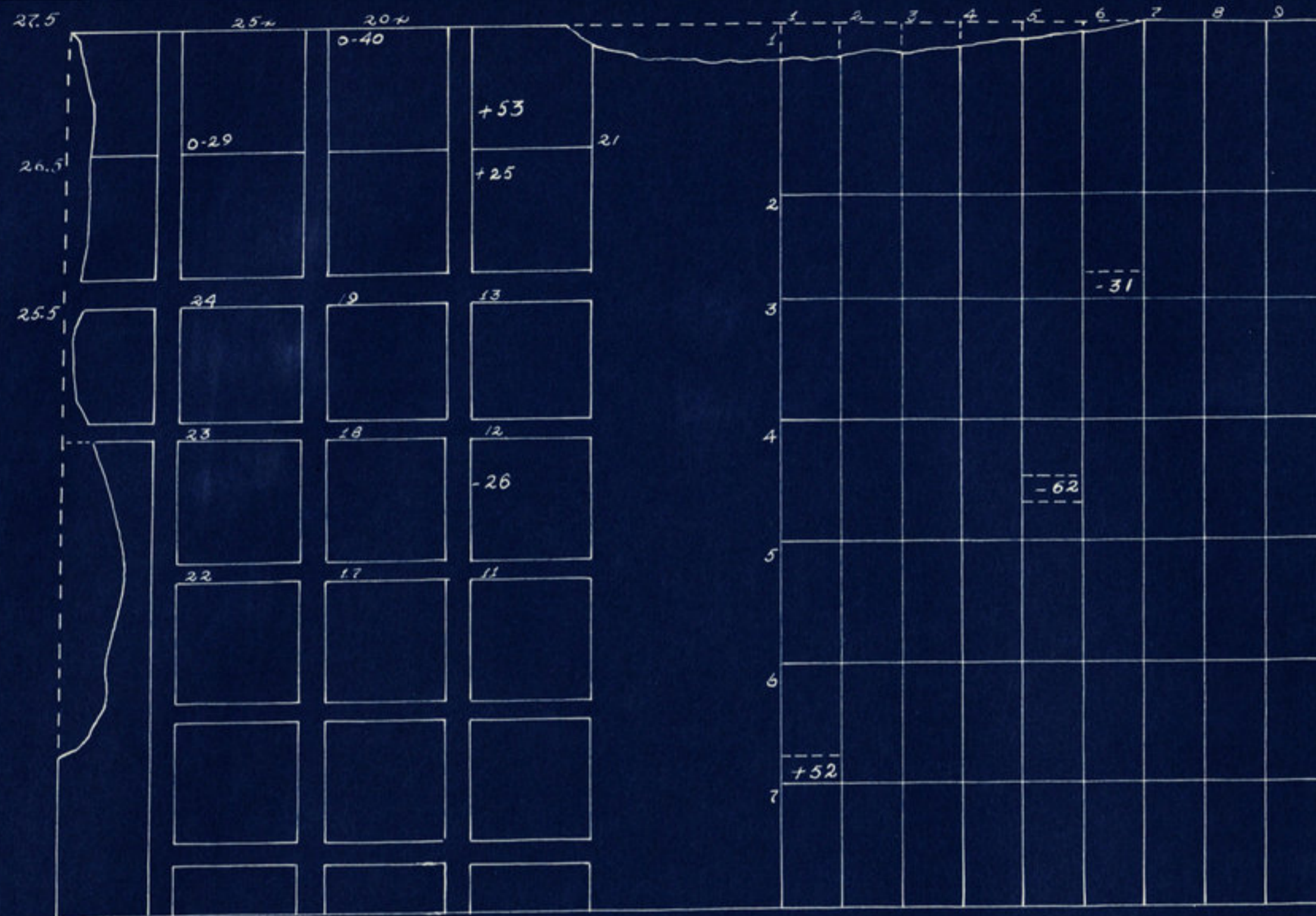
Block 2

South Drive

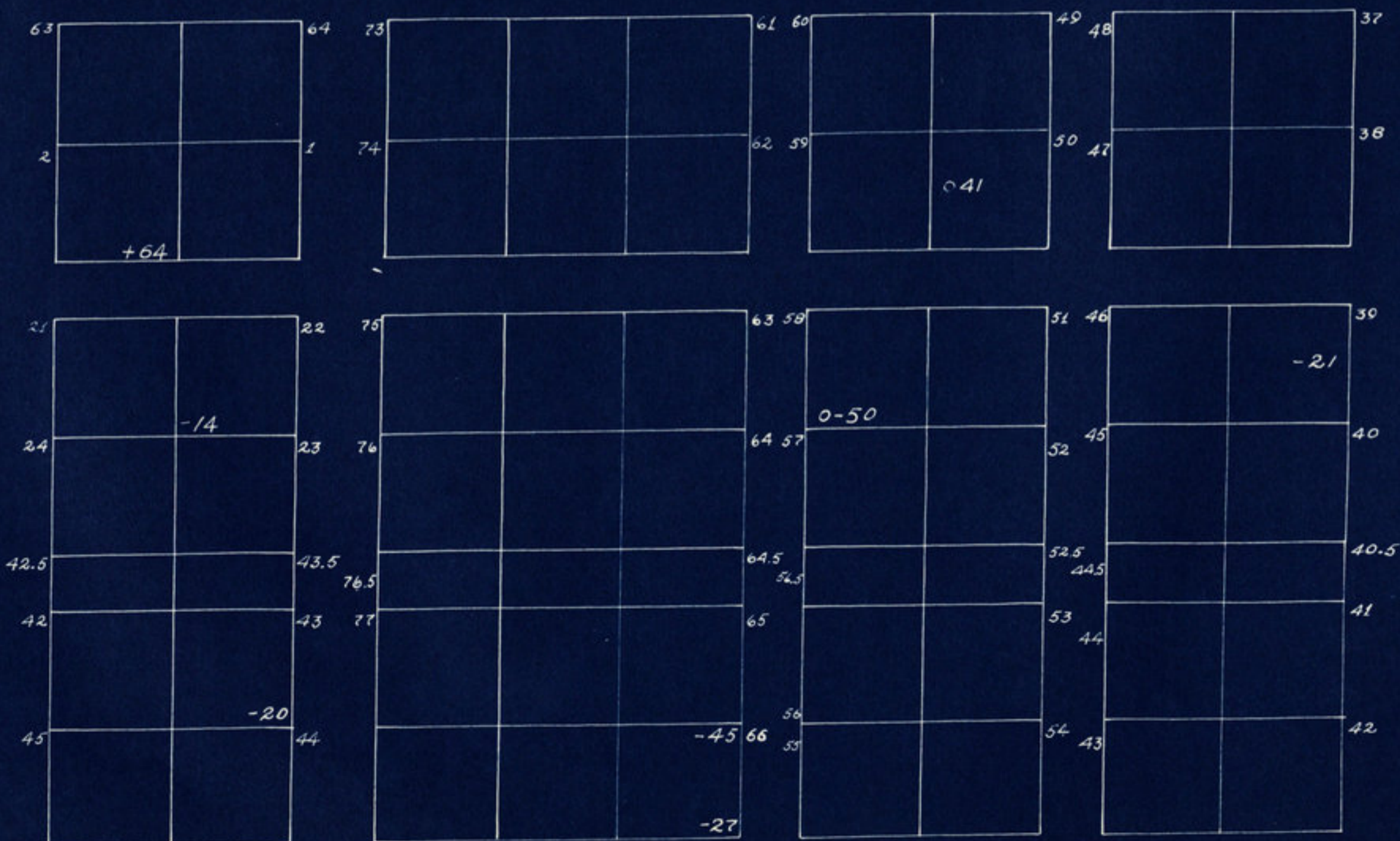


Block 3

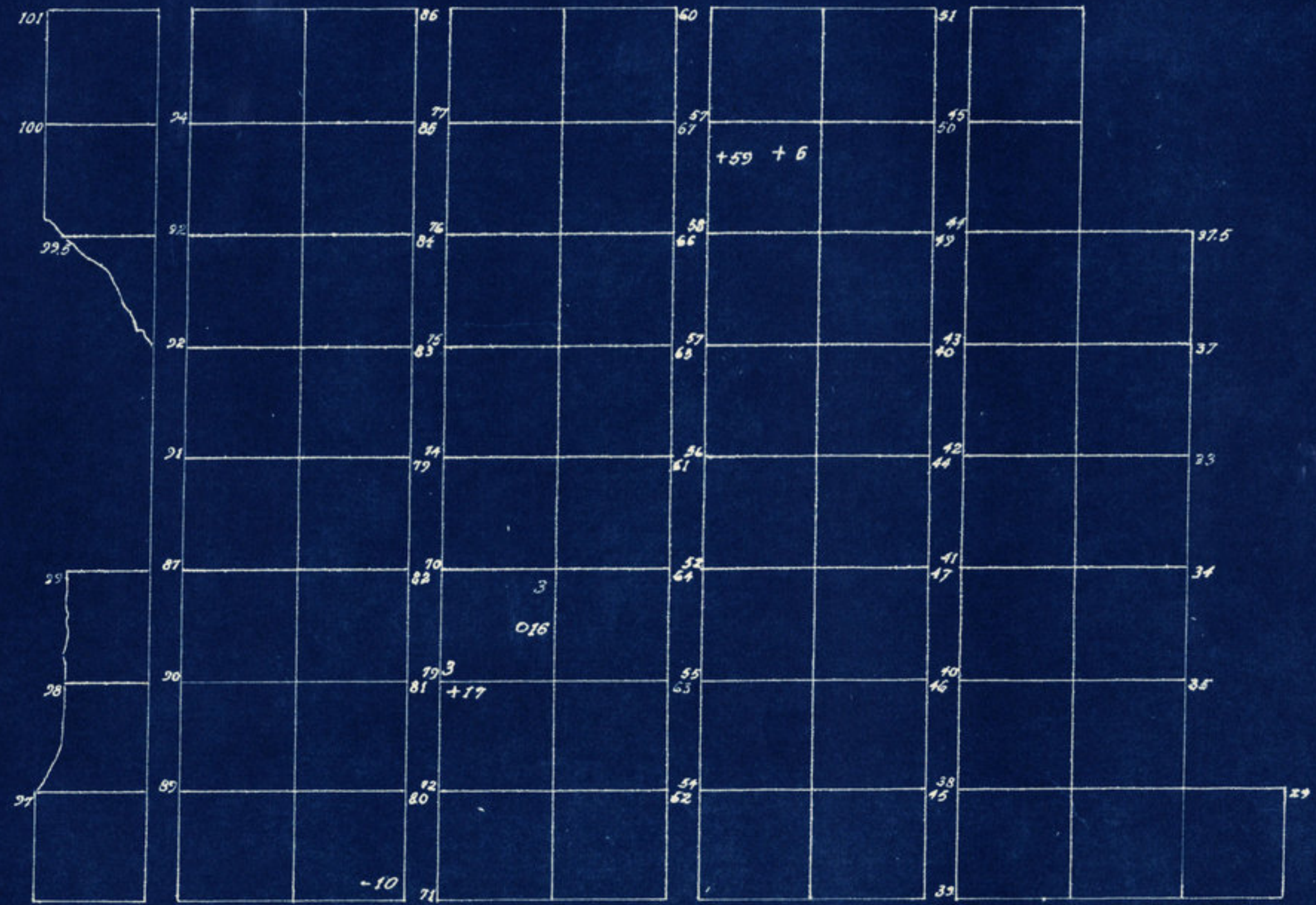
Section A.  
Blocks 1, 2, & 3.  
Ladoga Cemetery.  
Scale 20'-1"  
Drawn 1940.  
Sheet 2 of 10.



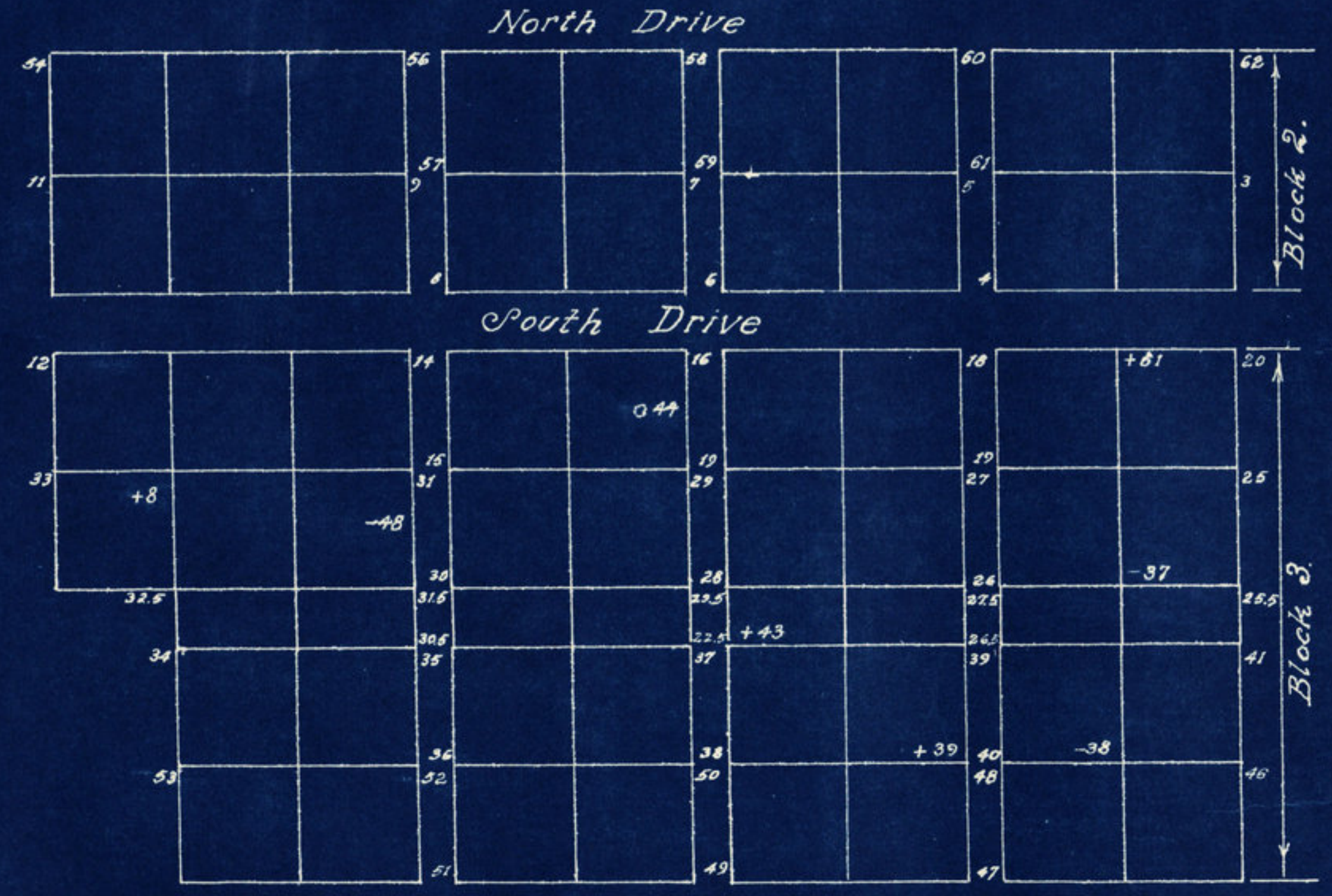
North Drive



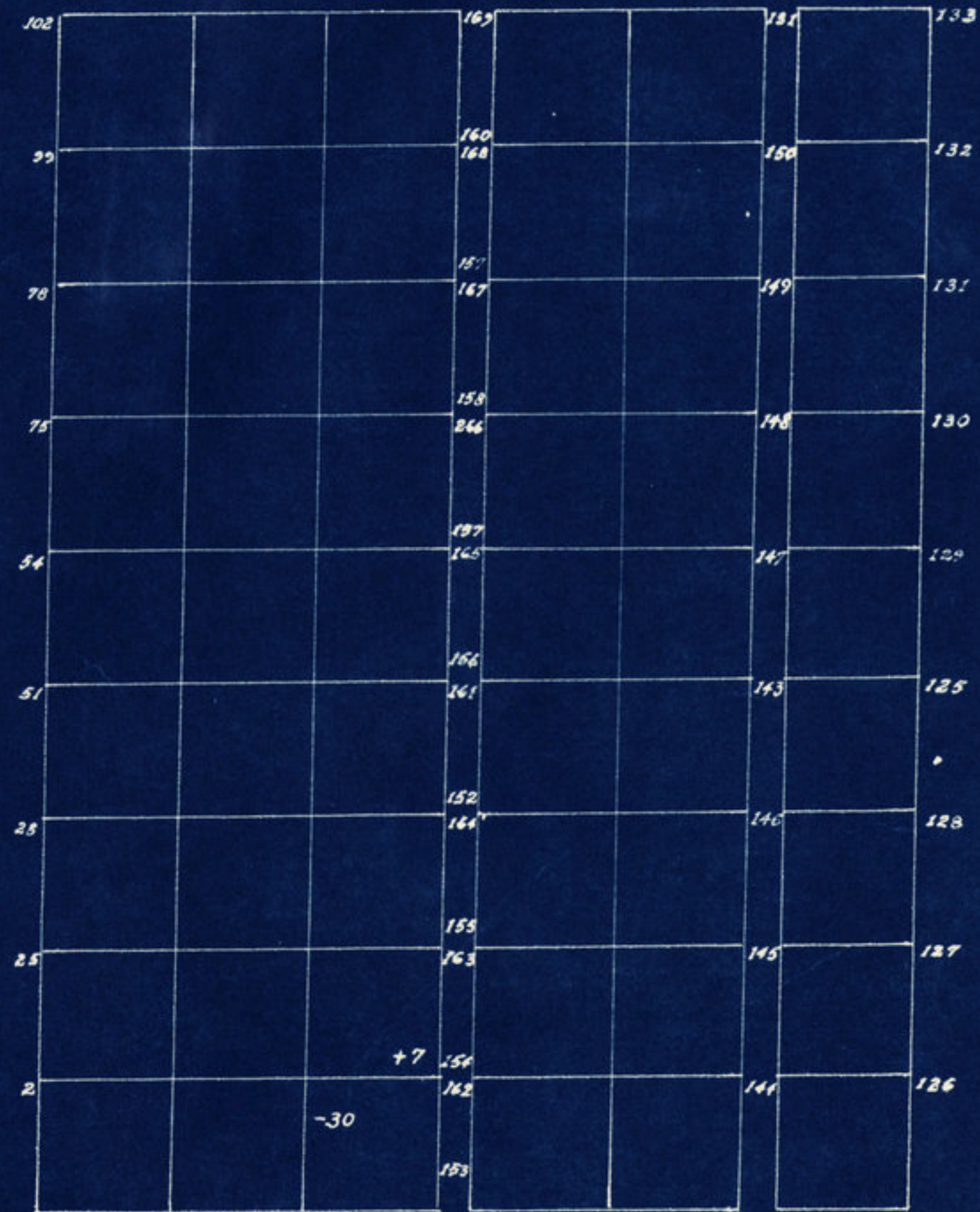
Section B.  
 Blocks 1, 2, 3.  
 Ladoga Cemetery  
 Scale 20'-1"  
 Drawn 1940  
 Sheet 3 of 10.



Section C.  
Block 1.  
Ladoga Cemetery.  
Scale 20"=1.  
Drawn 1940  
Sheet 4 of 10.

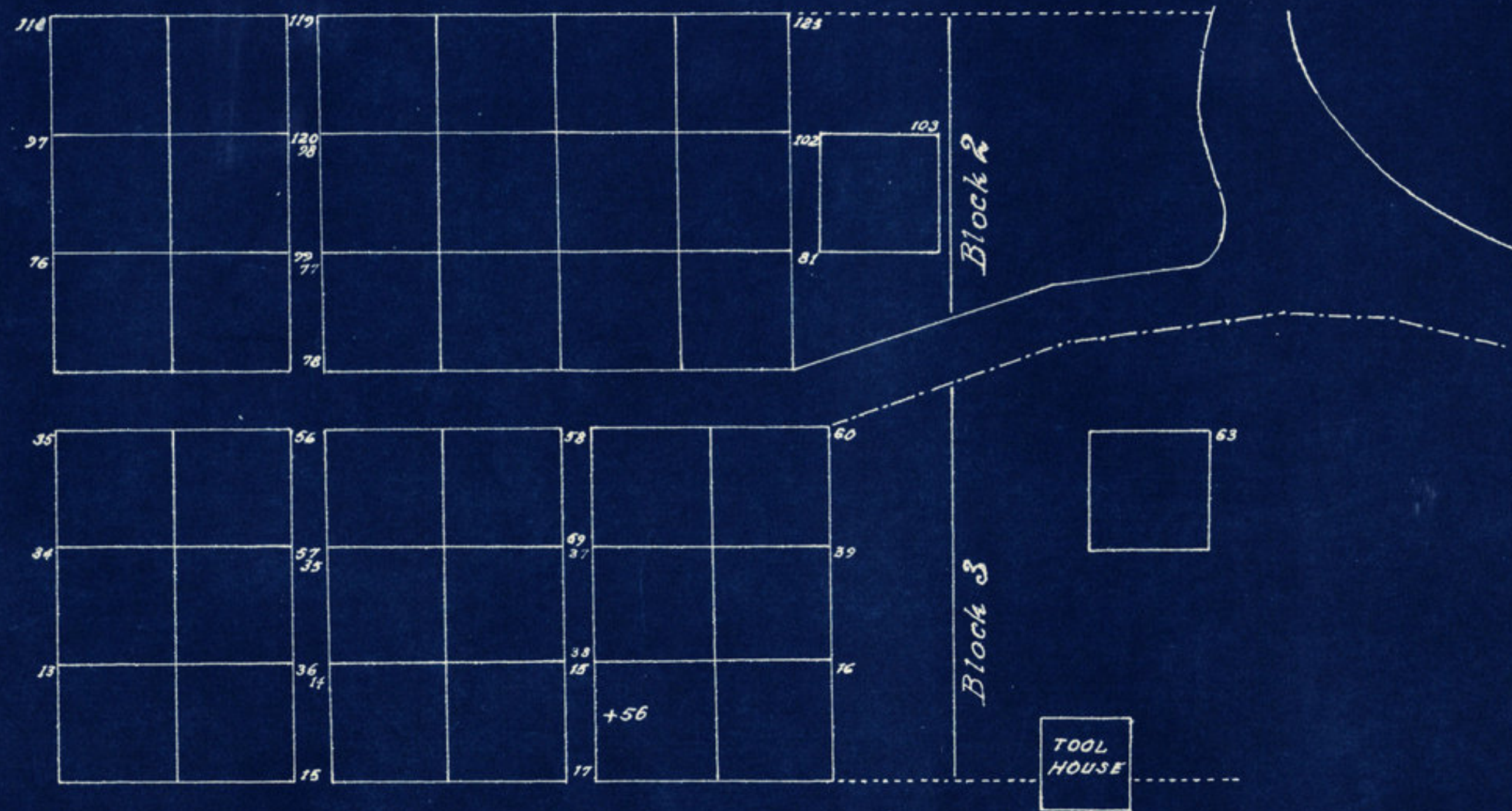


*Section C.  
Blocks 2 & 3.  
Ladoga Cemetery.  
Scale 20"=1"  
Drawn 1940  
Sheet 5 of 10.*



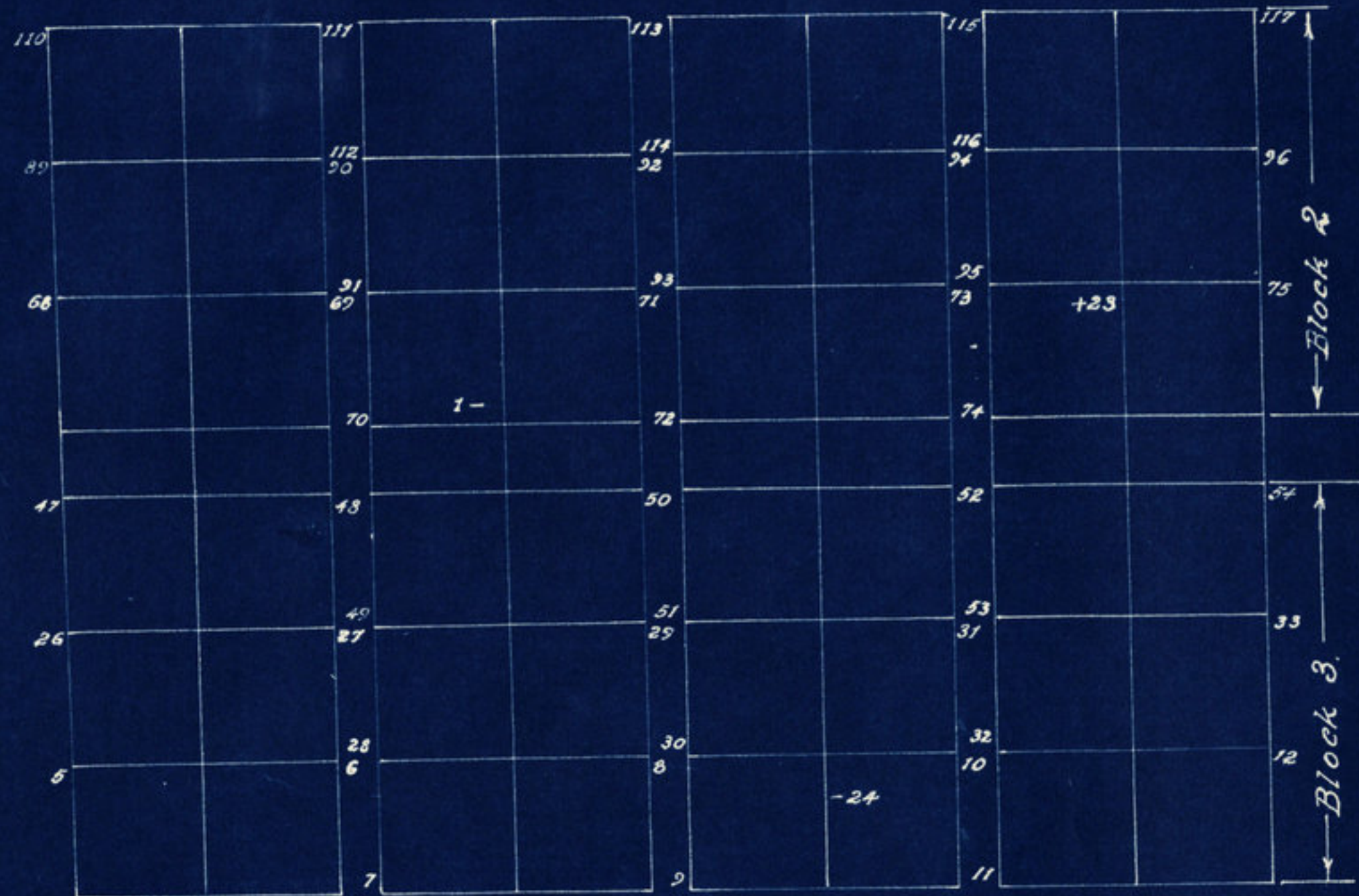
North Drive

Section D. Block 1.  
Ladoga Cemetery.  
Scale 20'-1"  
Drawn 1940.  
Sheet 6 of 10.

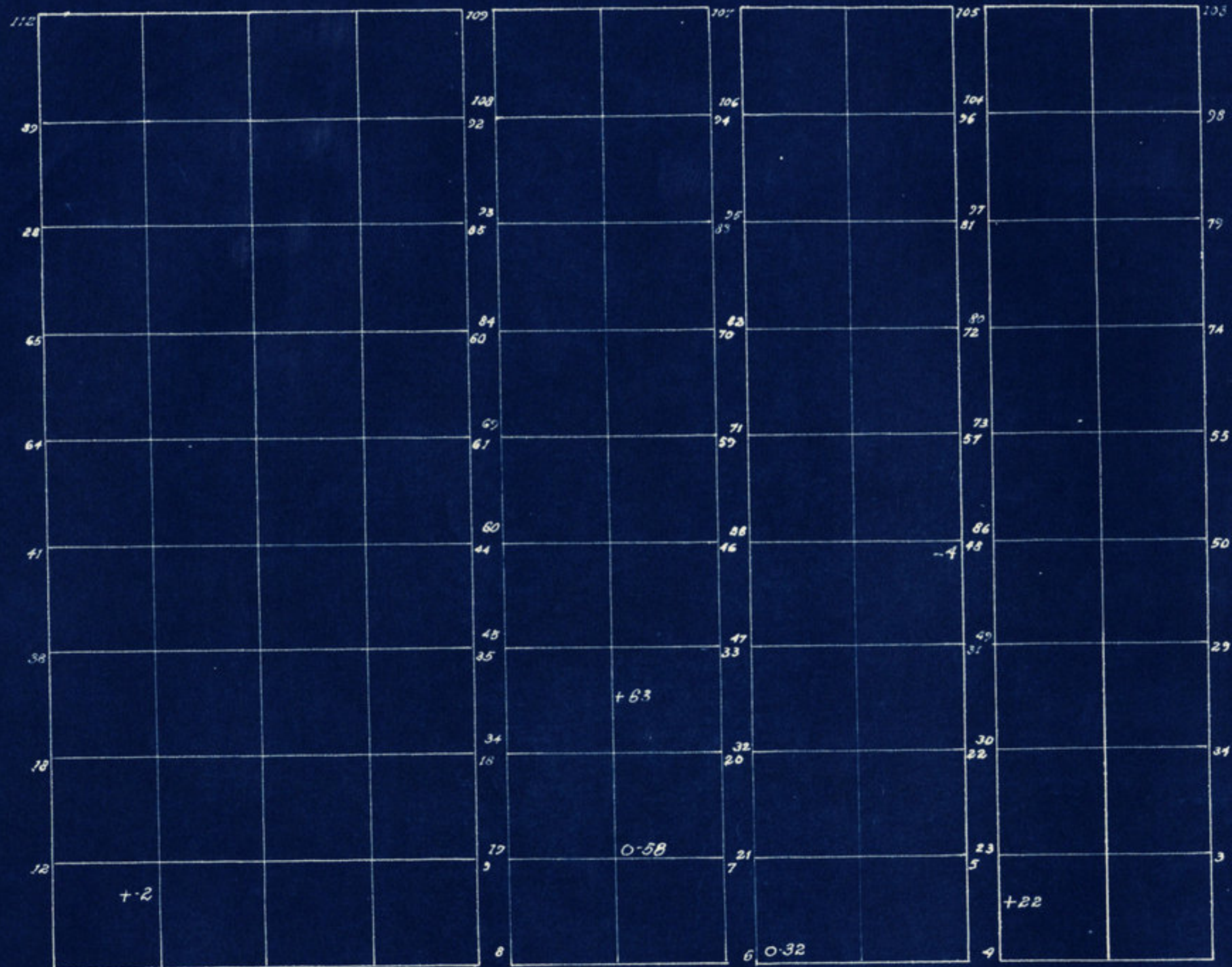


Section D, Blocks 2 & 3.  
Ladoga Cemetery.  
Scale 20'-1"  
Drawn 1940.  
Sheet 7 of 10.





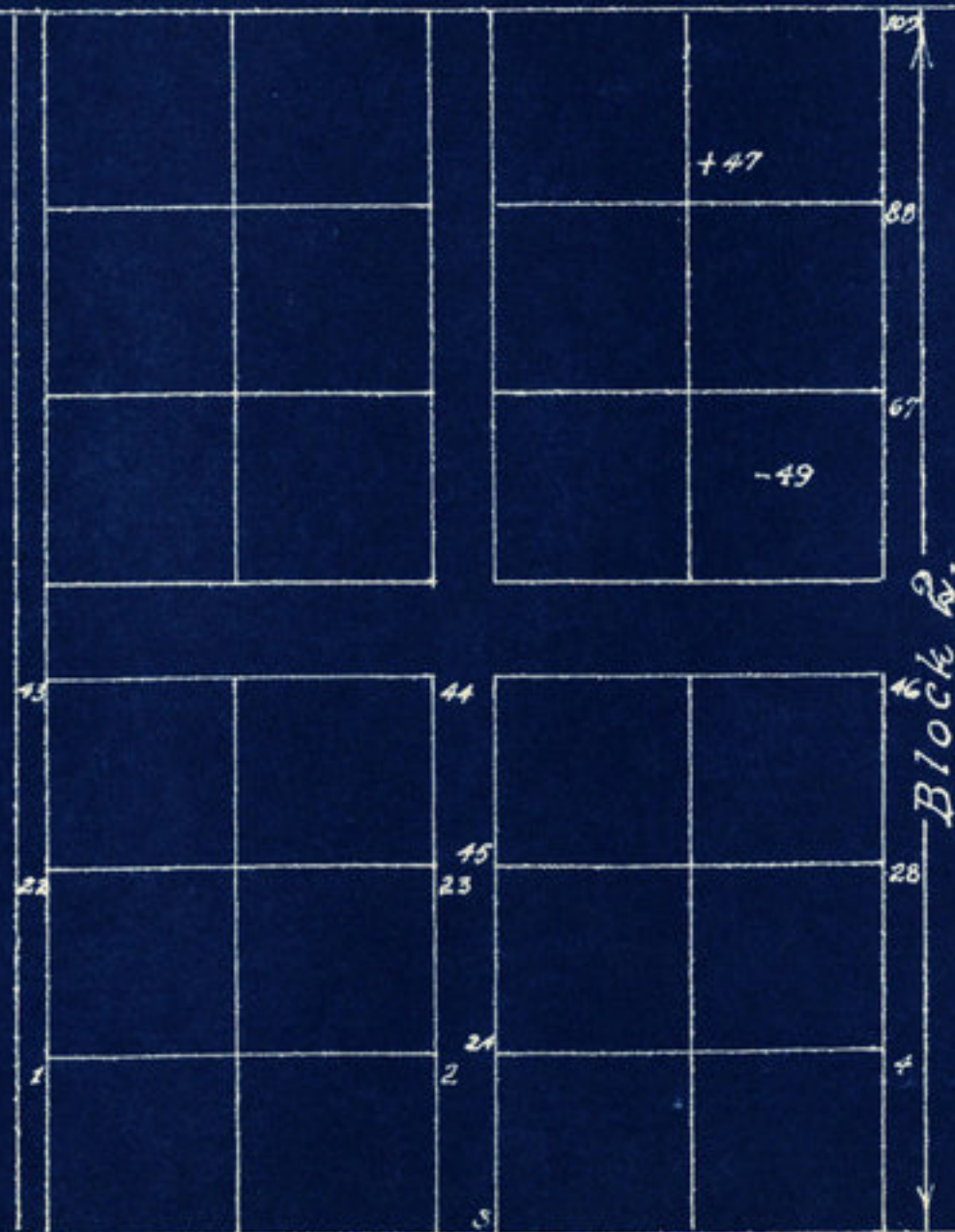
Section E.  
Blocks 2 & 3.  
Ladoga Cemetery.  
Scale 20'-1"  
Drawn 1940.  
Sheet 8 of 10.



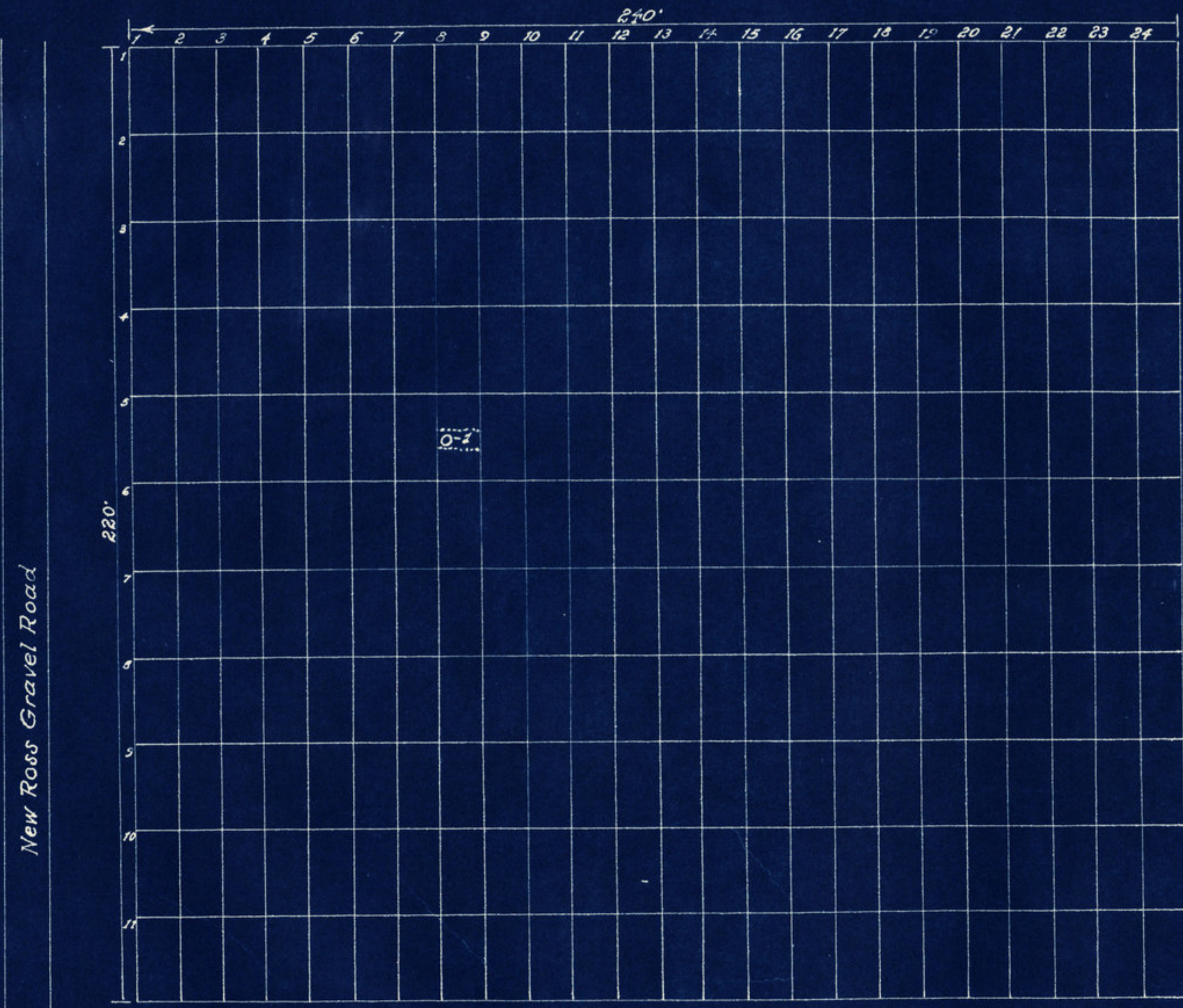
Section E.  
Block 1.  
Ladoga Cemetery.  
Scale 20'-1"  
Drawn 1940.  
Sheet 9 of 10.



The Poor  
-19



Section F.  
Block 1 & 2.  
Ladoga Cemetery.  
Scale 20'-1"  
Drawn 1940.  
Sheet 10 of 10.



← To Ladoga 4 1/2 miles

State Road 234

Mt. Pleasant Cemetery  
Clark Twp. Montgomery County  
Pt. S.E. 1/4, N.W. 1/4, Sect. 13, Twp 17, R. 3W.  
Scale 20" = 1"  
Drawn 1940.







