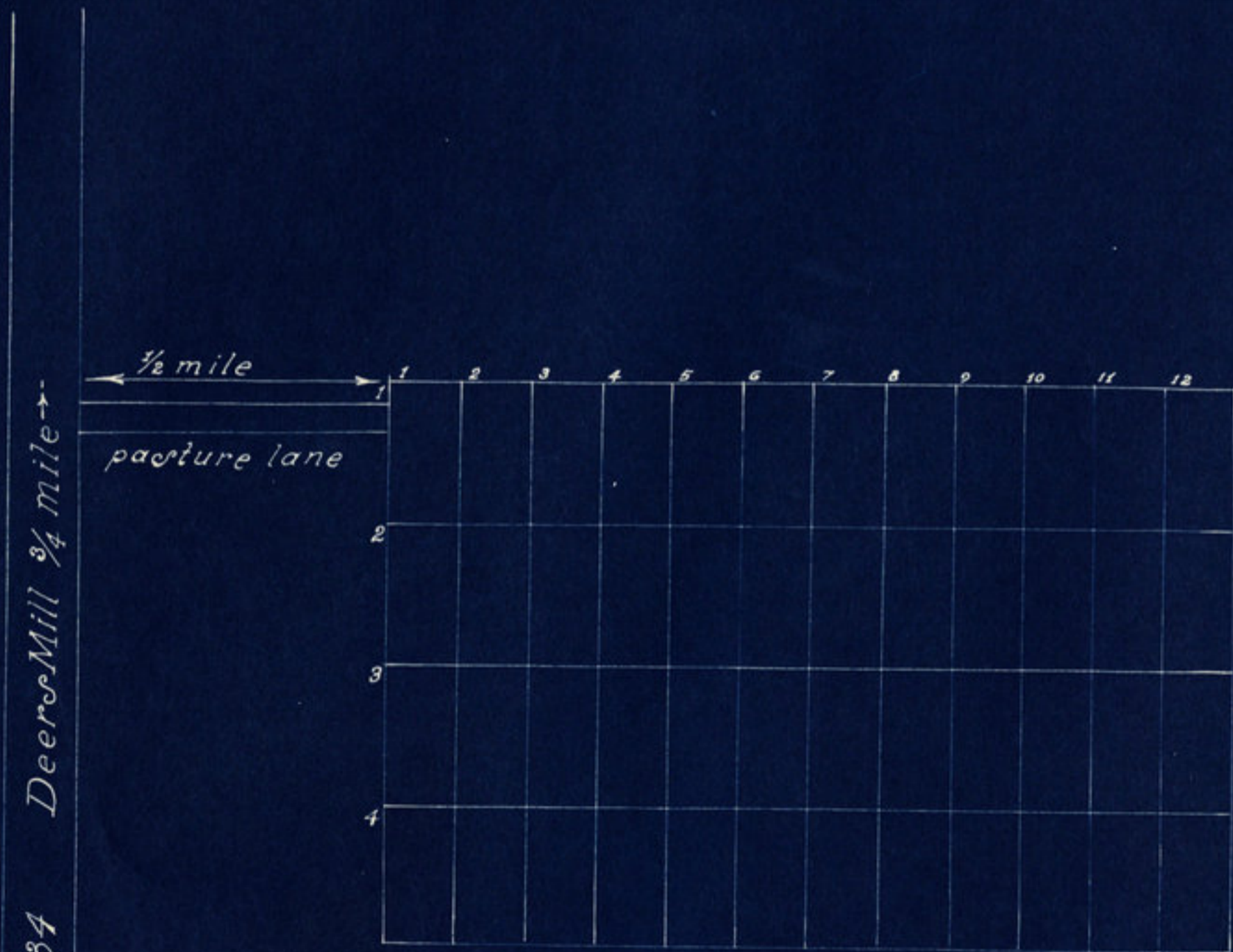
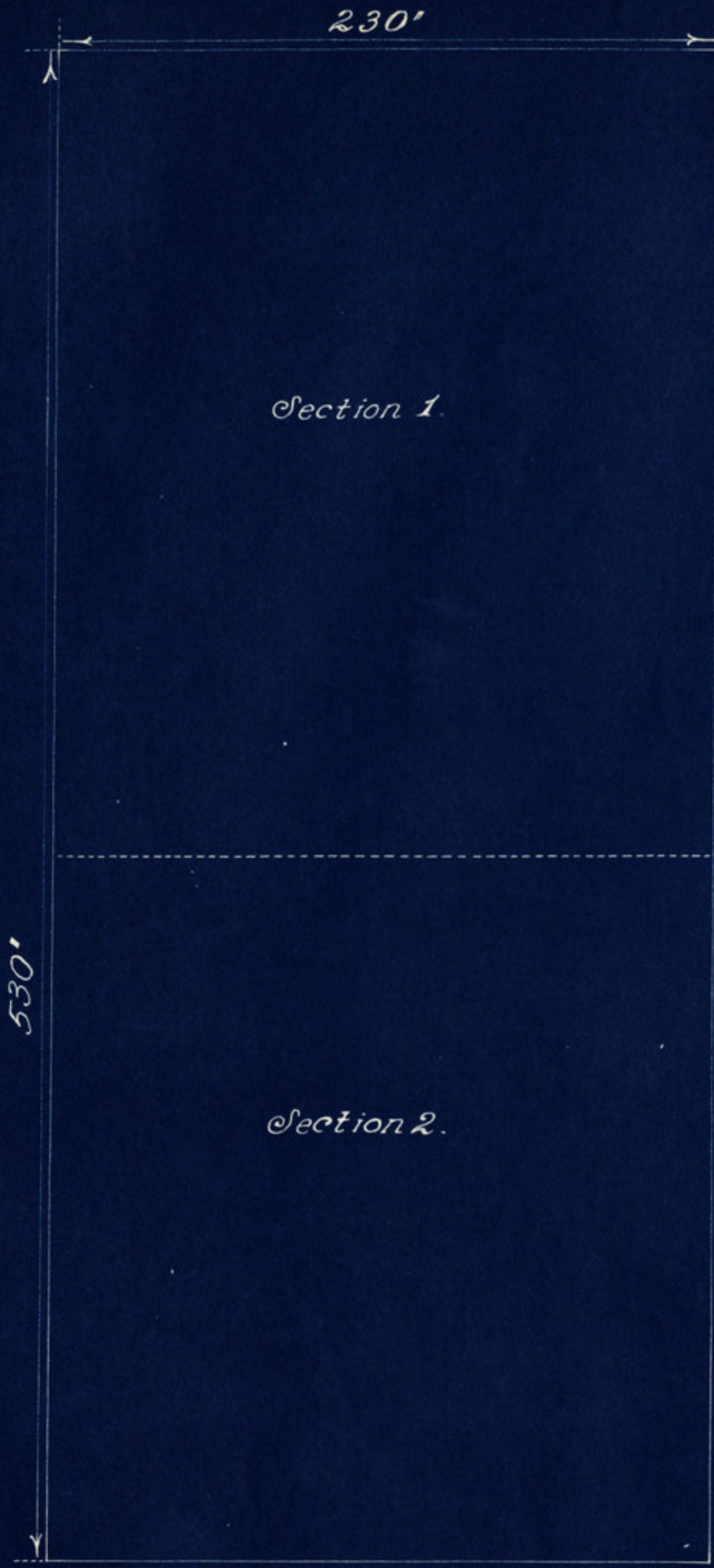


N



← 1.5 mi. to Shades Shades Road State Road 234 4 miles to N247 →

*Frisz (Old Clifty) Cemetery
 Brown Twp, Montgomery County
 Pt. NW 1/4, Sec. 12, Twp 17N., R 6W.
 Scale 20'-1"
 Drawn 1940.*



State Road 234

2.7mi to Road 47

ZOMAN
GRAVEL
ROAD

State Road 47 10 miles to Crawfordville

Freedom Cemetery.
Brown Twp. Montgomery County.
Pl. NE 1/4 Sec. 18, Twp. 17, R. 5.
Scale 40" = 1"
Drawn 1940.
Sheet 1 of 3.

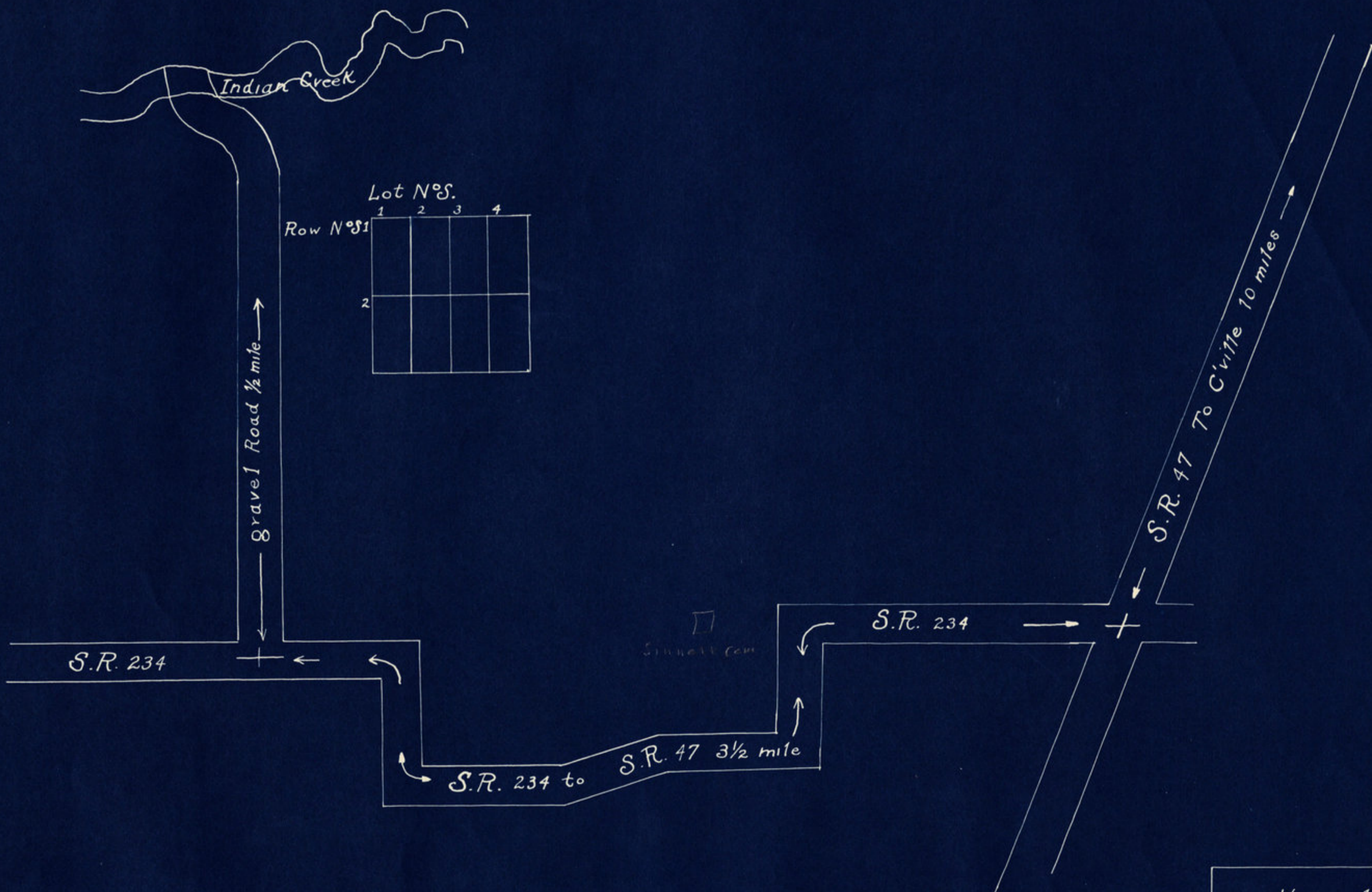


Row No.	Lot No.	1	2	3	4	5	6	7	8	9	10	11	12	13	14	15	16	17	18	19	20	21	22	23
1																								
2																								
3																								
4																								
5																								
6																								
7																								
8																								
9																								
10																								
11																								
12																								
13																								
14																								
15																								
16																								
17																								
18																								
19																								
20																								
21																								
22																								
23																								

-16 -18

-19

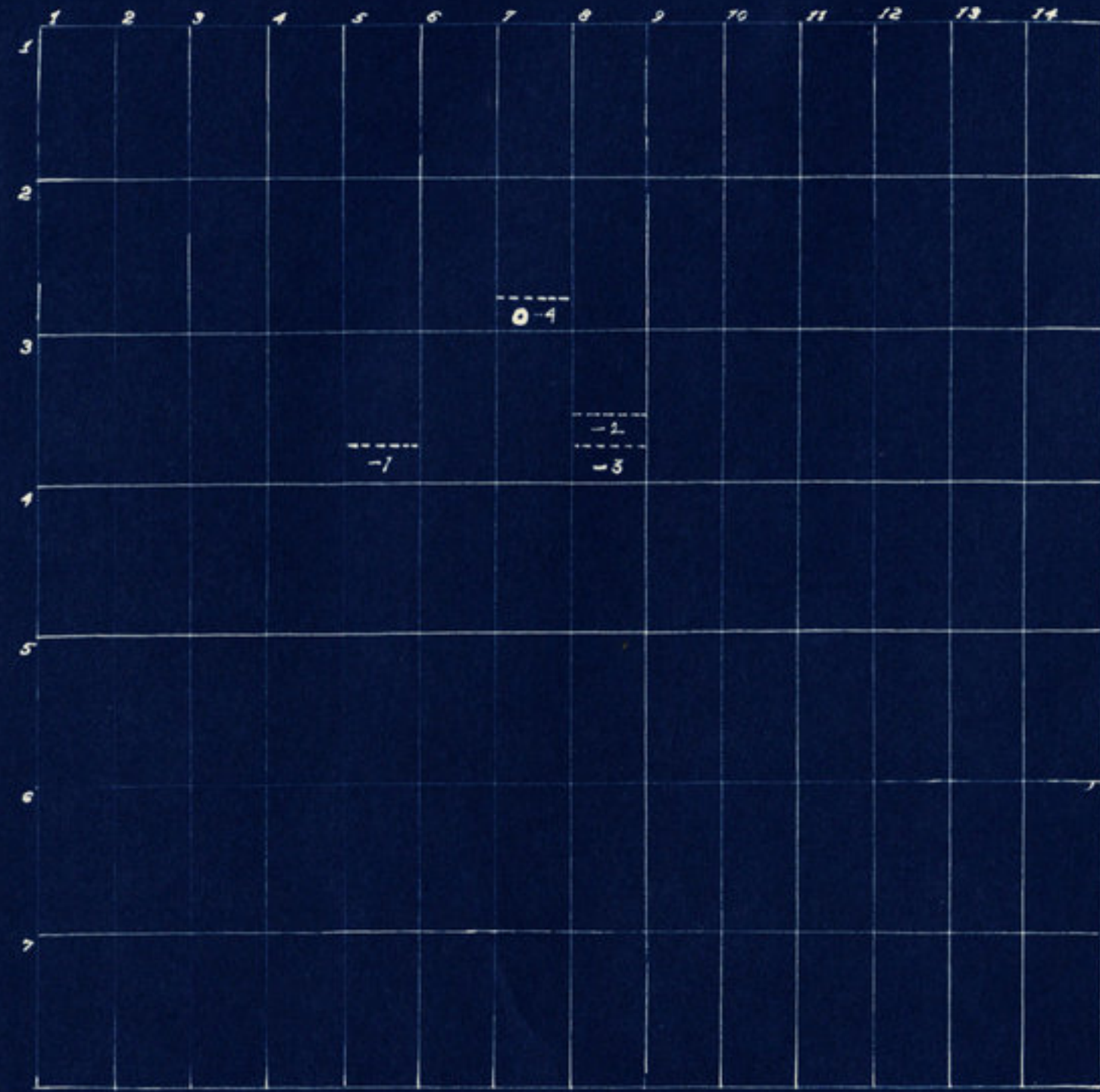
Freedom Cemetery.
Section 1.
Scale 20' = 1''
Drawn 1940.
Sheet 2 of 3



Lot N°s.

	1	2	3	4
Row N°s 1				
2				

Harrell Cemetery
 Brown Twp. Montgomery Co.
 Pt. NW 1/4 SW 1/4 Sect. 7 Twp. 17N R5W
 Scale 20'-1"
 Drawn 1940



State Road 47

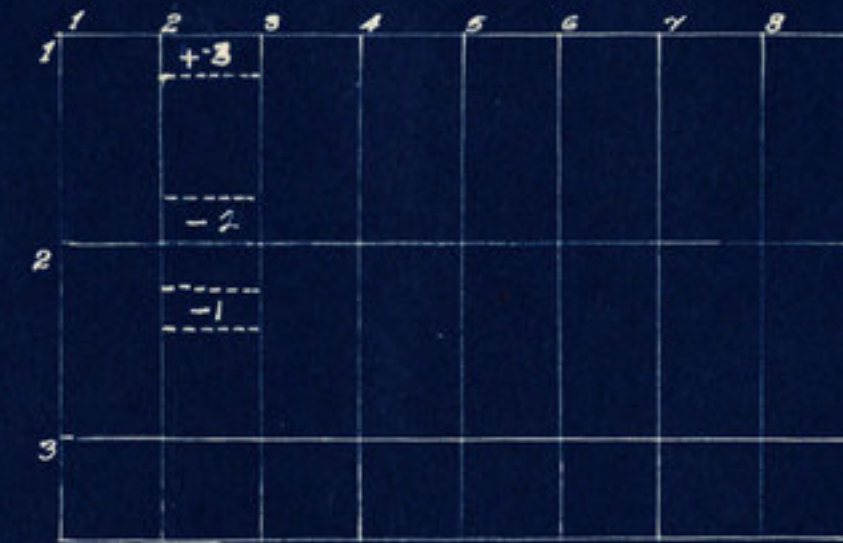
8 miles to Crawfordsville →

Old Hickory (O'Connor) Cemetery
 Brown Twp. Montgomery County
 N.E. 1/4, Sec. 9, Twp. 17N., Range 5W.
 Scale 20' - 1"
 Drawn 1940



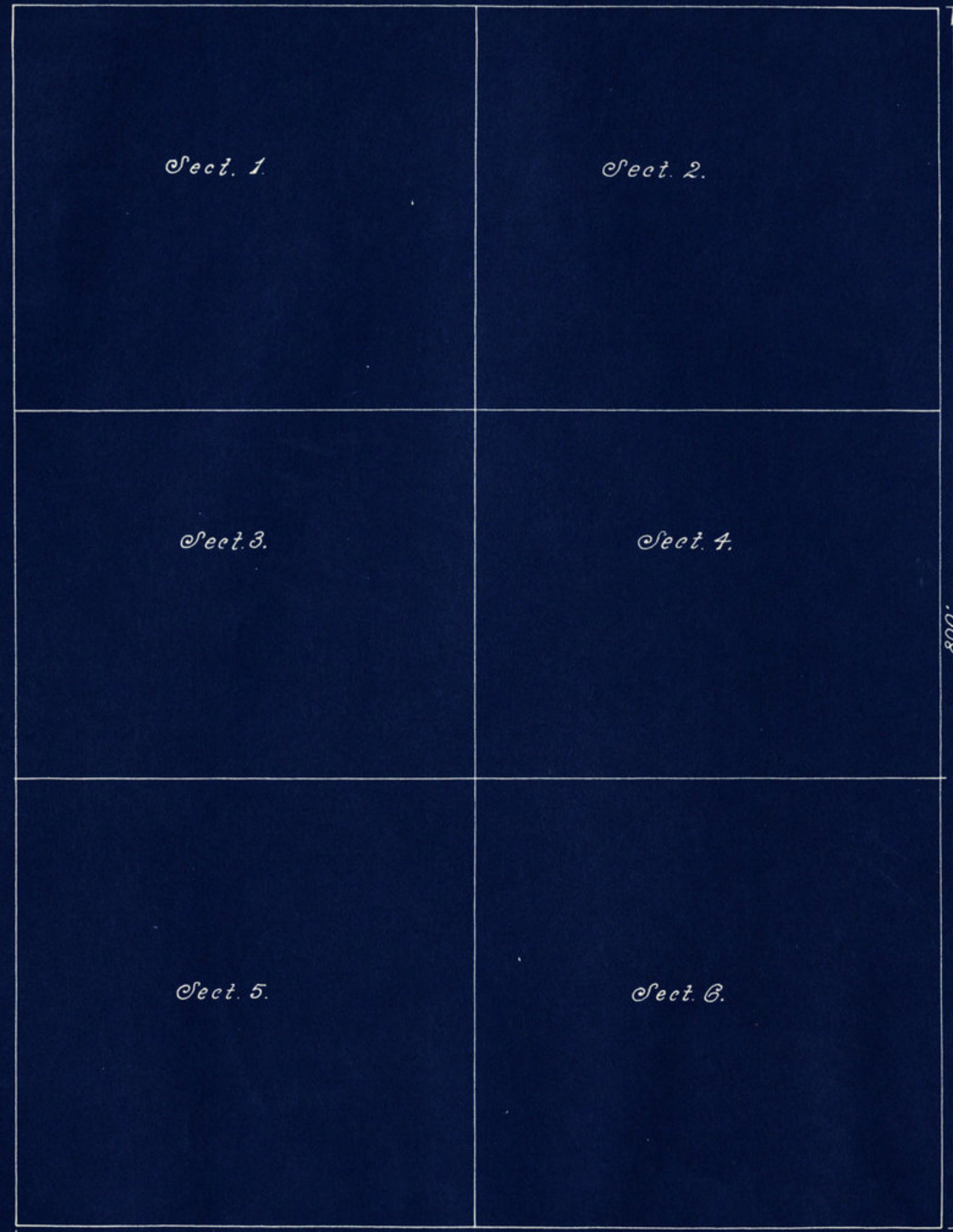
Brown Valley 1 mile

State Road 47.



Jarvis Cemetery
 Brown Twp, Montgomery County
 N.E. 1/4, Sec. 9, Twp. 17N. Range 5W.
 Scale 20' - 1"
 Drawn 1940.

N



Sect. 1.

Sect. 2.

Sect. 3.

Sect. 4.

Sect. 5.

Sect. 6.

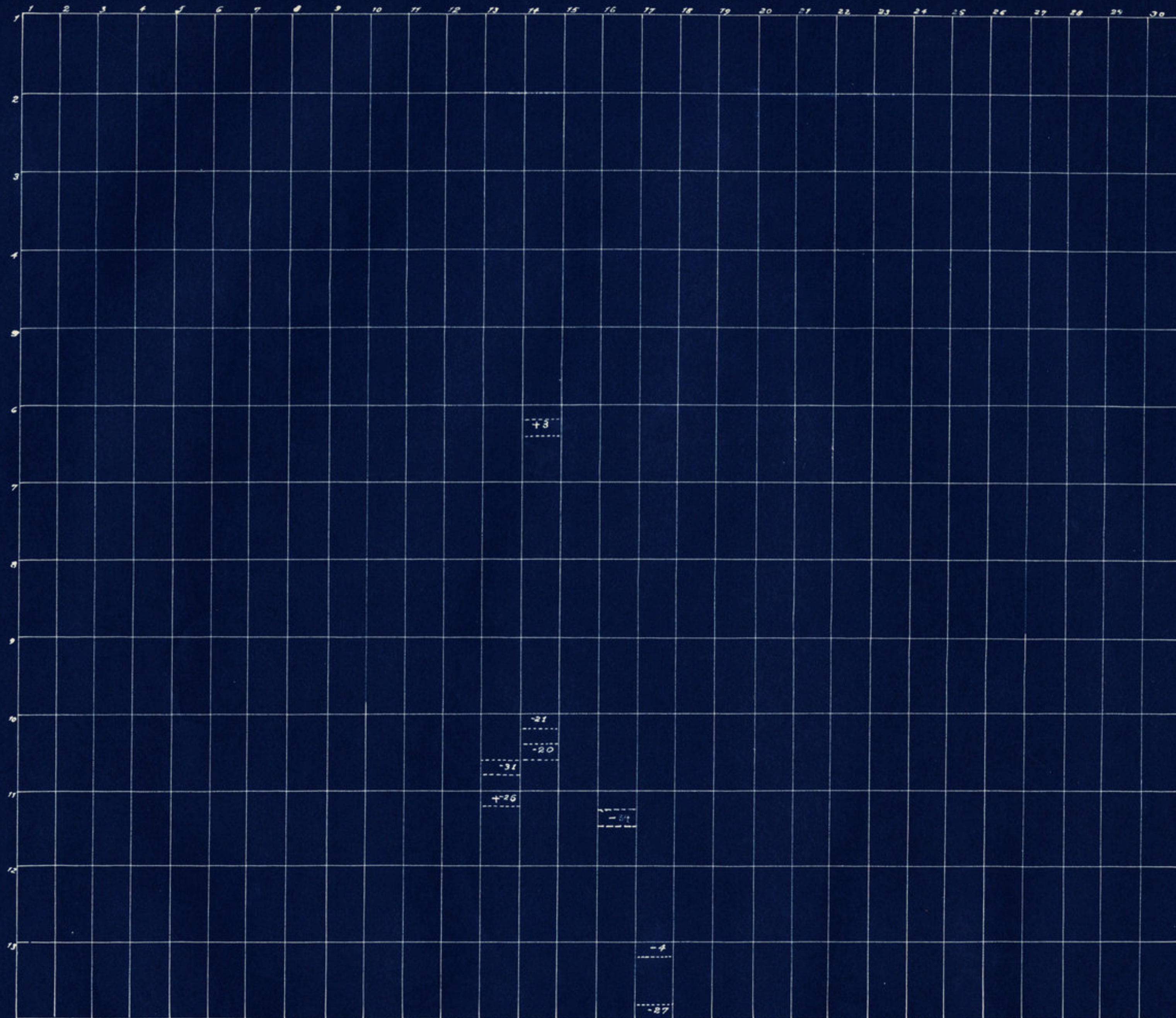
800' →
 3 miles to Road 234 →
 Black Top Road
 1,000' →

600' →
 Gravel Road 5 miles to Byron →

Waveland city limits →

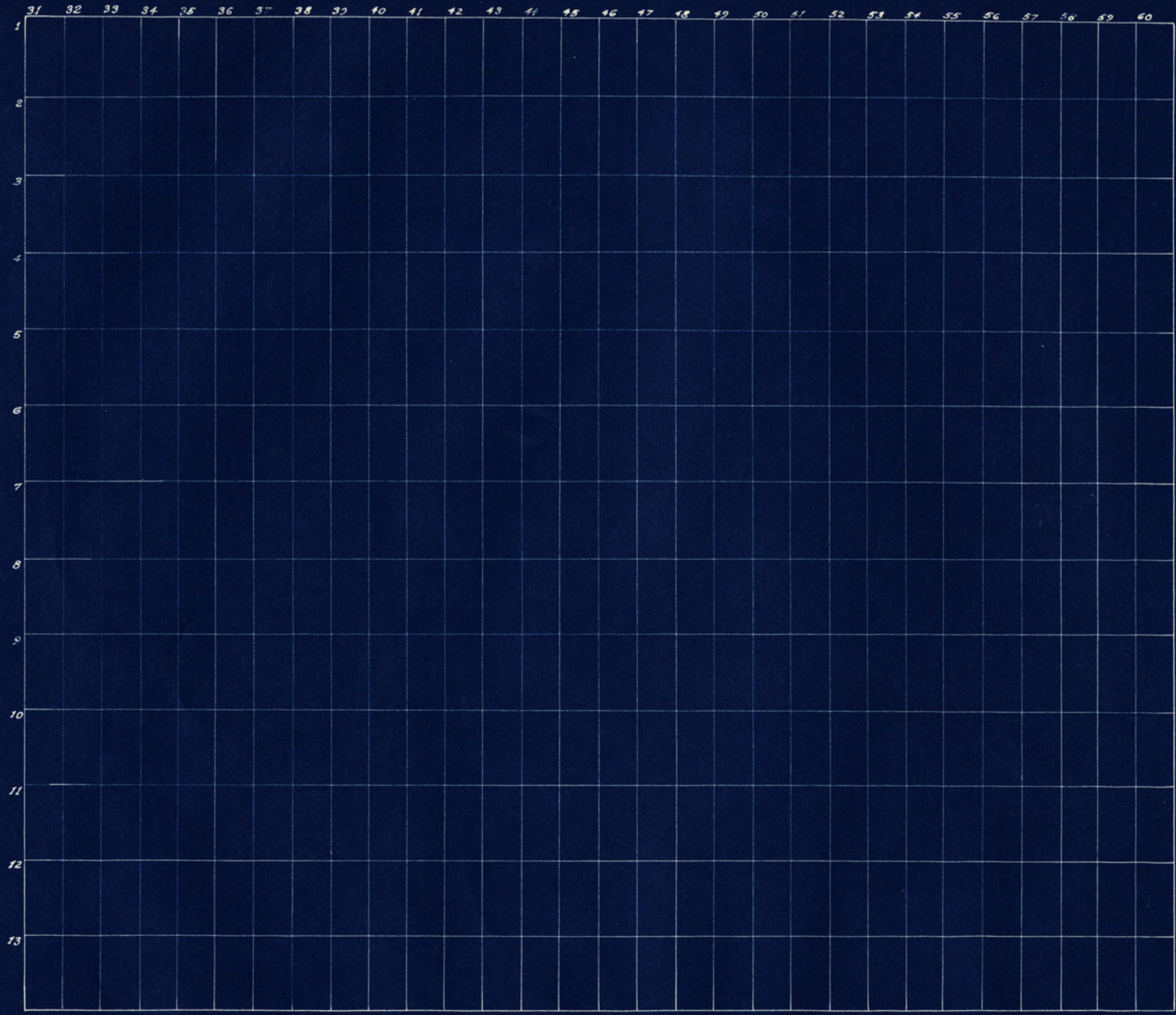
State Road 47 15 miles to Crawfordsville →

Maple Ridge Cemetery.
 Brown Twp., Montgomery County.
 S.W. 1/4, Sect. 25, Twp. 17., Range 6.
 Scale 60'-1"
 Drawn 1940.
 Sheet 1 of 7.

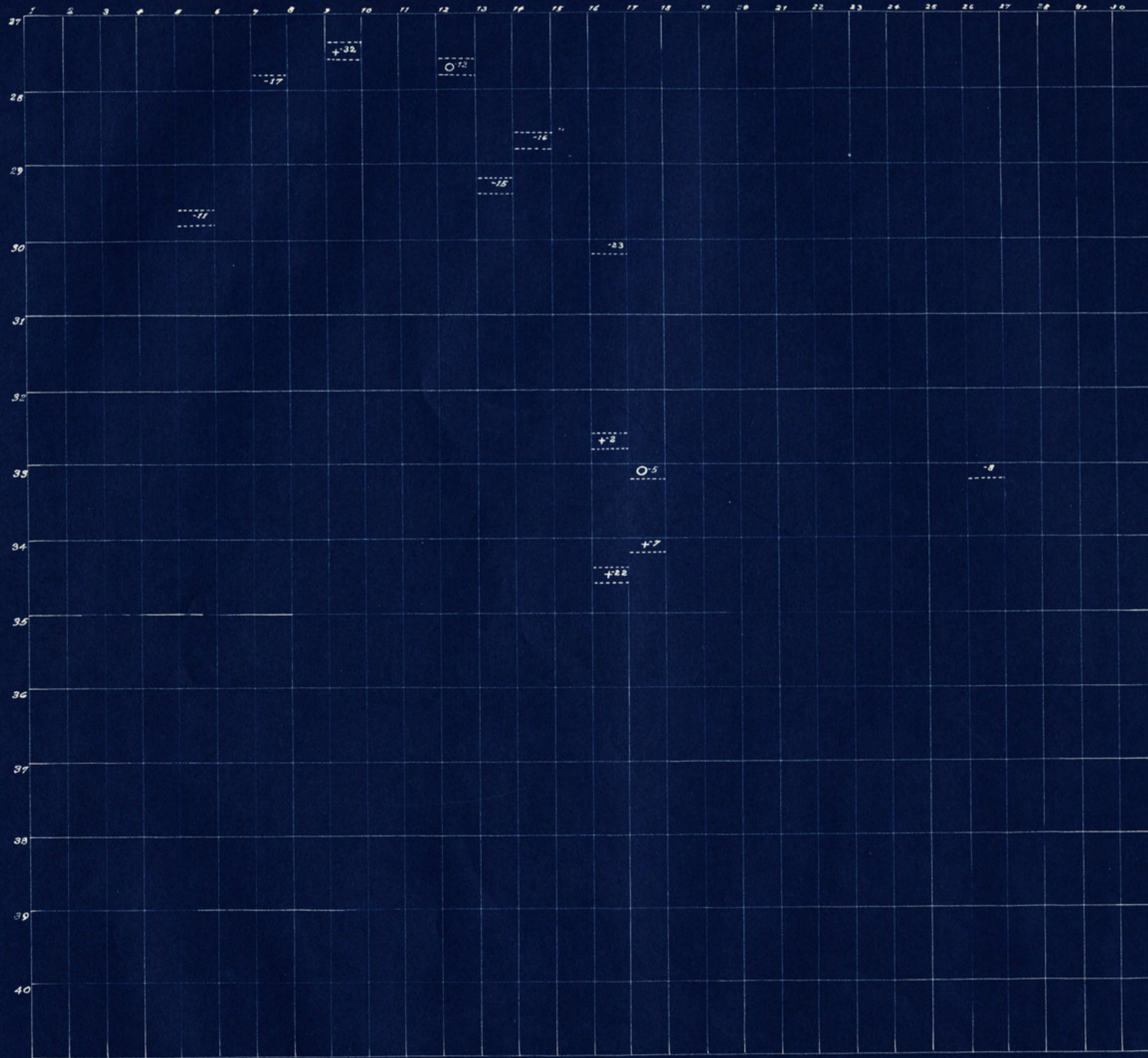


Maple Ridge Cemetery.
Section 1.
Scale 20'-1.
Drawn 1940.
Sheet 2 of 7.

N

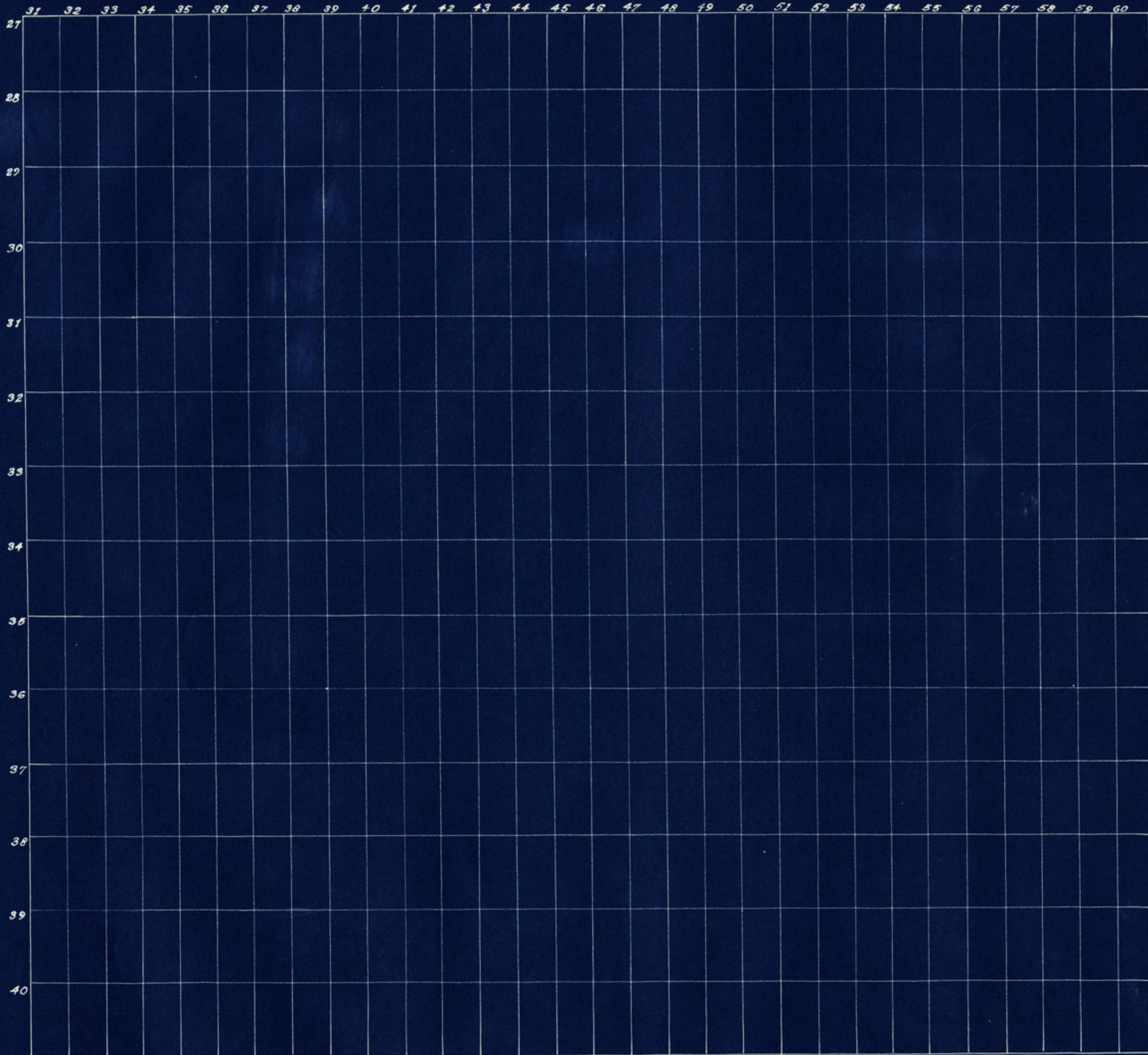


Maple Ridge Cemetery.
Section 2.
Scale 20'-1"
Drawn 1940.
Sheet 3 of 7.



Maple Ridge Cemetery.
Section 5.
Scale 20'-1"
Drawn 1940.
Sheet 6 of 7.

N

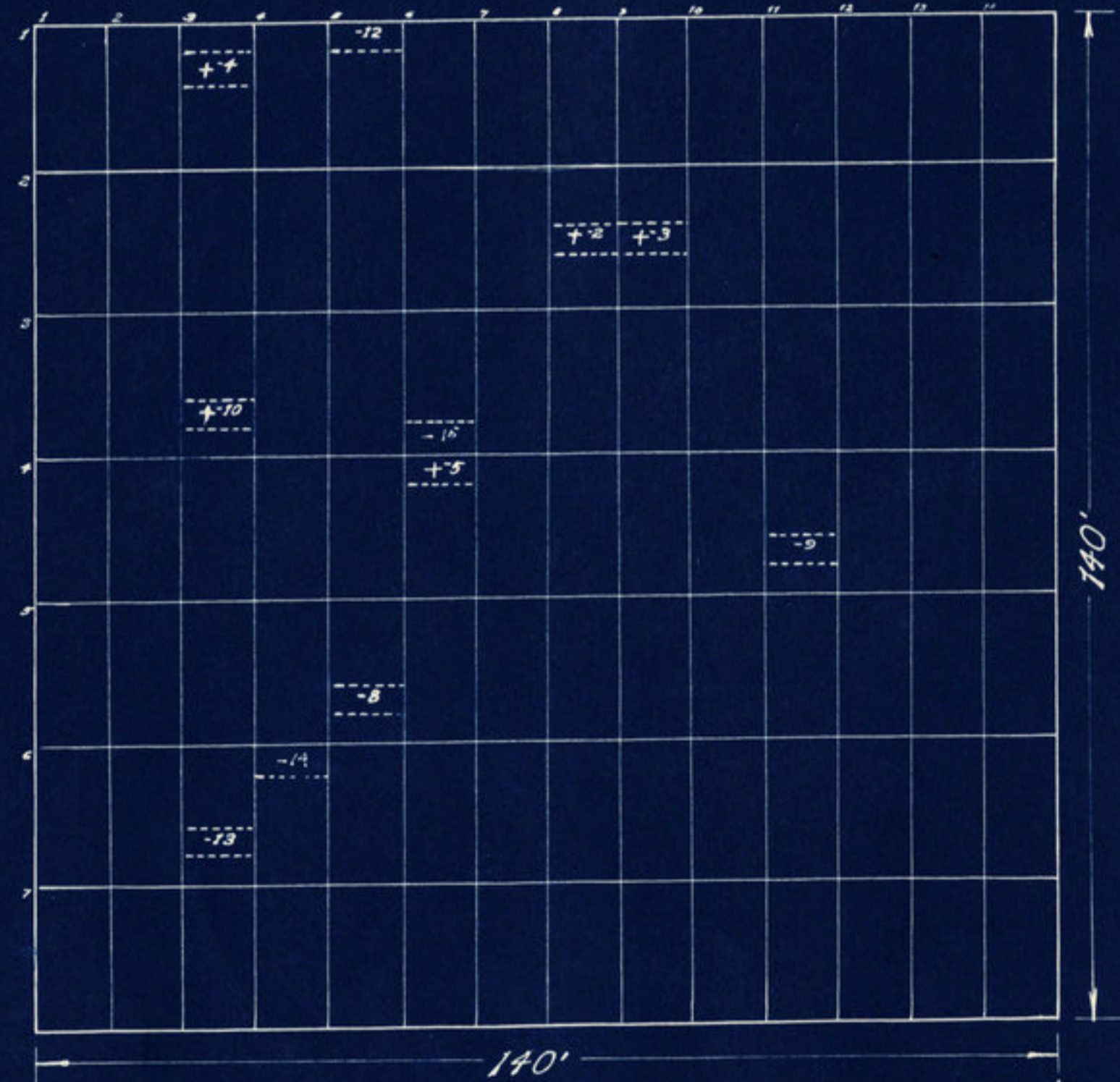


Maple Ridge Cemetery:
Section 6.
Scale 20'-1"
Drawn 1940.
Sheet 7 of 7.

N

State Road 47 15 miles to Crawfordville →

1/2 mile to State Road 47 →



140'

140'

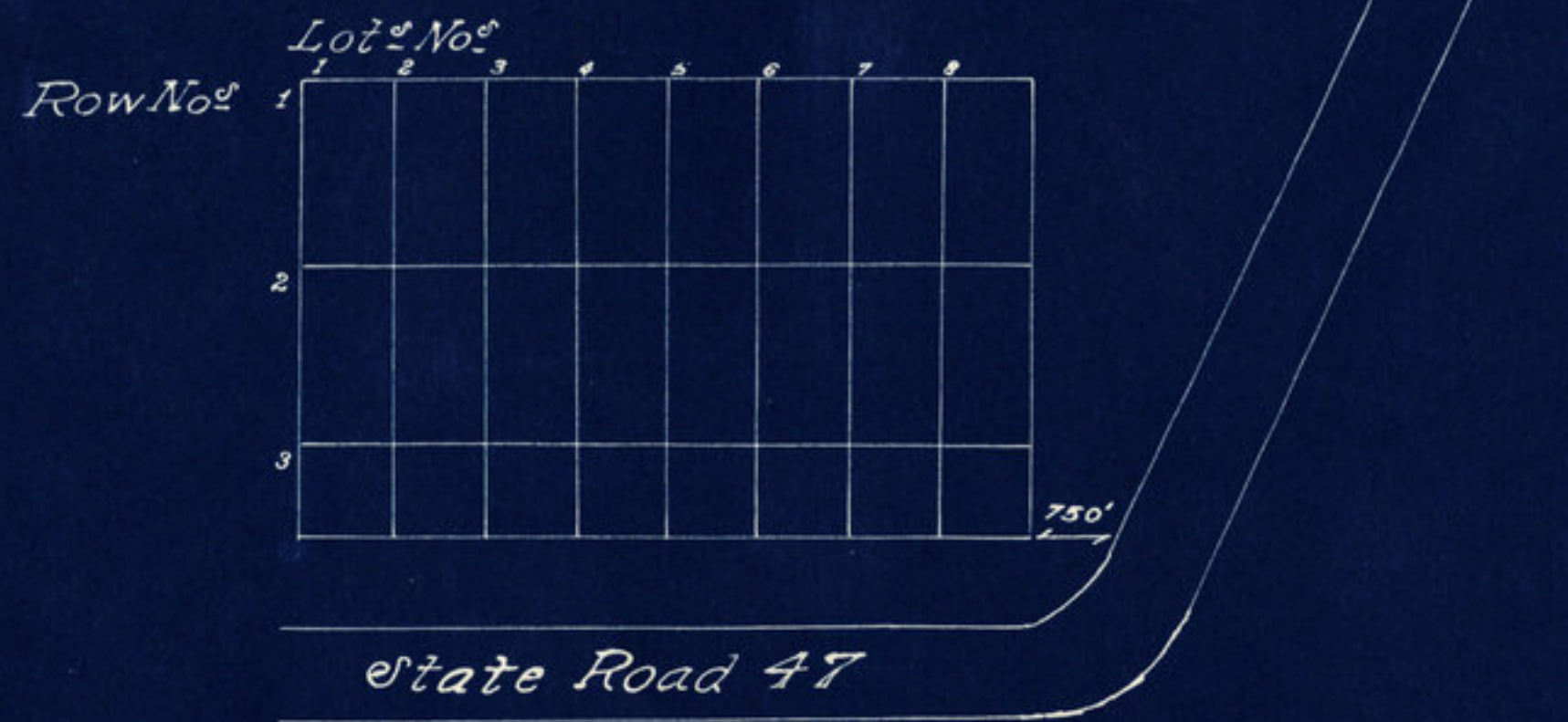
Methodist Church-house →

500'

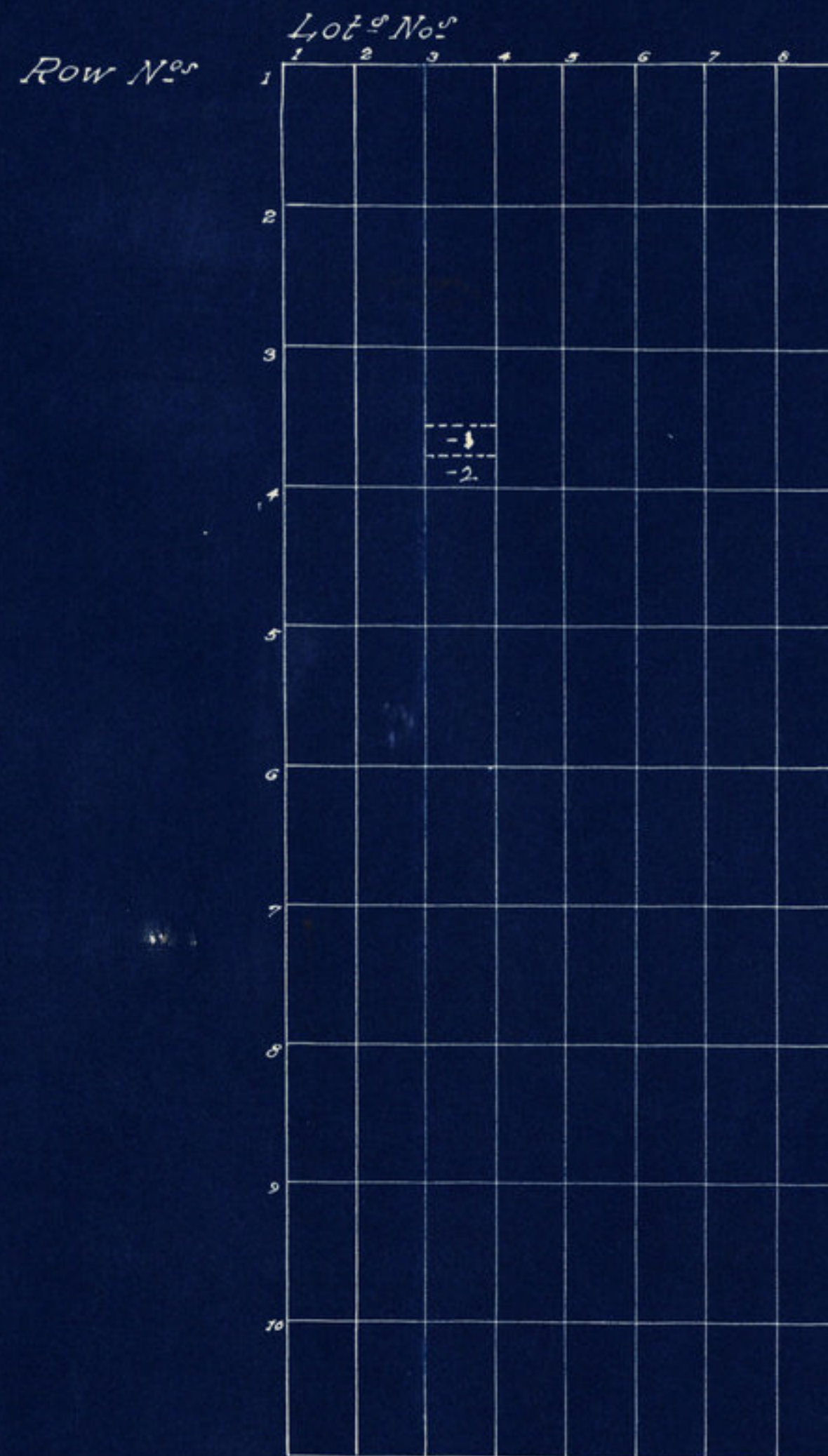
East School Street

Town of Waveland

Methodist Cemetery.
 Brown Twp, Montgomery County.
 Pt. S.W. 1/4, S.E. 1/4, Sec. 25, T. 17N, R. 6W.
 Scale 20'-1"
 Drawn 1940.



Lydick Cemetery.
Brown Twp. Montgomery County.
NE 1/4, Sect. 20, Twp. 17N., R. 5W.
Scale 20' = 1"
Drawn 1940.

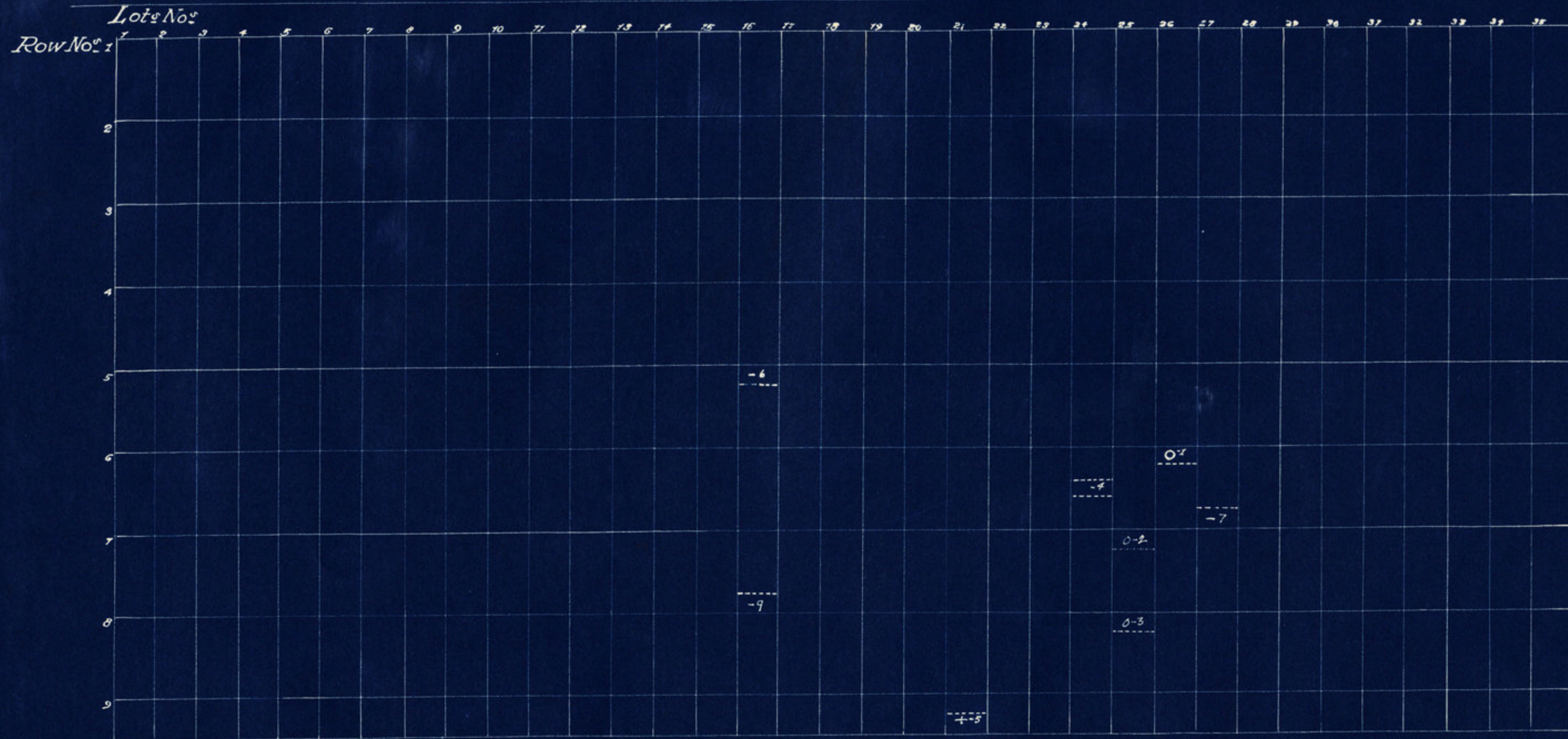


Moore Cemetery.
Brown Twp. Montgomery County.
NE 1/4, S.W. 1/4, Sec. 30, T. 17, R. 5.
Scale 20' = 1"
Drawn 1940.



State Road 234

7.5 miles to Ladoga →



Old Indian Creek Cemetery.
Brown Twp. Montgomery County.
NE 1/4, Sect. 13, Twp. 17N., R. 5W.
Scale 20" = 1"
Drawn 1940



Section 1.

Section 2.

290'

500'

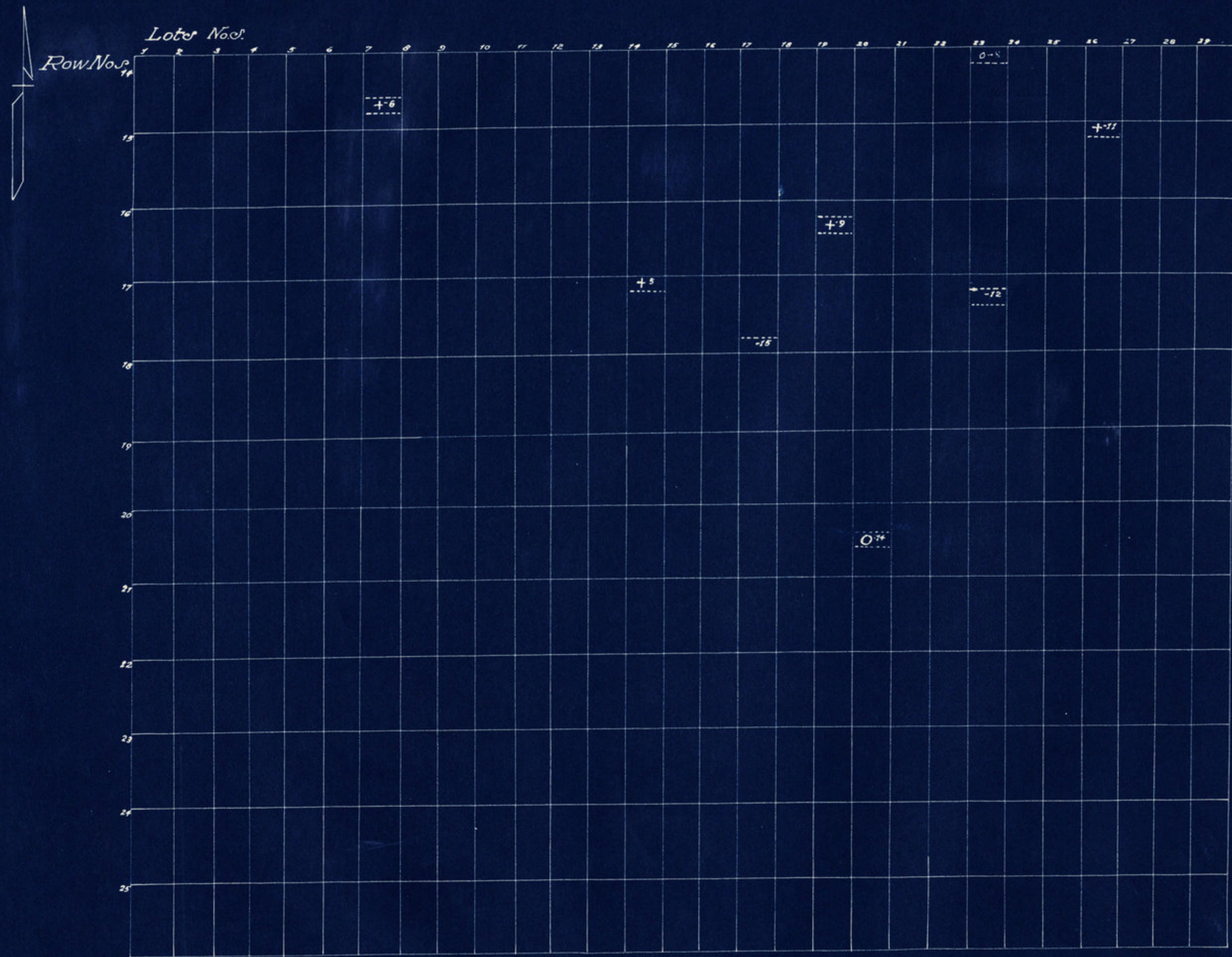
Oldshoe Lane 1/4 mi. to Cemetery

1 mi. to Oldshoe Lane

Black-top Road

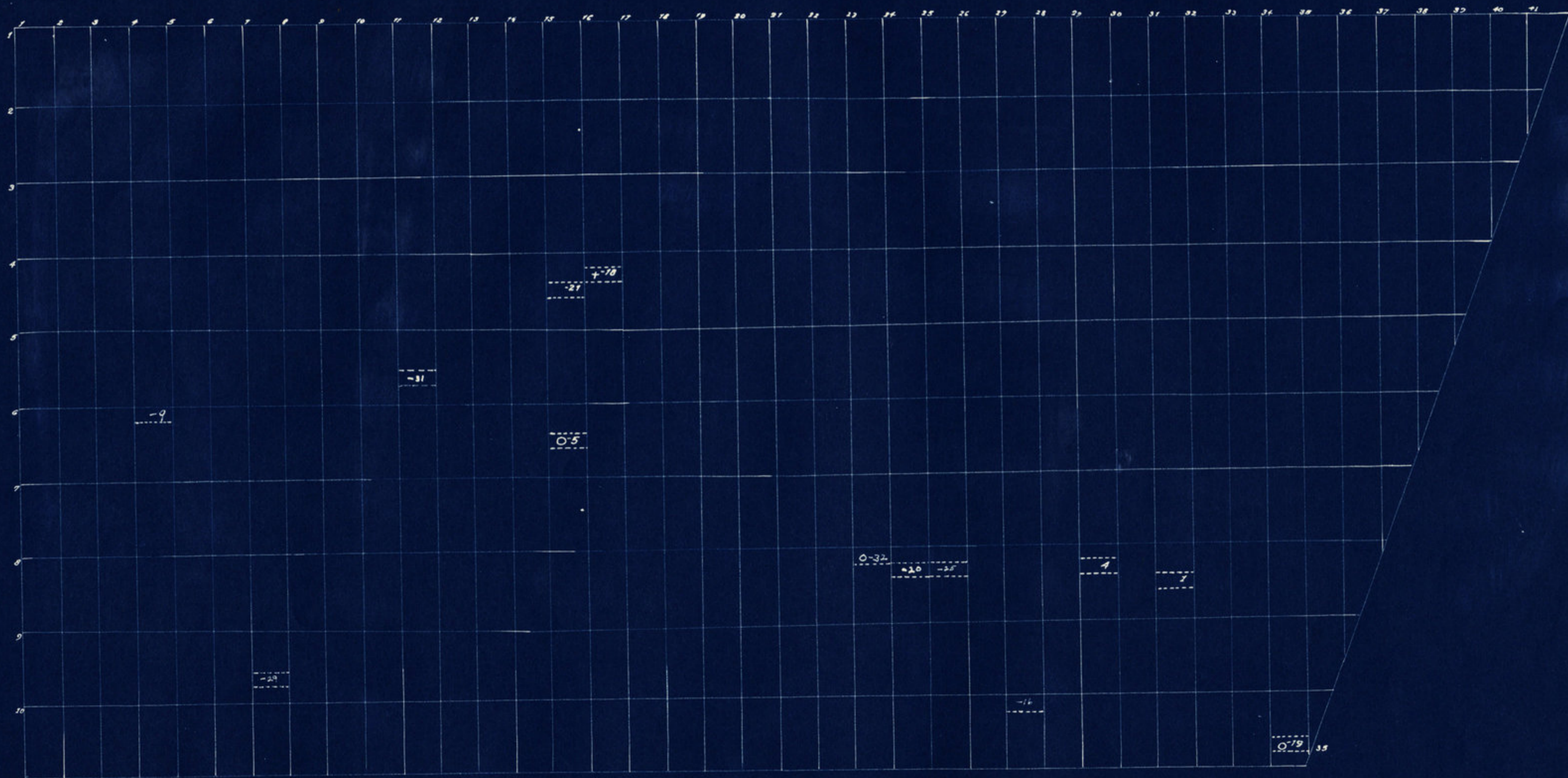
Waveland

Old Union Cemetery.
Brown Twp, Montgomery County.
S.E. 1/4, Sec. 24, Twp. 17N, R. 6W.
Scale 40' = 1" = 100'
Drawn 1940.
Sheet 1 of 3.



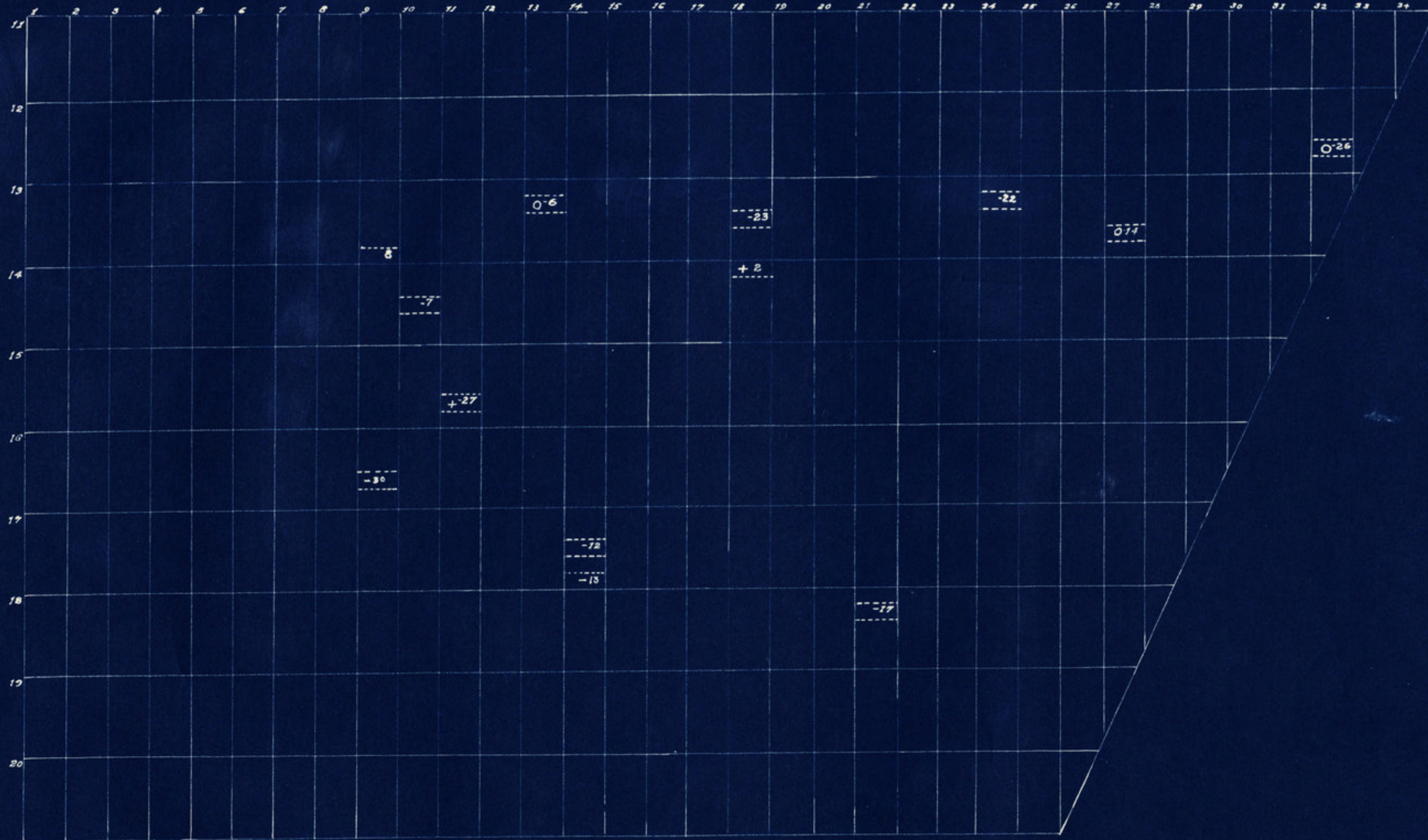
Old Union Cemetery.
 Section 2.
 Scale 20' = 1"
 Drawn 1940.
 Sheet 3 of 3.

N

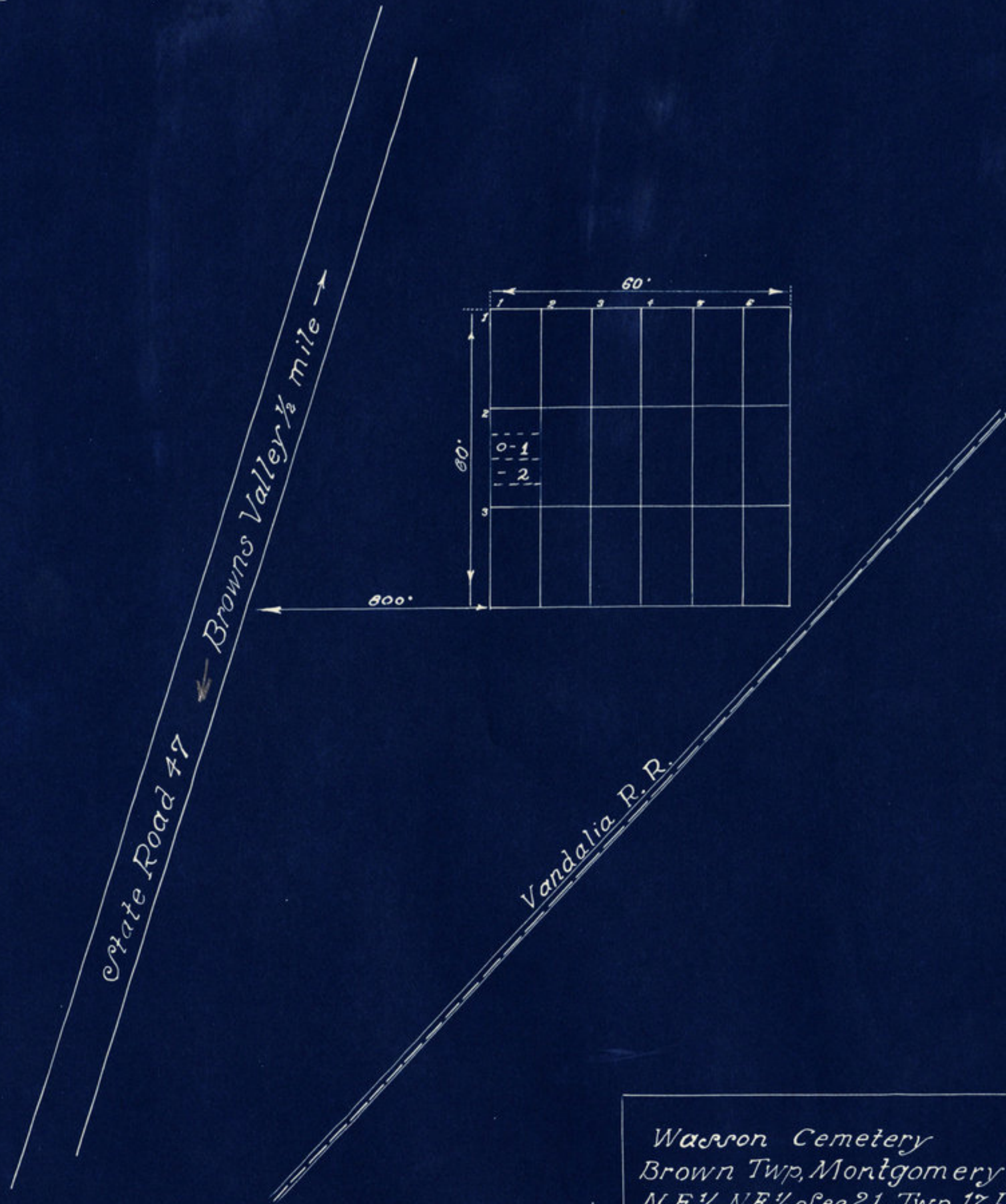


North half of
Indian Creek Hill Cemetery,
Brown Twp. Montgomery County
Scale 20'-1"
Drawn 1940.
Sheet 2 of 3.

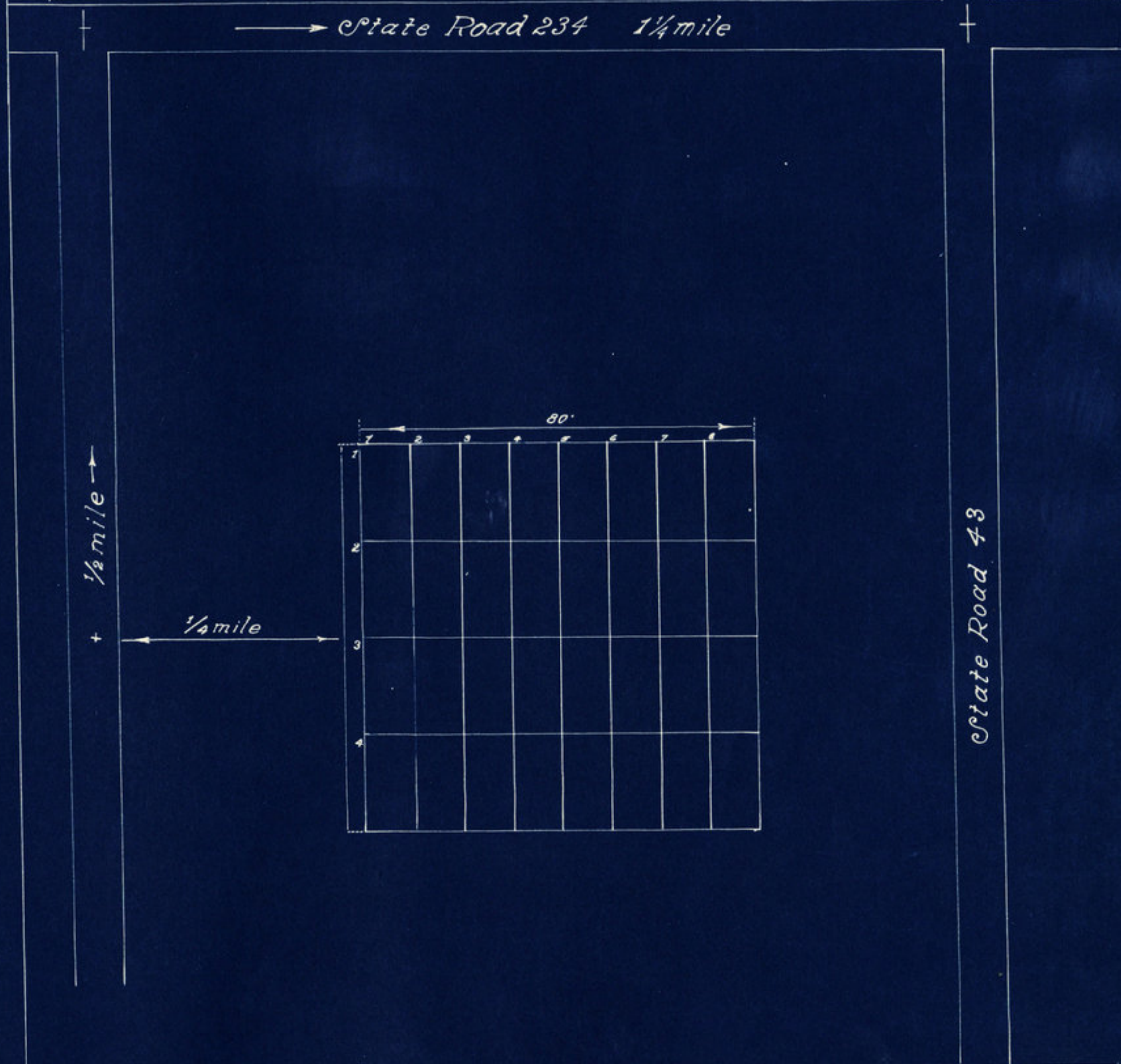
N



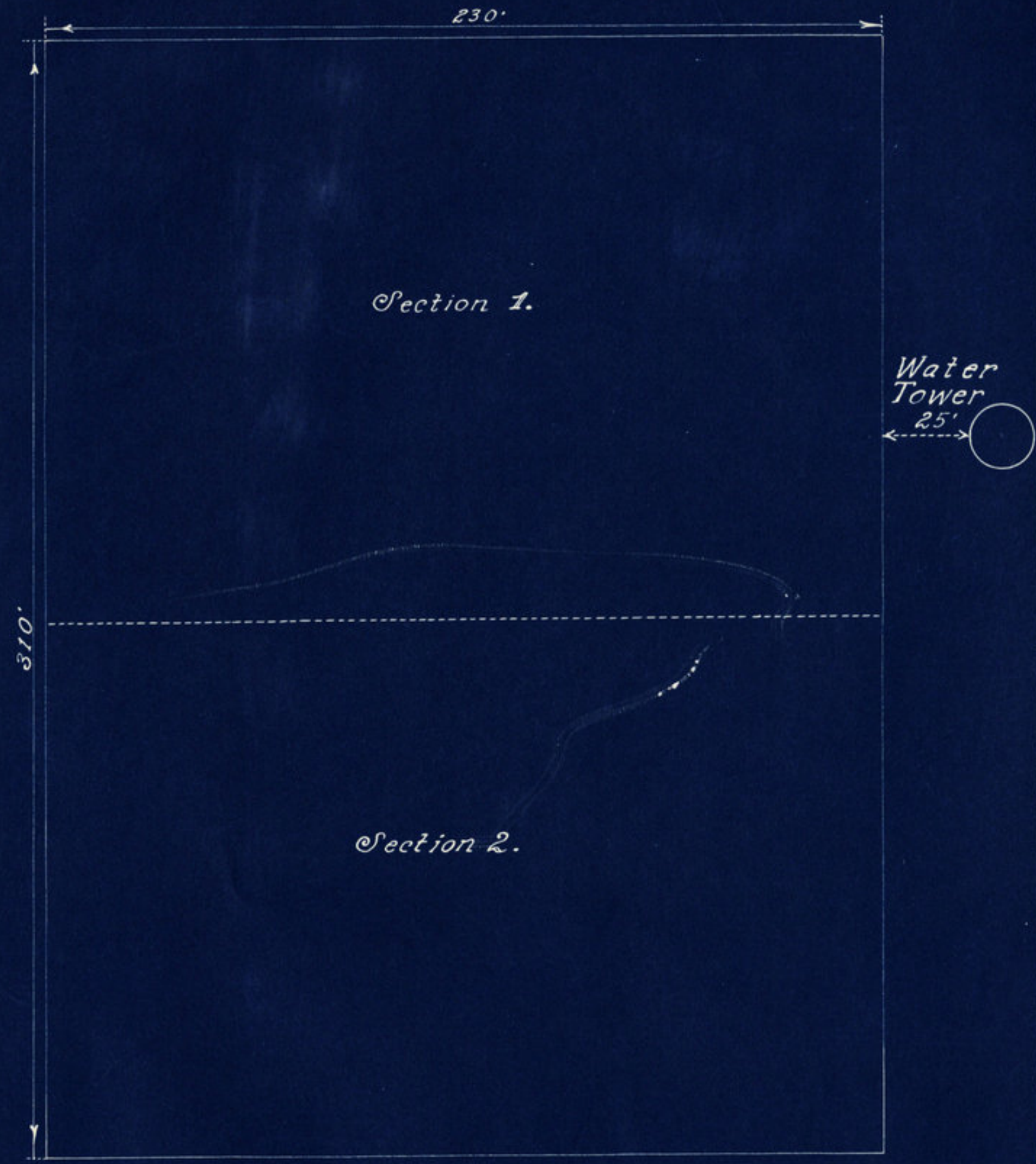
South half of
Indian Creek Hill Cemetery.
Brown Twp Montgomery County.
Scale 20'- 1"
Drawn 1940.
Sheet 3 of 3.



Warron Cemetery
 Brown Twp, Montgomery County
 N.E. 1/4, N.E. 1/4, Sec. 21, Twp. 17, R. 5W.
 Scale 20'-1"
 Drawn 1940.



Pottinger Cemetery
 Brown Twp, Montgomery County
 S.W. 1/4, N.W. 1/4, Sect. 18, Twp. 17, R. 5.
 Scale 20'-1"
 Drawn 1940.



West School Street

Waveland

West School Street

*Presbyterian Cemetery.
Brown Twp. Montgomery County.
S.W. 1/4, N.W. 1/4, Sec. 36, T. 17, R. 6.
Scale 30' = 1"
Drawn 1940.
Sheet 1 of 3.*



Row.	1	2	3	4	5	6	7	8	9	10	11	12	13	14	15	16	17	18	19	20	21	22	23	
1																							-7	
2																								
3										-76												0-17		
4										-1													-14	
5																	0-10					-10	-15	
6										+9	+2		0-11				0-20		0-13					
7													0-4										-18	
8																								0-12

Presbyterian Cemetery
Section 1.
Scale 20'-1"
Drawn 1940.
Sheet 2 of 3.

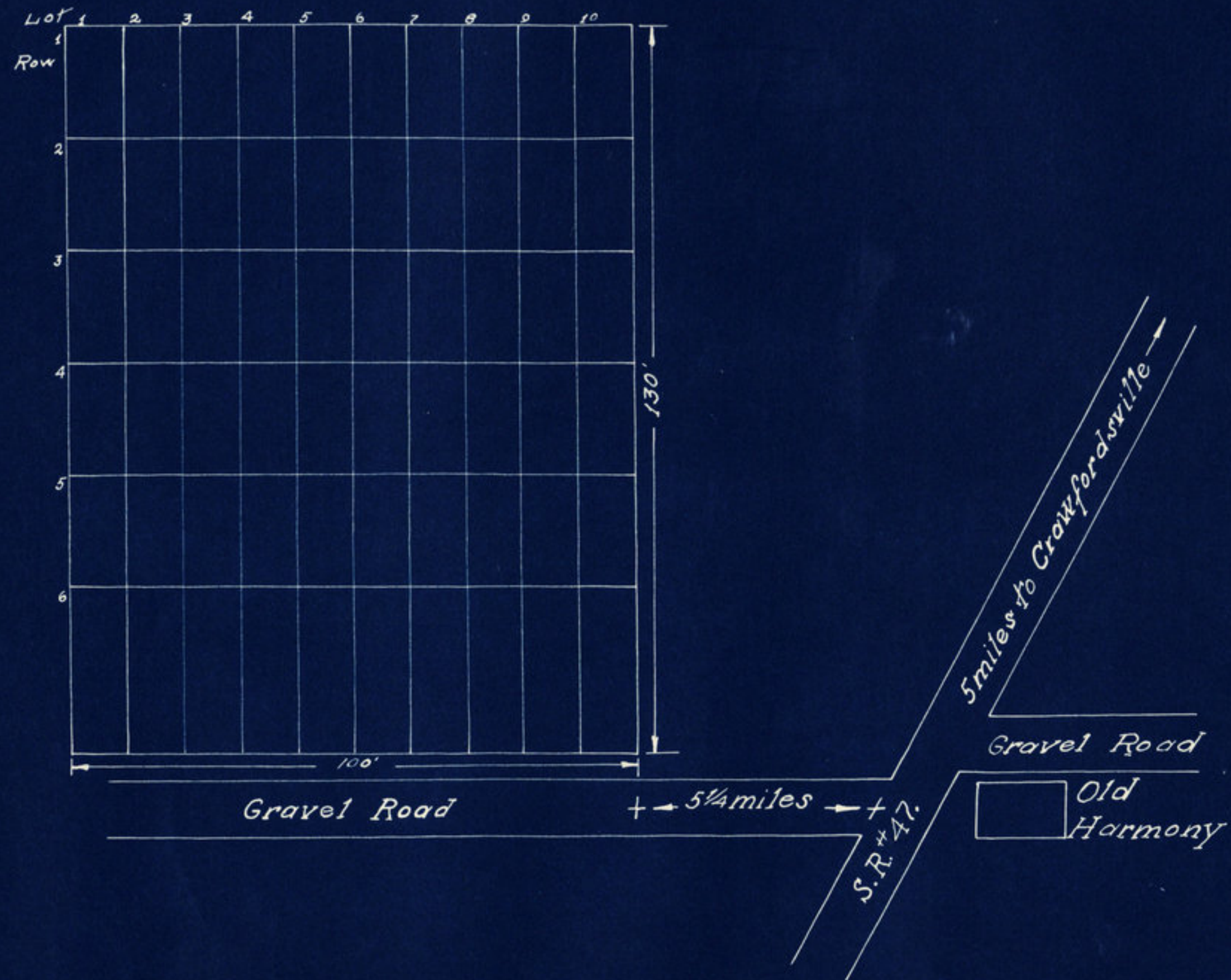


Row's No.

Lot's No.

	1	2	3	4	5	6	7	8	9	10	11	12	13	14	15	16	17	18	19	20	21	22	23	
9																								
10																								
11																								
12																								
13																								
14																								
15																								
16																								

Presbyterian Cemetery.
Section 2.
Scale 20' = 1"
Drawn 1940.
Sheet 3 of 3.



Rush Cemetery
Brown Twp, Montg. Co.
Pt. Se. 1/4, Sect. 22, Twp. 18, R. 5
Scale 20'-1"
Drawn 1940.

