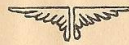


Boxcar To Nebraska



Mormon Baptism Certificate

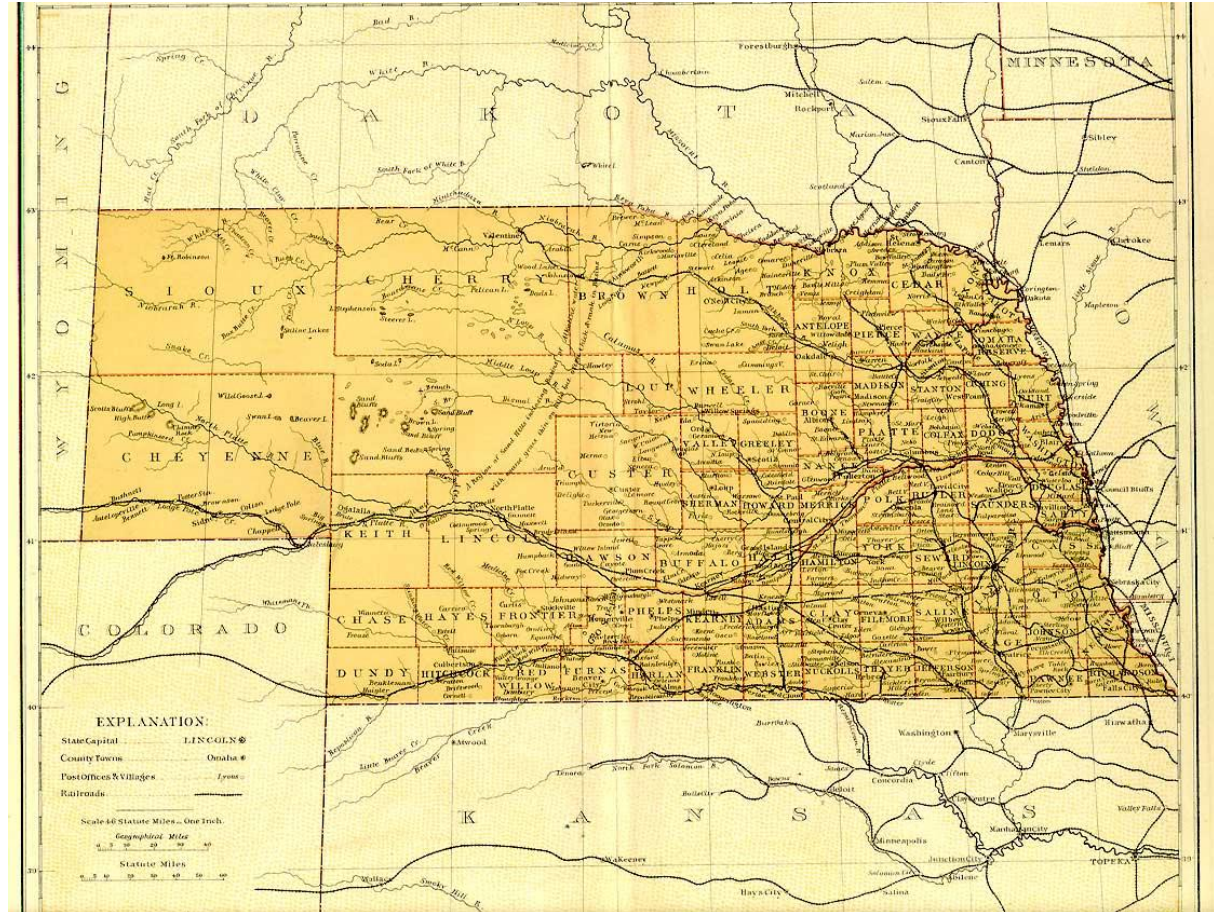
Certificate of Baptism



This is to certify that Augustus Belmont Simmer was
baptized October 14th 1904 by Elder H. L. Mulliner
and confirmed a member of the Church of Jesus Christ of
Latter-Day Saints October 14th 1904
by Elder H. A. McQuarrie at Crawfordsville, Ind.

H. A. McQuarrie Pres.
J. E. Manwaring Sec.

Railroad Map of Nebraska 1884

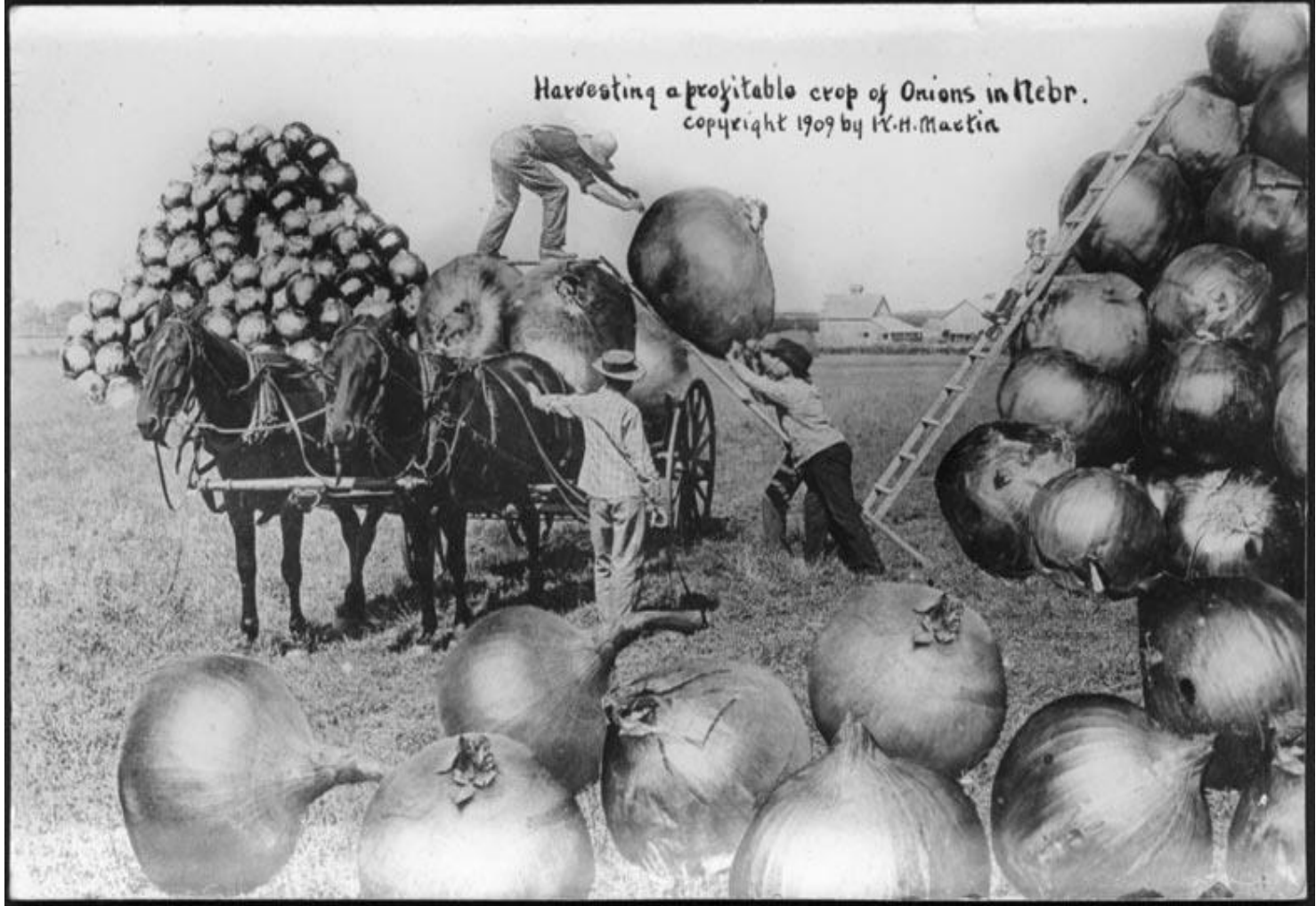


WE GROW'EM BIG IN NEBRASKA



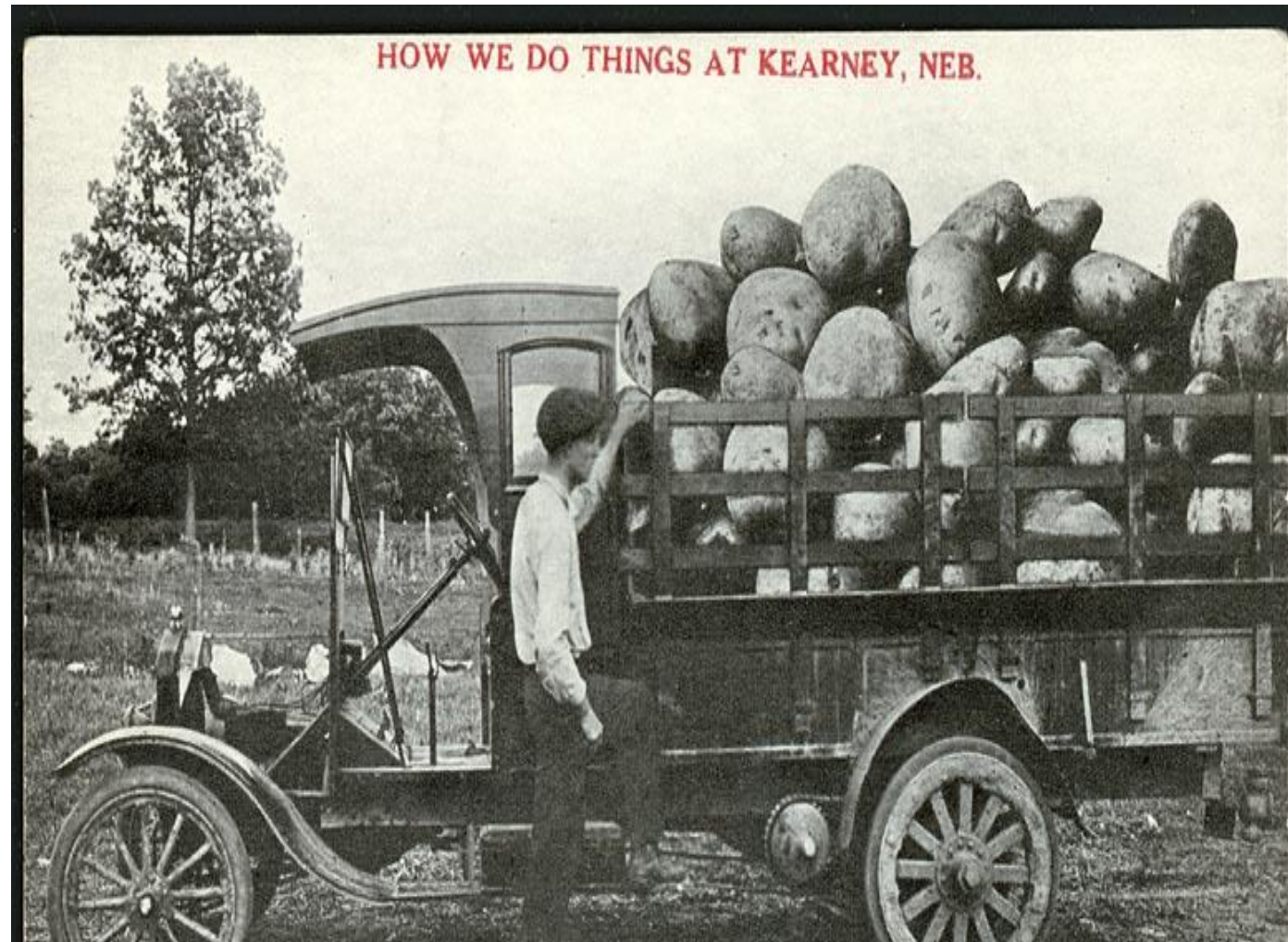
Copyrighted Photograph 1908
by W. H. Weston

Nebr. is the place we grow large cabbage

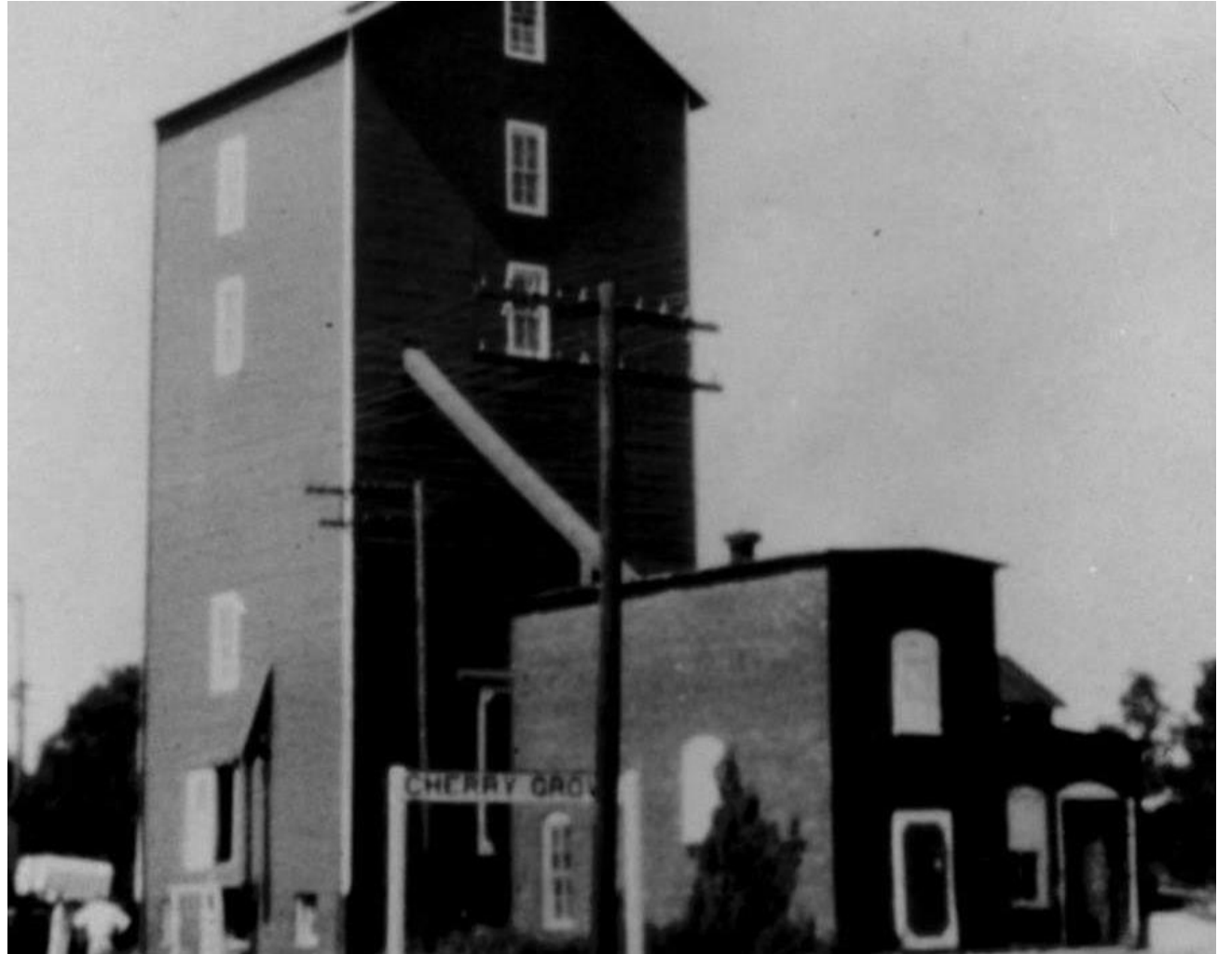


Harvesting a profitable crop of Onions in Nebr.
copyright 1909 by W.H. Martin

Growing potatoes in Nebraska

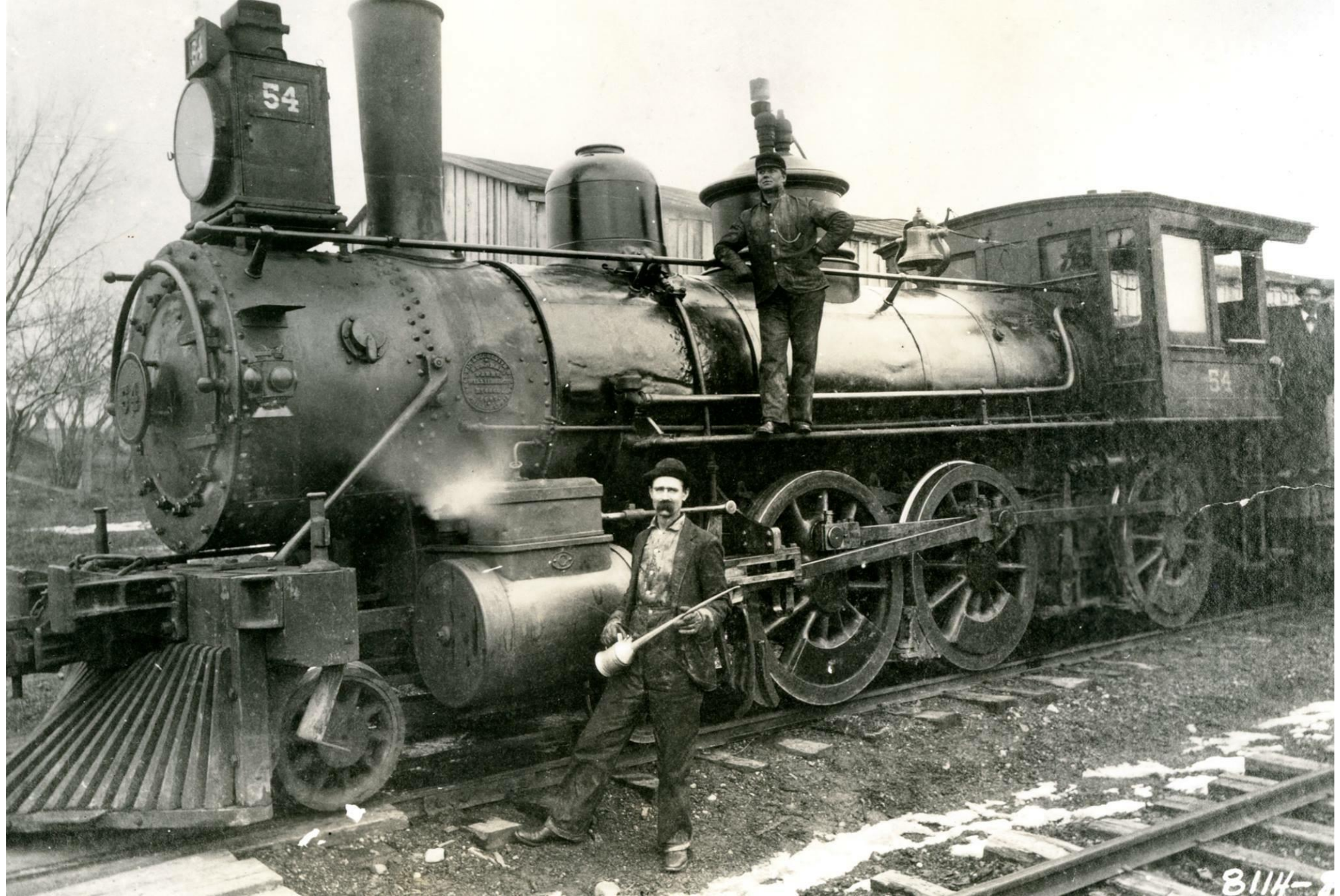


1900
Cherry Grove
Station /
Elevator
Montgomery
County, Indiana



Boxcar To Nebraska





8114-

Hartington
Nebraska
County
Seat
Cedar
County



Cedar County Courthouse



Locate HELP
Home of Cedar
County
Genealogy
&
Historical





**OPEN
SUNDAYS
2-4
WELCOME**

**CEDAR
COUNTY
MUSEUM**



Checking out the town and area

Town



Town



Investigate the Area



Very large areas



Located where I believe is
Homestead

Homestead Area



North to Missouri River



Small town along the way



Missouri River



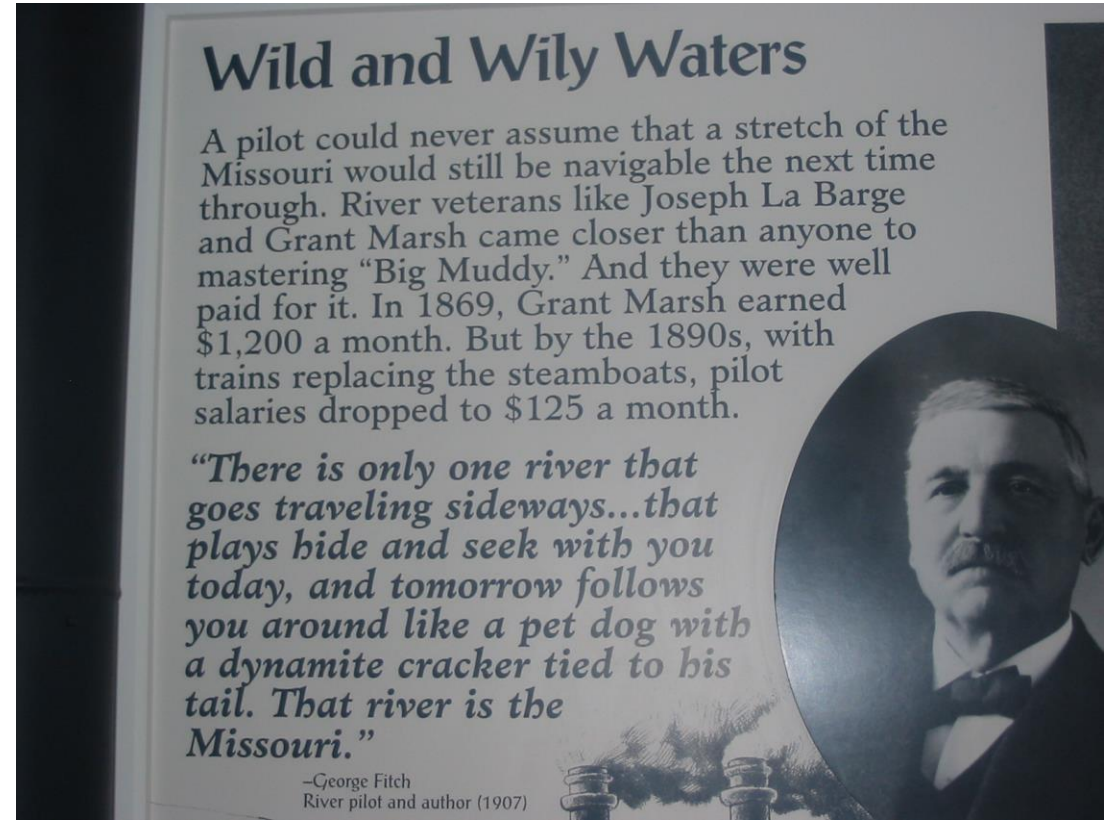
Area around the Missouri River



Lewis & Clark Visitor Center



Museum in Visitors Center



Information in the Museum about the road

